



**INDOOR LETHBRIDGE MACHINERY & EQUIPMENT
CONSIGNMENT SALE**

PBAM Auction Market

December 6 11:00AM to 5:00PM



#4339L Log Splitter/Battery Charger

Description	Electric log splitter, battery charger
-------------	--



#4339N Minn Kota Trolling Motor

Description	Minn Kota Trolling Motor
-------------	--------------------------



#4339I Drill Press/Vise

Description	KTF 12 speed drill press, vise on stand
-------------	---



#4339G DeWalt Saw/Acetylene Torch/Cart

Description	DeWalt Saw, Acetylene Torch, Cart
-------------	-----------------------------------



#4339H 235/45R18 Tires

Quantity	6.00
----------	------



#4339F Kenway Saddle and Tack

Description	15 inch Kenway Saddle, breast collar, cinch, halters, reins, ropes
-------------	--



#4339C Air Compressor/Sandblaster

Description	Powermate 20 gallon air compressor, power fist 10 gallon pressure sandblaster
-------------	---



#4339B Antique Tires/Rims/RV Ladder

Description	30x3 1/2 antique tires and rims, RV Ladder, trimmers
-------------	--



#4339A John Deere Wagon



#4339D Lincoln Electric Mig Welder/Mig Welder Tool Box

Description	Lincoln Electric SP 170 T Mig welder, mig welder rolling tool box
-------------	---



#4334B Fencing Supplies/Fittings

Description	Barbed wire, high tensile wire, elec fence supplies, elec fencer, fittings
-------------	--



#4334A Bolts/Nuts



#4334C 22 Containers Nuts/Bolts



#4334D Tarps/Clevis'/Parts



#4334E PTO Shafts/Ext Cords/Parts



#4334F Creeper/Shop Supplies/Parts

Description	PTO Shafts, ext cords, target, parts, shop supplies, fire extinguishers
-------------	---



#4334G Gas Engines/Bolt Organizers



#4334H Shovels/Irrigation Fittings/Trimmer

Description

Shovels, Pitch forks, hedge trimmers, irrigation valves, tools, grinding masks



#4334i Chains/Boomers/Jacks



#4334J Pallet of Assorted Tools

Description

Assorted tools, shop supplies



#4334K Jerry Cans, Jack, Mirrors

Description	Pallet Jerry Cans, tools, pumps, mirrors
-------------	--



#3715H Hockey Nets

Description	3 hockey nets
-------------	---------------



#4316A Ford Tires/Rims

Description	4 - 235/50R18 tires and 5 bolt Ford rims
-------------	--



#4332A Canvas Shed

Description	10ft x 20ft x 8ft high canvas shed, 6.5ft zip up door
-------------	---



#3715P Hog Feeder/Salt Tub/Barrel



#3715M Bolt on Hay Spikes

Description	2 x Bolt on spikes for hay fork
-------------	---------------------------------



#3715Q Slip Tank/Tool Box

Description	Appx 30 gallon slip tank and plastic truck tool box
-------------	---



#3715O Fence Posts/T Posts

Description	Appx 40 wood fence posts various sizes 2 inch - 6 inch, appx 8 steel T posts
-------------	--



#3703A Combine Fuel Tank

Description	Fits case 7120-8180 combines
-------------	------------------------------



#4323B Kitchen Hood



#4323A Kitchen Hood



#4323Q Stainless Steel Table



#4323E Chairs

Description	Appx 24 chairs
-------------	----------------



#4323M Tables

Quantity	6.00
----------	------



#4323L Tables

Quantity	4.00
----------	------



#4323K Tables

Quantity	7.00
----------	------

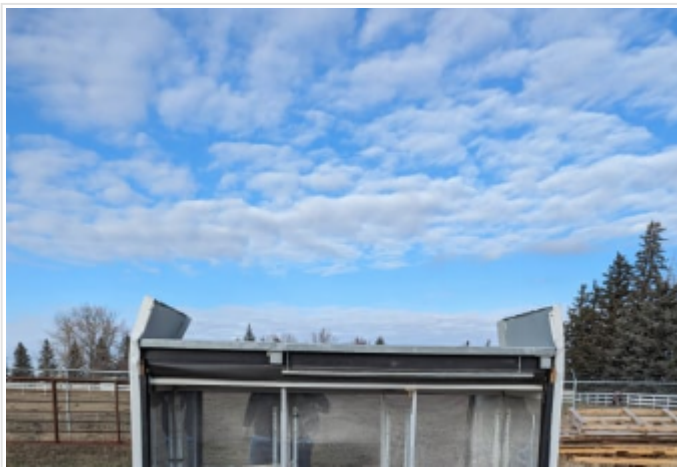


#4323J Tables

Quantity	3.00
----------	------



#4323R Coca Cola Cooler



#4323P Sliding Door Cooler



#4323C Double Sided 12 Door Cooler



#4322B Steel Pipe

Description	Bundle of steel pipe 1 1/2, appx 20ft long various lengths, appx 7 pipe in bundle
-------------	---



#4322A Galvanized Pipe

Description	Galvanized steel pipe, 1 1/2 appx 12 in the bundle, appx 24ft long various lengths
-------------	--



#3713A 3 inch Pipe

Description	2 - 3 inch steel pipe, 1x19 ft 1x20ft
-------------	---------------------------------------



#4333A Service Box

Description	Service box off a 2005 GMC 3500
-------------	---------------------------------



#4321 A,B,C Incinerators

Description	Steel incinerators 3 sizes, lift hooks, drop pan for cleaning
-------------	---



#4321D Fire Pits

Quantity	3.00
----------	------



#3715J Frost & Wood Sickle Mower



#3715G Cart



#3715D Grain Grinder



#3715R 3 PTH Rototiller

Description	4ft 3 PTH Rototiller 540 pto
-------------	------------------------------



#3715C 7ft 3 PTH Disc

Description	7ft 3 PTH Disc, front notch pans
-------------	----------------------------------



#3715E 3pth Box Scraper/ Ripper

Description	5ft 3 PTH box scraper/ ripper
-------------	-------------------------------



#4318A 5 Inch Mainline Pipe/Fittings

Description	Approx 14 pipe, 5 inch mainline, 4 inch valves/taps, various lengths, reducer, t fitting, and end plugs
-------------	---



#3715L Assorted Irrigation Fittings

Description	5 inch, 6 inch and 7 inch irrigation fittings , valves
-------------	--



#3715S Assorted Irrigation Fittings/Hose

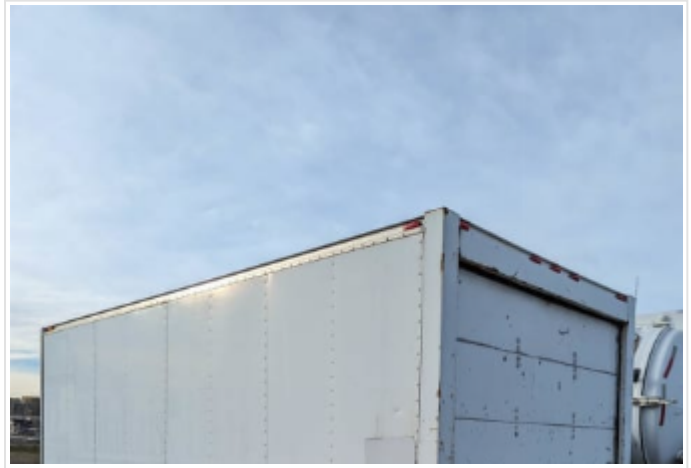
Description	2 inch, 3 inch, and 4 inch irrigation fittings, Cam lock hose
-------------	---



#3715A Pipe Trailer



#3715B Pipe Trailer



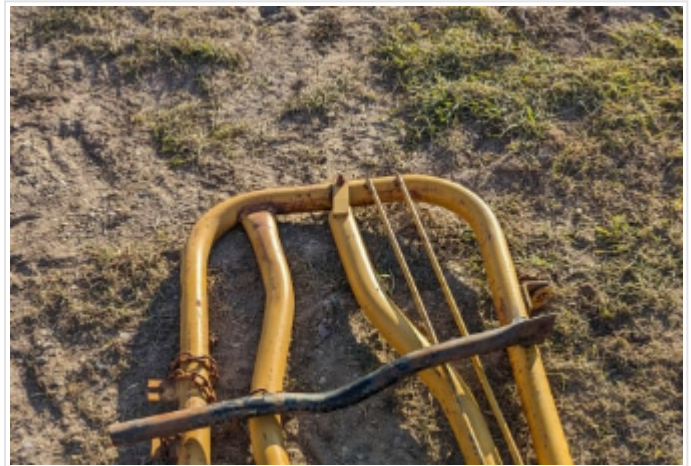
#4337A 16ft Van Body

Description	1996 16ft Van Body, Rear roll up door, Wooden floor, was taken off 1996 chev cutaway
-------------	--



#3715K Calf Warmer

Description	Calf warmer with heater
-------------	-------------------------



#3715F Head Gate



#3715i 8ft Gate

Description	1x8ft sorting gate, 1x2ft home built gate
-------------	---



#3714M 10ft Hi Hog Panel

Description	10ft used hi hog panel missing leg
-------------	------------------------------------



#3714A 10ft Gates

Description	2 - 10ft used medium duty gates
-------------	---------------------------------



#3714B 7ft Gate

Description	7ft HD used gate
-------------	------------------



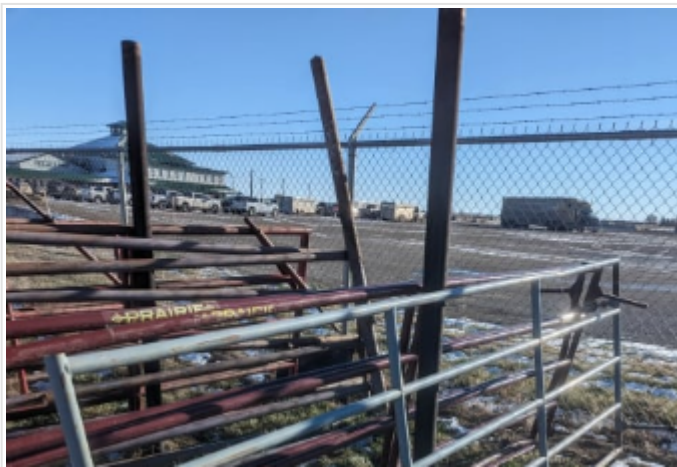
#3714C 9ft Gates

Description	2 - HD used 9 ft gates
-------------	------------------------



#3714E 12 Ft Prairie Gates

Description	2 - 12ft used prairie gates
-------------	-----------------------------



#3714F 12 ft 2W Gate

Description	12ft used 2W Gate
-------------	-------------------



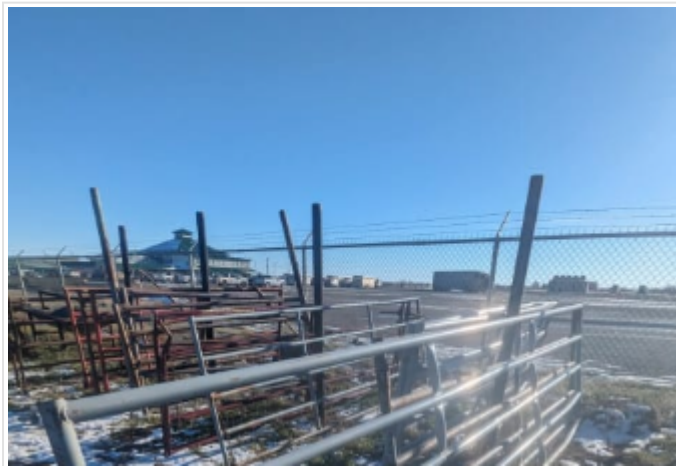
#3714G 10ft 2W Gates

Description	2 - 2W HD used 10ft gates
-------------	---------------------------



#3714H 12ft HD 2W Gate

Description	12ft HD used 2W gate
-------------	----------------------



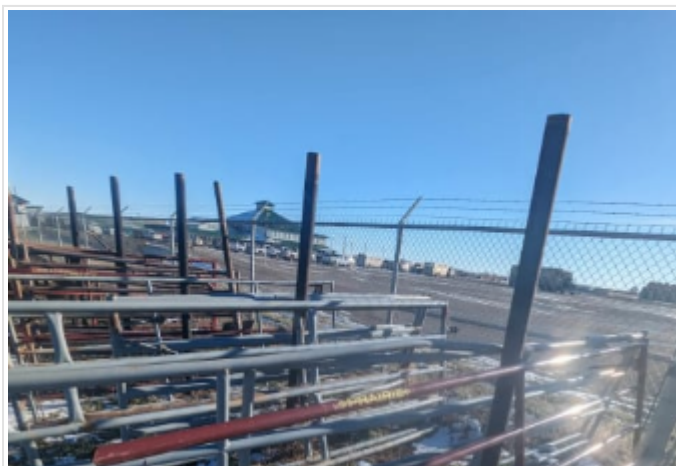
#3714I 16ft 2W Gate

Description	16ft HD used 2W gate
-------------	----------------------



#3714J 16ft 2W Gates

Description	2- 16ft used 2W gates
-------------	-----------------------



#3714K 14ft Prairie Gate

Description	14ft used prairie gate
-------------	------------------------



#3714L 16ft Prairie Gate

Description	16ft used prairie gate
-------------	------------------------



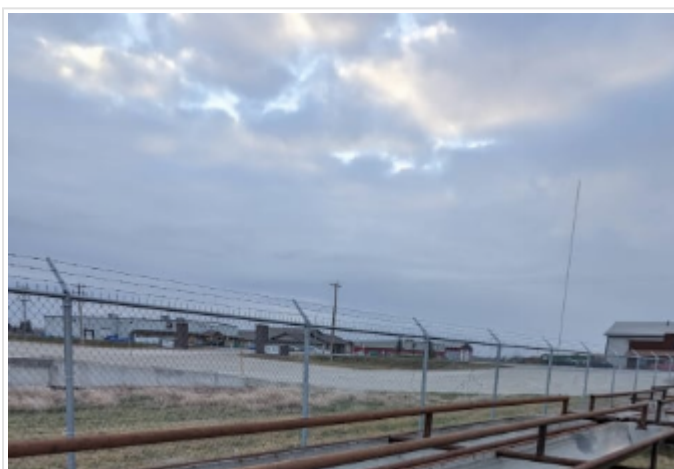
#3716A 10ft Panels

Quantity	10.00
Description	10ft used panels



#3716B 12ft panels

Quantity	2.00
Description	12 ft used panels



#4326B 30ft Banded Bunk Feeders

Description	30ft banded bunk feeders, lift bars, 2 7/8 construction
-------------	---



#4319A 20ft Belted Bunk Feeders

Quantity	4.00
Description	20ft belted bunk feeders, 2 7/8 pipe, lift bars



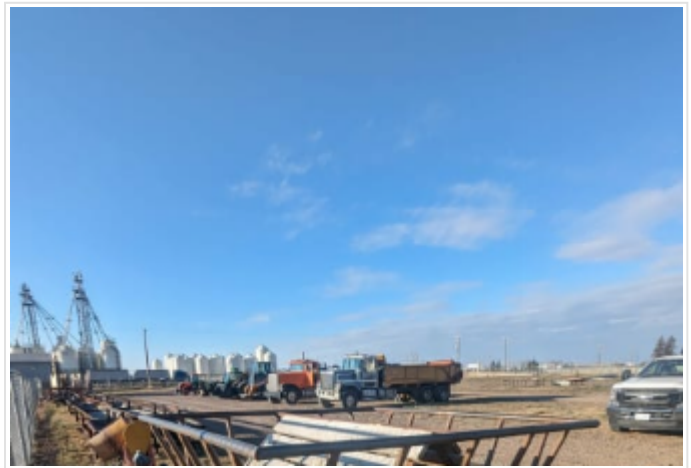
#4319B 10ft Bunk Feeders

Quantity	2.00
Description	10ft belted bunk feeders, 2 7/8 pipe construction, lift bars



#4326A 10ft Bunk Feeders

Description	10ft belted bunk feeders, lift bars, 2 7/8 construction
-------------	---



#4326D Single Square Bale Feeder



#4326C Triple Bale Feeder



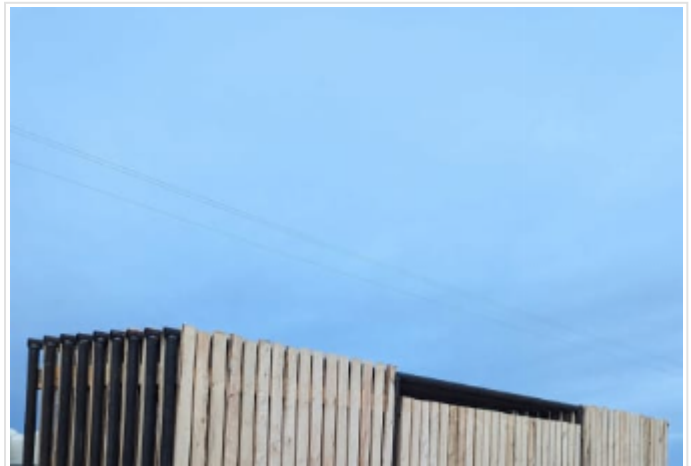
#4336F 24ft Freestanding Panels

Quantity	12.00
Description	24ft free standing panels, 2 3/8 pipe construction, 4 uprights, 3/4 rods



#4336G 24ft Freestanding Panels W/ 15ft Gates

Quantity	3.00
Description	24ft free standing panels w/15ft gate, 2 3/8 pipe construction, 1 inch rods, 4 uprights



#4336E Windbreaks

Description	24 ft wind break panels, lift bars
-------------	------------------------------------



#4326E Windbreaks

Quantity	4.00
Description	24ft windbreak panels, lift bars, 1x6 windboards



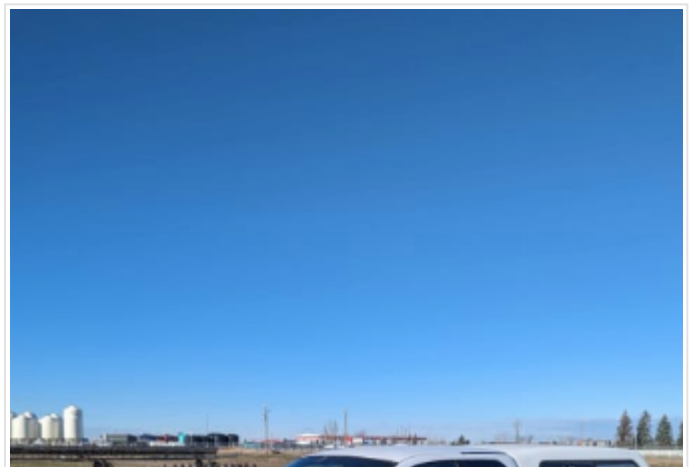
#4327A Flexicoil System 65 Sprayer

Description	Flexicoil System 65 Sprayer, 100 ft, pull type, wind screens, 1000 gallon tank
-------------	--



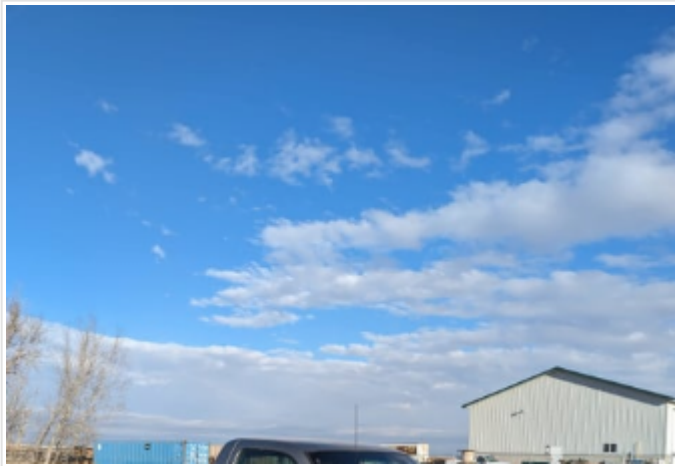
#4317A International 544

Description	1970 International Farmall 544 TC, 4 cyl gas engine, Open station, 5 speed transmission with torque amplifier, 8804 hrs showing, 540 PTO, 3 PTH, 2 scv Hyd, Pioneer conversion, 13.6-38 rear tires, 11.00-15sl front tires, w/2350 FEL smooth edge bucket. VIN:2300474U015265
-------------	---



#4324A Dodge Dakota SLT

Description	1998 Dodge Dakota SLT, 5.2L V8 Gas engine, Auto transmission, 322662 kms, 4x4, power seats, power windows, power locks, 235/75/R15, VIN:1B7GG22Y2WS632438
-------------	---



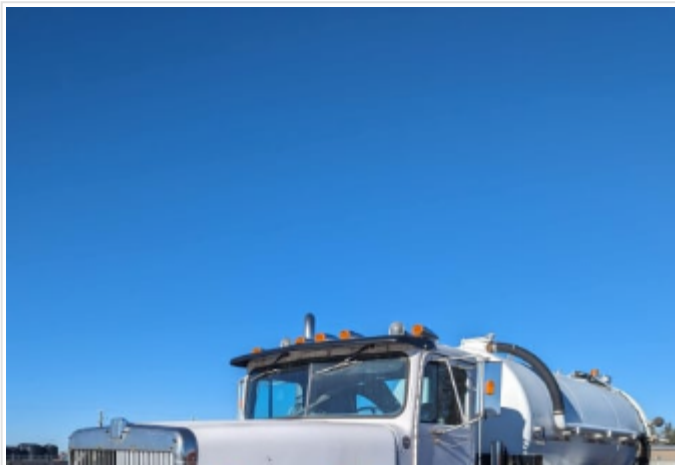
#4324B GMC 1500 SL

Description	2000 GMC 1500 SL Pick up, 4.8L gas engine, auto transmission, 253679 kms, 2 wd, 255/70R16 tires, VIN:1GTEC14V6YE341393
-------------	--



#4335A Ford F350

Description	2021 Ford F350 XL, 49567 kms, 6.2L Gas V8 engine, 10 speed automatic transmission, Reg cab, Long box, Gooseneck fifth wheel hitch, 265/70/R17 tires, VIN:1FTRFJB62MEE15967
-------------	--



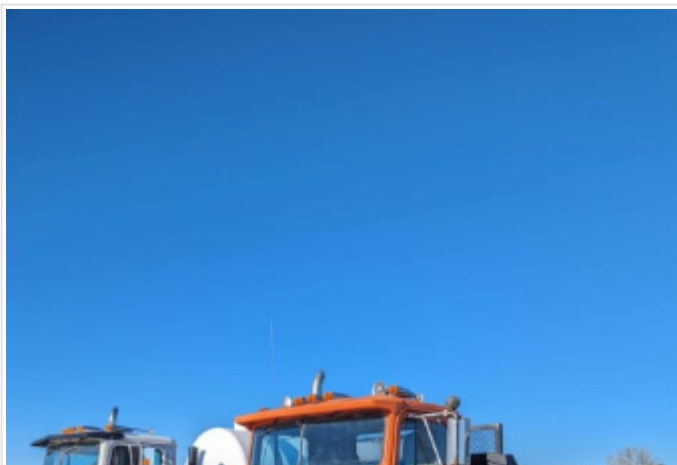
#4331A International 9300

Description	1992 International 9300 Tandem Vac Truck, 8 speed transmission, Cat 3406B (seized) diesel engine, vac pump, exterior controls, 11R22.5 tires, VIN:2HSFELUR4NC056262
-------------	---



#4328A GMC General Tandem

Description	1979 GMC General Tandem, Detroit diesel engine, 10 speed transmission, 387540 kms showing, 18ft Knight 650 Manure spreader box, double beaters, 10-20 tires, VIN:T49EJ9V618705
-------------	--



#4330A International Tandem

Description	1988 IH 9340 Tandem, Cummins diesel engine, 18 speed transmission, 294584 kms showing, 18ft steel box and hoist, 11R22.5 tires, VIN:2HSFBADR4JC017954
-------------	---



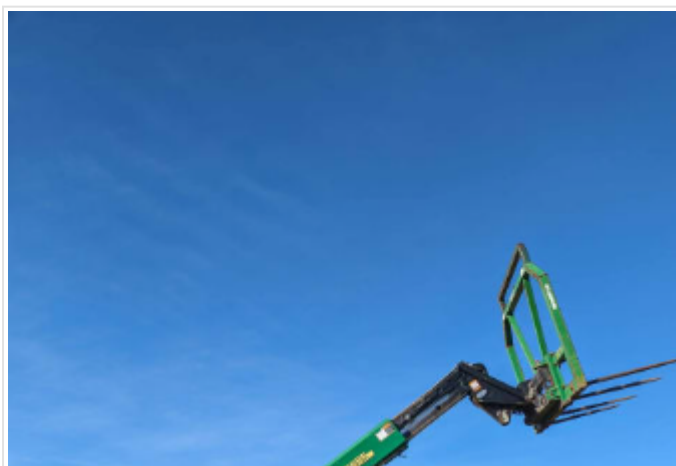
#4214A 2018 Case TV380

Description	4214A - 2018 Case TV 380 Skid steer, Diesel engine, 2054 hrs, CAHR, H Pattern or ISO control, Quick attach, Auxiliary Hydraulics, Two speed transmission, Beacon, New Tracks, New Drive gears, Smooth edge bucket, SER:NHM439266
-------------	--



#4315A John Deere TC 54H

Description	2003 John Deere TC 54H Loader, 26732 hrs, CAHR, Quick attach, 20.5-25 tires, in the last 500 hrs unit has new center pins and bushings, steer bushings, ac compressor receiver drier lines, injectors, radiator, rebuild hydraulic rad, SER:DWTC54H589953
-------------	---



#4315B John Deere 3400

Description	2004 John Deere 3400 Telehandler, Diesel engine, shuttle shift, 4x4, 14367 hrs, 460/70R24 tires, 6600 lb lift capacity, 23ft max height, In the last 1000 hrs new radiator, hydraulic pump, water pump, alternator, heater hoses, comes with bale fork and grapple bucket, VIN:Z03400X204258
-------------	--

Visit perlich.com often, as items will be added as they arrive for the Sale!



[403-329-3101](tel:403-329-3101)

www.perlich.com