



ESTATE OF ALLAN SKRETTING AUCTION SALE

March 18 10:00AM to 5:00PM



#1001 Mi-T-M 3005

Description	Mi-T-M Cooperation 3005 Pressure Washer, 12.4 hrs, Heat, Soap, Guest Consignor
-------------	--



#1002 Yamaha Kodiak 450 Quad

Description	Yamaha Kodiak 450, 4x4, Odometer reading at time of listing 20,106km
-------------	--



#1003 Yamaha Kodiak Quad

Kind	Recreational Equipment
Description	Yamaha Kodiak Quad for Parts



#1004 Bale Fork

Description	2 Spear Bale Fork
-------------	-------------------



#1005 Bale Fork

Description	4 Spear Bale Fork
-------------	-------------------



#1006 Kirchner Bale Fork

Description	Kirchner Bale Fork, Guest Consignor
-------------	-------------------------------------



#1007 Hay Rake

Description	2 Wheel Hay Rake
-------------	------------------



#1008 Slip Tank on Trailer

Kind	Miscellaneous Equipment & Supplies
Description	Double Tank Slip Tank on International Truck Box Trailer, Carried Dyed Diesel, Fill-Rite Pump, 20GPM, 12 Volt DC Pump,



#1009 Diker



#1010 8 Inch Mainline

Description	8 inch mainline, 4 inch valves, clamp type, 20 Pieces With Valves, 20 Pieces Without Valves
-------------	---



#1011 8in Mainline

Kind	Irrigation Equipment
Description	8 inch mainline, 4 inch valves, clamp type, 22 Pieces With Valves, 22 Pieces Without Valves



#1012 8in Irrigation Pipe

Description	8in Mainline, 42 pieces, 22 pieces with 4in valves, 20 pieces without valves
-------------	--



#1013 Irrigation Intake

Kind	Irrigation Equipment
------	----------------------



#1014 International UV 549

Description	International UV 549 pumping unit, engine and cart no pump
-------------	--



#1015 International UV 549

Description	International UV 549 Pumping unit, Berkley B6J Pump
-------------	---



#1016 Duetz Pumping Unit

Description	Deutz pumping unit, Cornell pump, on cart
-------------	---



#1017 Chevrolet Pumping Unit

Description	Chevrolet 6cyl Pumping unit, Berkley B4J Pump, Guest Consignor
-------------	--



#1018 Pipe Trailer

Kind	Irrigation Equipment
------	----------------------



#1019 Renn Swather

Description	Renn pull type swather, 540 pto
-------------	---------------------------------



#1020 Bergen Auger

Description	10 inch Bergen Auger, 540 pto
-------------	-------------------------------



#1021 Brandt L 740

Description	Brandt L-740 Auger, Kohler gas engine, 7 inch
-------------	---



#1022 Brandt Auger

Description	Brandt Auger, 6 inch, Kawasaki gas engine
-------------	---



#1024 Tank on Cart

Kind	Miscellaneous Equipment & Supplies
Description	Westeel Rosco 500 Gallon Tank



#1025 Versatile Sprayer Tank/Cart



#1026 Versatile Sprayer

Description	Versatile 40ft pull type sprayer, 500 gallon tank
-------------	---



#1027 Versatile Sprayer

Description	Versatile 40ft pull type sprayer, 450 gallon tank
-------------	---



#1028 Valmar 240

Description	Valmar 240, 40ft
-------------	------------------



#1029 Rainbow Float

Description	Rainbow Float, 12ft, hyd lift
-------------	-------------------------------



#1030 Bourgault 850

Description	Bourgault 850 Centurion III Sprayer, 100ft, 1000 Gallon, Pull type, Guest Consignor
-------------	---



#1031 Harrow Bar

Description	28ft diamond harrow bar
-------------	-------------------------



#1032 Harrow Bar with Coil Packers

Kind	Agriculture Seeding & Tillage
Description	Diamond Harrows with 3 Coil Packers



#1033 Victory Blade

Description	38ft Victory Blade, double wing, hyd lift
-------------	---



#1034 Case Chisel Plow

Description	Case 18ft chisel plow, hyd lift, pull type, double wing
-------------	---



#1035 Chisel Plow

Description	20ft chisel plow, double wing, hyd lift, pull type, w/diamond harrow bar and p30 coil packers
-------------	---



#1036 John Deere Vibrashank

Description	John Deere 16ft Vibrashank cultivator, hyd lift, pull type, double spring
-------------	---



#1037 John Deere Vibrashank

Description	John Deere 30ft Vibrashank cultivator, p20 packer bar, double wing
-------------	--



#1038 John Deere Tandem Disc

Description	John Deere 230 Tandem Disc, 24ft, hyd lift,
-------------	---



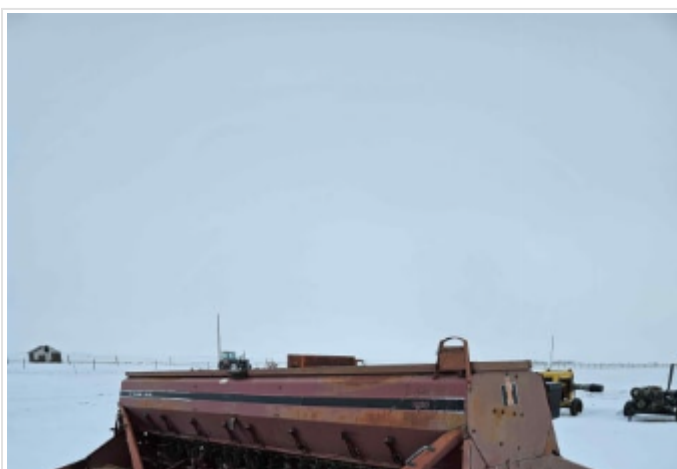
#1039 Noble Disc

Description	Noble Double Disc, front notch pans, hyd lift
-------------	---



#1040 John Deere 9350

Description	John Deere 9350 Hoe Drill, 20 ft, 7 inch spacing, steel packers
-------------	---



#1041 International 7200

Description	International 7200 hoe drill, 14ft, 7 inch spacing, steel packers
-------------	---



#1042 McCormick International Drill

Description	Mccormick international 14ft pan Drill, 7 inch spacing, steel rollers
-------------	---



#1043 International 620

Description	International 620 Pan Drill, 24ft, 6 inch spacing, transport, steel packers
-------------	---

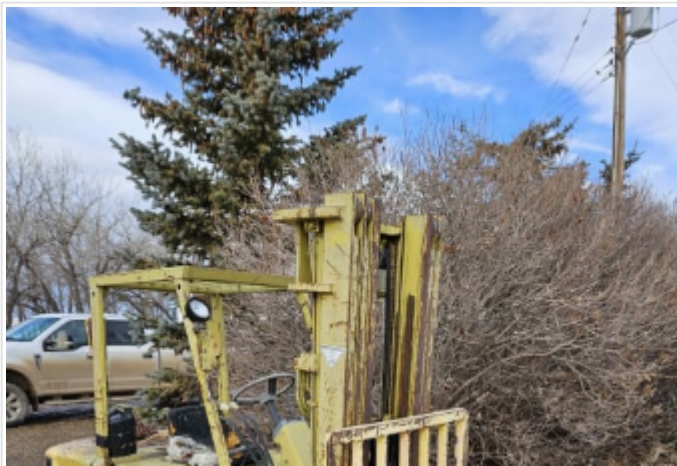


#1044 Swath Roller



#1045 Blanchard Swath Roller

Description	Blanchard Swath Roller, Guest Consignor
-------------	---



#1046 Mitsubishi Fork Lift

Description	Mitsubishi FG35A fork lift, gas engine, 7000 LB Lift, Pallet fork extensions, SER:F13C-50288
-------------	--



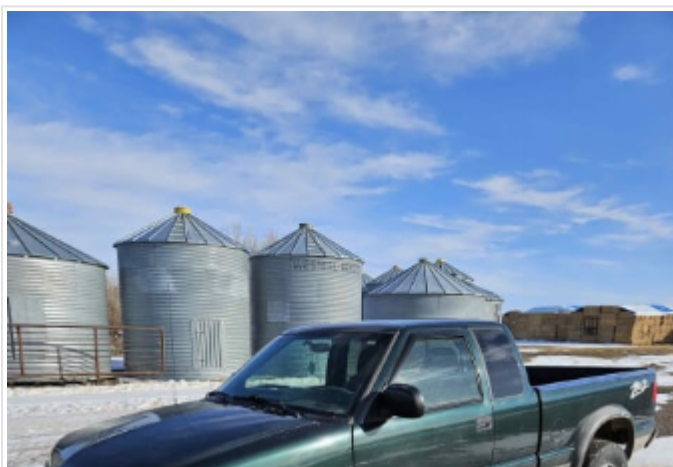
#1047 Yale Forklift

Description	Yale fork lift for parts or restoration
-------------	---



#1048 1981 Tri Axle Trailer

Description	24ft Tri Axel Trailer, 7000 LB axels, Pintle Hitch, Bale Strap Winches, Ser: 0281.C.W.0475, Guest Consignor
-------------	---



#1049 Chev S10

Description	2003 Chevrolet S10 Pick up, 4.3 L V6 Gas engine, 5 speed manual transmission, 4x4, 226628 kms, ZR2 Package, Guest Consignor, SER:1GCCT19X838271694
-------------	--



#1050 Ford Crown Victoria

Description	1994 Ford Crown Victoria Sedan, Automatic transmission, Gas engine, 249418 KMS, power locks, windows, seats, 215/70r16 tires, VIN:2FALP73W2RX189708
-------------	---



#1051 Ford F150

Description	1986 Ford F150 XLT Lariat, 5.0L V8 gas engine, Automatic transmission, 314058 kms, Reg Cab, Long Box, 235/75R15 tires, VIN:2FTEF15N4GCA85569
-------------	--



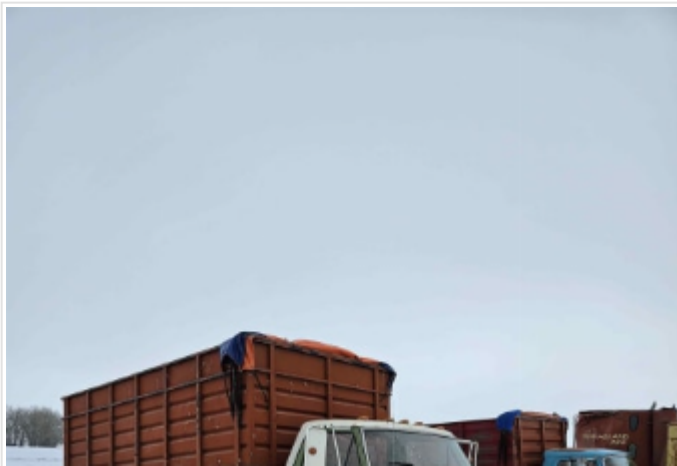
#1052 Dodge 2500

Description	1998 Dodge Ram 2500, Cummins Diesel engine, 5 speed manual transmission, 432131 kms, 4x4, reg cab long box, 245/75R16 tires, SER:63B7KF26D3WM210918
-------------	---



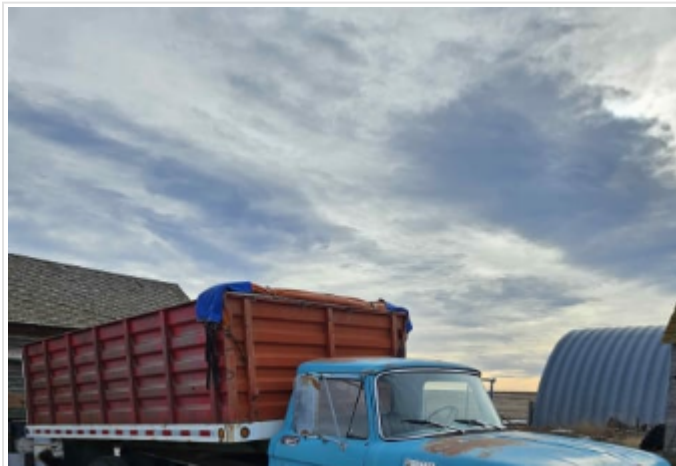
#1053 Gmc 960

Description	1967 Gmc 960, Gas v8 engine, 5 speed hi lo manual transmission, flat deck w/hoist, plastic tank, pump, single axle, VIN:CS1431137674
-------------	--



#1054 Ford F600

Description	1975 Ford F600 Custom, 5 speed hi/lo transmission, gas engine, 14ft steel box and hoist, 37018 miles showing, 9-20 rear tires, 8-20 front tires, VIN:F61DVV82870
-------------	--



#1055 Mercury M600 Truck

Description	1964 Mercury M600 Truck, 5 speed hi/low transmission, gas engine, 14ft steel box and hoist, 67404 miles showing, plumbed hyd, ladder, 9-20 rear tires, 8.25-20 fronts, single axle, SER:1816074L182241F
-------------	---



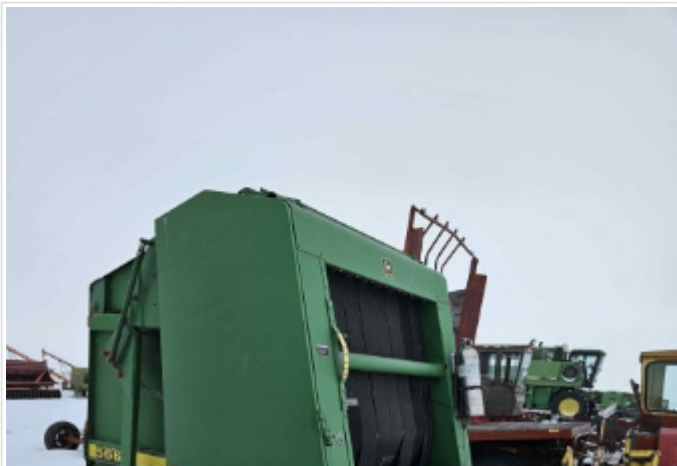
#1056 New Holland 359

Description	New Holland 359 Mixer mill
-------------	----------------------------



#1057 Bale King Vortex 3100

Description	Bale King Vortex 3100 Bale Shredder, 1000 pto, right hand delivery
-------------	--



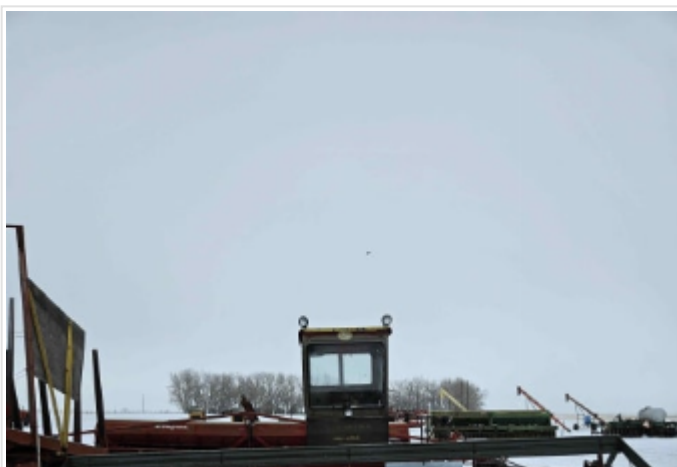
#1058 John Deere 566

Description	John Deere 566 Round Baler, 1000 pto, twine tie, SER:E00566X118527
-------------	--



#1059 New Holland 1049

Description	New Holland 1049 SP Bale wagon, manual transmission, gas engine, SER:21943
-------------	--



#1060 Versatile 400

Description	Versatile 400 Sp Swarher, gas engine, hydrostatic transmission, 18ft header, SER:16770
-------------	--



#1061 New Holland 1100

Description	New Holland 1100 SP Swather, Diesel engine, Hydrostatic transmission, 3641 hrs, 16ft hay header/ conditioner, SER:498886
-------------	--



#1062 Swather Header

Kind	Agriculture Harvest
Description	Universal Harvester Pick Up Reel, Ser:215613



#1063 John Deere 7720 Titan II

Description	John Deere 7720 Titan II Sp Combine, Diesel engine, 4 speed transmission, 3938 hrs, straw chopper, 24.5-32 front tires, 11.2-24 rear tires, John Deere 212 pick up header, Ser:H07720X610648
-------------	--



#1064 John Deere 222

Description	John Deere 222 Straight Cut Header
-------------	------------------------------------



#1065 Case Model S

Description	Case Model S Tractor, 4 cyl gas engine, 4 speed transmission, 540 Pto, Hyd Outlet, 12-26 rear tires, 6-16 front tires, Serial number plate missing these tractor were made from 1941-1952
-------------	---



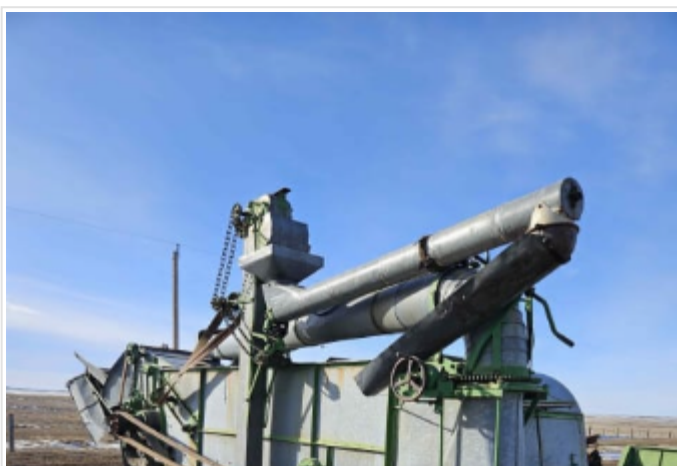
#1066 John Deere A

Description	1952 John Deere A, 2 cyl gas engine, 4 speed transmission, 540 pto, 5.5-16 front tires, 12.4-38 rear tires, SER:702432
-------------	--



#1067 John Deere 70

Description	1954 John Deere 70, Gas Engine, 6 speed transmission, 540 pto, 1 hyd, 7.50-18 front tires, 18.4-30 rear tires, power steering, SER:7010196
-------------	--



#1068 1940 John Deere

Description	1940 John Deere Thrashing Machine, 28 inch Feeder, on Rubber, SER:282056
-------------	--



#1069 John Deere 830

Description	1958 John Deere 830, Dual Fuel, 6 speed transmission, 3510 hrs showing, 540 pto, 7.5-18 front tires, 18.4-34 rears, SER:830284
-------------	--



#1070 John Deere 80 (Parts)



#1071 John Deere 80 (Parts)



#1072 John Deere 4020

Description	1967 John Deere 4020, 6 cyl diesel engine, 8 speed transmission, 540 pto, 2 hyd, 18.4-34 rear tires, 7.50-18 Front tires, rear wheel weights, John deere 148 front end loader with bucket, SER:T223R 173182R
-------------	--



#1073 John Deere 5020

Description	1968 John Deere 5020, 8373 Hrs, 8 speed transmission, 6 cyl diesel engine, 1000 pto, 24.5-32 rear tires, 11-16 fronts, rear wheel weights, cab, 2 hyd, SER:T323R-023512R
-------------	--



#1074 John Deere 8440

Description	1981 John Deere 8440 4WD Tractor, 7116 hrs, 16 speed transmission, 3 hyd, 1000 pto, CAHR, 18.4-34 tires, currently not running possible injection pump issue, Comes with tow hitch, SER:8440H 004693RH
-------------	--



#1075 Case 2090

Description	1981 Case 2090 Tractor, 6818 hrs, 6 cyl diesel engine, 12 speed partial powershift transmission, 1000/540 Pto, 3 pth, 2 hyd, 18.4-38 rear tires, 11-15 fronts, Ezee on front end loader, bale forks, bucket, SER:9910302
-------------	--



#1076 John Deere 9100

Description	1998 John Deere 9100 4WD, 6788 hrs, 24 speed transmission, CAHR, 4 Hyd, Draw bar, 20.8-38 tires rear wheel weights, John Deere Auto Track 300 Steering, VIN:RW9100H010008
-------------	---



#EAS International 1300

Kind	Trucks
Description	International 1300 Truck, Manual transmission, Gas engine, Hand pump hydraulic tilt deck, Currently not running engine turns over



#EAS Ford 3 Ton

Kind	Trucks
Description	Ford 3 ton for parts



#EAS Ford 3 Ton

Kind	Trucks
Description	Ford 3 ton for parts



#EAS Ford Truck

Kind	Miscellaneous Equipment & Supplies
------	------------------------------------



#EAS International Stationary Engines

Description	International Stationary Engines
-------------	----------------------------------



#EAS McCormick Deering Stationary Engine

Kind	Equipment
------	-----------



#EAS International Stationary Engine

Kind	Equipment
------	-----------



#EAS Cattle Alley Way Divider

Kind	Agriculture Livestock Handling
Description	Cattle Alley Way Divider, Guest Consignor



#EAS Cattle Oilers

Kind	Agriculture Livestock Handling
Description	Cattle Oilers, Guest Consignor



#EAS Feed Bunks

Kind	Agriculture Livestock Handling
Quantity	13.00
Description	Steel Frame, Plastic Lined Feed Bunks, Guest Consignor



#EAS Cement Feed Bunks

Kind	Agriculture Livestock Handling
Description	Guest Consignor



#EAS Auger Hoppers

Description	5 Auger Hoppers
-------------	-----------------



#EAS Drill Fill Augers

Kind	Agriculture Grain Handling
------	----------------------------



#EAS Bale Wagon

Kind	Agriculture - Other
------	---------------------



#EAS Ford F500 Cab

Kind	Pickups
------	---------



#EAS 3 Ton Frame

Kind	Trucks
Description	3 ton frame, box and hoist



#EAS Calf Table

Kind	Agriculture Livestock Handling
------	--------------------------------



#EAS Barbed Wire

Kind	Agriculture Livestock Handling
------	--------------------------------



#EAS Alley Way W/Head Gate

Kind	Agriculture Livestock Handling
------	--------------------------------



#EAS Panels

Kind	Agriculture Livestock Handling
Description	Large quantity of livestock panels



#EAS Coats Tire Changer

Kind	Shop Equipment
------	----------------



#EAS 500 Gallon Fuel Tanks

Kind	Tanks
------	-------



#EAS Shed



#EAS Quantity of Misc Pallets

Description	CLICK TO VIEW - Large Quantity of Pallets of Misc items, jacks, tractor weights, hose, tanks, motors, hand tools, staples, nails, screws, wire, tool boxes, fittings, oil cans and more!
-------------	--



#EAS Trough

Kind	Agriculture Livestock Handling
------	--------------------------------



#EAS Scale

Kind	Miscellaneous Equipment & Supplies
------	------------------------------------



#EAS Slip Tanks

Kind	Miscellaneous Equipment & Supplies
------	------------------------------------



#EAS Fence Posts

Kind	Agriculture Livestock Handling
------	--------------------------------



#EAS Truck Box Cover

Kind	Pickups
------	---------



#EAS Antique Radio

Kind	Household
------	-----------



#EAS Antique Wood Stove

Kind	Household
------	-----------



#EAS Antique Stove

Kind	Household
------	-----------



#EAS Blade

Kind	Support Items - Other
------	-----------------------



#EAS Liquid Feed Tank

Kind	Agriculture Livestock Handling
------	--------------------------------



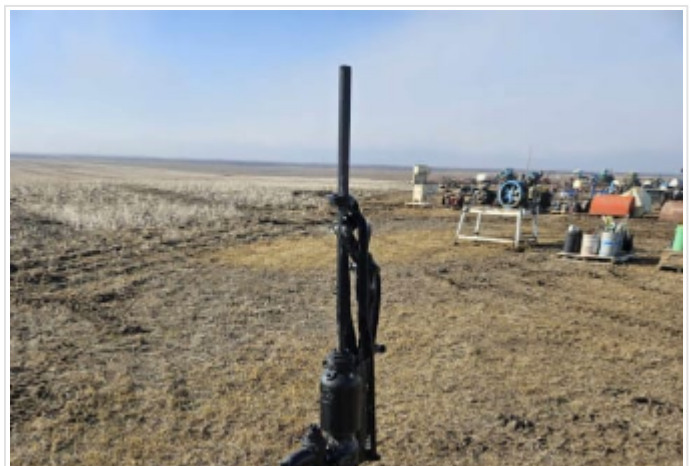
#EAS Pallet Forks

Kind	Shop Equipment
------	----------------



#EAS Pallets of Panels

Kind	Agriculture Livestock Handling
------	--------------------------------



#EAS Water Pump

Kind	Miscellaneous Equipment & Supplies
------	------------------------------------



#EAS Quantity of Chain and Boomers

Kind	Miscellaneous Equipment & Supplies
------	------------------------------------



#EAS Quantity of Barbed Wire

Kind	Miscellaneous Equipment & Supplies
------	------------------------------------



#EAS Pump

Kind	Miscellaneous Equipment & Supplies
------	------------------------------------



#EAS Generator Unit

Kind	Miscellaneous Equipment & Supplies
------	------------------------------------



#EAS Antique Motors

Kind	Equipment
------	-----------



#EAS Antique Walk Behind Plow

Kind	Equipment
------	-----------



#EAS Antique One Way Plow

Kind	Equipment
------	-----------



#EAS Bale Elevator

Kind	Agriculture Harvest
------	---------------------



#EAS Pencil Auger

Kind	Agriculture Grain Handling
------	----------------------------



#EAS Diamond Harrows

Kind	Agriculture Seeding & Tillage
------	-------------------------------



#EAS Quantity of Saw Horses

Kind	Shop Equipment
------	----------------



#EAS Hoist

Kind	Shop Equipment
------	----------------



#EAS Truck Box Trailer

Kind	Trailers - Other
------	------------------



#EAS Manual Squeeze

Kind	Agriculture Livestock Handling
------	--------------------------------



#EAS Cattle Chute

Kind	Agriculture Livestock Handling
------	--------------------------------



#EAS Wood Panels

Kind	
------	--



#EAS Antiques

Kind	Equipment
------	-----------



#EAS Generator

Kind	Miscellaneous Equipment & Supplies
------	------------------------------------

Visit perlich.com often, as items will be added as they arrive for the Sale!



[403-329-3101](tel:403-329-3101)

www.perlich.com