



ERIC & CATHY BIANCHI FARM AUCTION

July 23 11:00AM to 5:00PM



#1000 AW Smith-Son Horizontal Water Drilling

Description	AW Smith-Son Horizontal Water Drilling, c/w Trailer and Drill Stem
-------------	--



#1001 Troughs

Quantity	4.00
----------	------



#1002 Homemade Feeders

Quantity	2.00
----------	------



#1003 Tipping Table



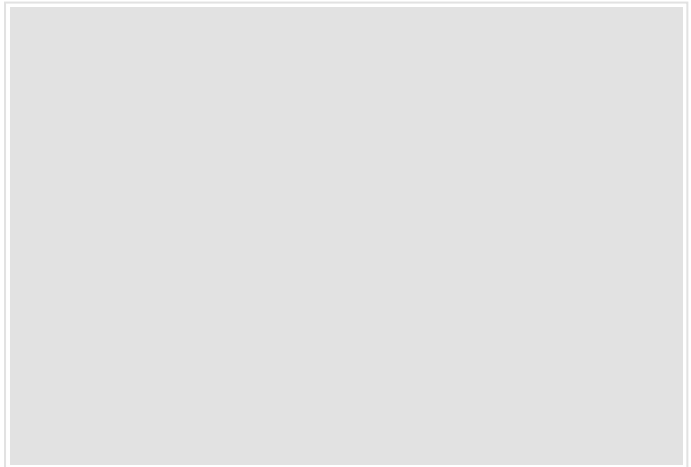
#1004 Portable Loading Chute



#1005 Hy-Qual Manual Squeeze Palpation Cage



#1006 3 Section Adjustable Alley System



#1007 Bunk Feeders



#1008 Free Standing Panels w/ Feed Bunk Frames

Quantity	2.00
----------	------



#1009 Quantity of 24' Free Standing Panels

Quantity	8.00
----------	------



#1010 30ft Bunk Feeders



#1011 25ft Bunk Feeder

Quantity	4.00
----------	------



#1012 Blue Panels

Quantity	12.00
----------	-------



#1013 Corral Panels

Quantity	12.00
----------	-------



#1014 24ft Free Standing Panel

Description	Damaged
-------------	---------



#1015 Round Bale Feeders

Quantity	3.00
----------	------



#1016 1992 Southland Stock Trailer

Description	1992 16' Southland Stock Trailer, 6 1/2x 16', ST225/75R15 Tires, Divider Gate, 5000lb Axles, Slide Rear Door, SER:2S9AH1267P1023071
-------------	---



#1017 NH 357 Mixer Mill

Description	NH 357 Mixer Mill, 540 PTO, c/w Bale Feeder Table, 2 Screens, Discharge Auger
-------------	---

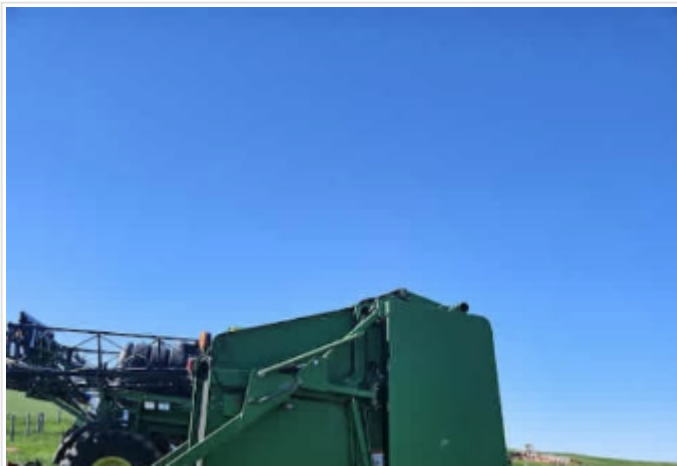


#1018 Vortex 3110 Bale King Processor

Description	Vortex 3110 Bale King Processor, Right Hand Delivery
-------------	--



#1019 Brandt Bale Commander VSF-X

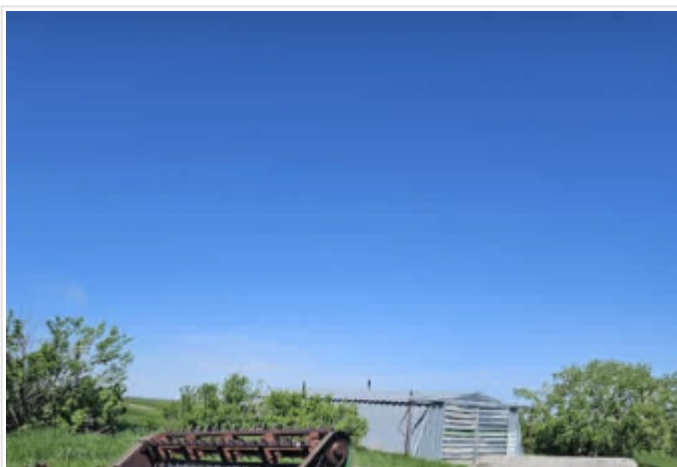


#1020 JD 535 Round Baler

Description	JD 535 Round Baler, c/w Gather Wheels, 1000PTO, SER: E00535X988574
-------------	--



#1021 New Holland BR780



#1022 Manure Box

Description	Farm Hand Manure Box on Trailer
-------------	---------------------------------



#1023 1996 Vanguard Trailer

Description	1996 25' Wrangler Vanguard Holiday Trailer, Awning, Air, Stove, Fridge, Electric Front Jacks
-------------	--



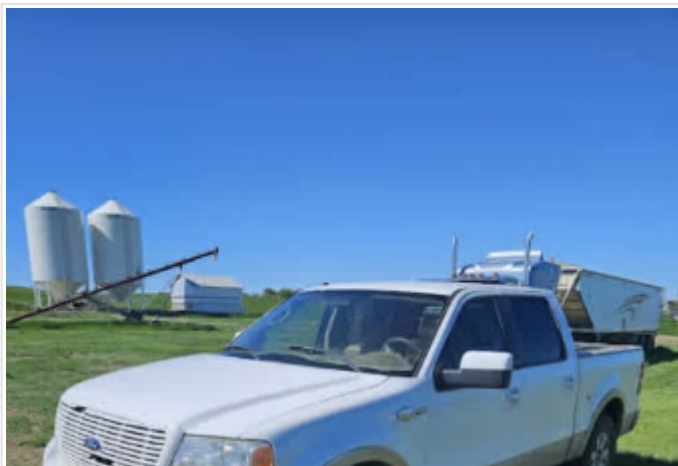
#1024 Raider 17' Boat

Description	Raider 17' Boat & Trailer, Johnson 140 Motor
-------------	--



#1025 2005 Chevrolet Avalanche 1500 4WD

Description	2005 Chevrolet Avalanche 1500 4WD, 201,851kms at time of listing, VIN:3GNEK12T65G265285
-------------	---



#1026 2008 F150 King Ranch

Description	2008 F150 King Ranch ½ Ton Pickup, 5.4 Litre Engine, Cam Faser, Automatic 308,000kms, LT275/70R18, c/w CARH, Power Locks & Windows
-------------	--



#1027 1999 Ford F250

Description	1999 Ford F250 ¾ Pickup, 4x4, Automatic, Diesel V8 Power Stroke, Loaded, 416,882kms, SER: 1FTNX21F1XDE72959
-------------	---



#1028 Chev 1500



#1029 Chev 1500

Kind	Pickups
------	---------



#1030 2012 Chevy Silverado

Description	2012 Chevy Silverado Vortec, ¾ Ton Pickup, 6 Liter, Automatic, CAHR, Electric Window and Doors
-------------	--



#1031 FarmKing Grain Auger

Description	FarmKing Grain Auger, Scissor Lift, Remote Swing Auger, Fertilizer, 540 PTO
-------------	---



#1032 Brandt 1370 Grain Auger

Description	Brandt 1370 Grain Auger, Remote Control on Swing Auger, Hyd Winch, Scissor Lift, 540 PTO
-------------	--



#1033 Sakundiak Auger

Description	Sakundiak Auger, HDS 1800, c/w Hyd Mover, Engine Not Running
-------------	--



#1034 Westfield Auger

Description	Westfield 10"x 50' Grain auger, Swing Auger
-------------	---



#1035 Brandt Auger

Description	Brandt 10"x60' Swing Auger
-------------	----------------------------



#1036 Brandt Grain Auger c/w Gas Engine



#1037 Brandt 835 Grain Auger

Description

Brandt 835 Grain Auger, 12HP Honda Gas Engine, Hyd for Bin Sweep



#1038 REM 2700 Grain Vac

Description

Rem 2700 Grain Vac 1600 PTO, SER: 3290



#1039 Vulcan 42' Cultivator



#1040 Hay Hiker 881



#1041 Noble Blade

Description	Noble Blade, Double Wing
-------------	--------------------------



#1042 1974 Western Star

Description	1974 Western Star, 13 Speed Transmission, 892 Detroit Engine, 430hrs, 18' Grain Box, 10.00R20, SER: BA200HD424401
-------------	---



#1043 45' Hay Trailer

Description	45' TrailMobile Hay Trailer – 52' Extend with Rack, SER: 102493007
-------------	--



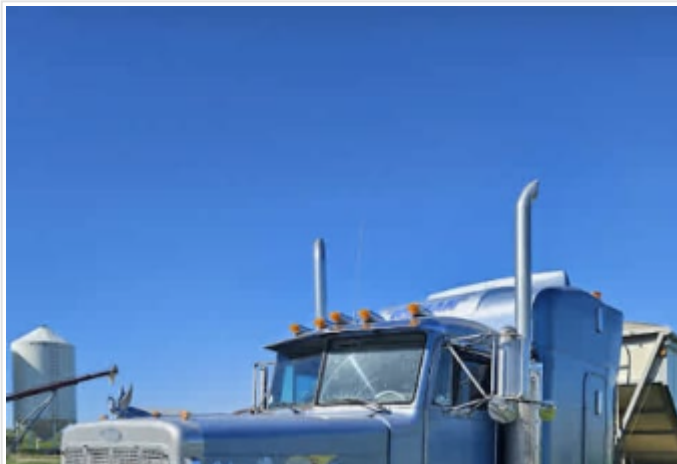
#1044 2001 40' Doepker Grain Trailer

Description	2001 40' Doepker Tri-Axle Grain Trailer Roll Tarp, 11R 22.5, SER: 2DEGDEGBFZ3921014180
-------------	--



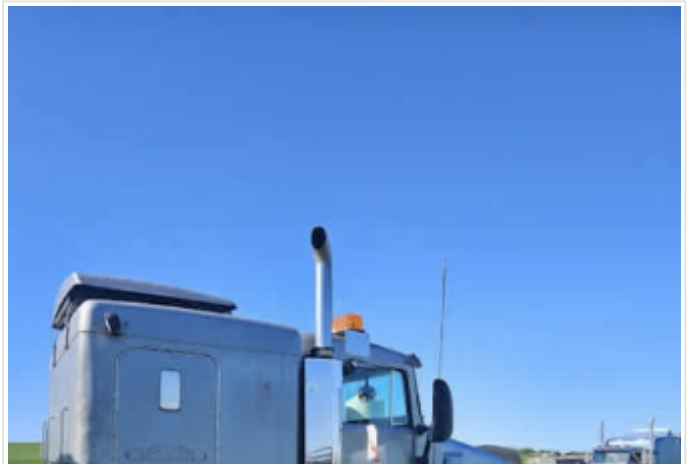
#1045 1996 40' Doepker Grain Trailer

Description	1996 40' Doepker Grain Trailer, Hopper Bottom, 11R24.5 Tires, SER:2D9GBSZ33T1016992
-------------	---



#1046 1994 Peterbilt Road Truck

Description	1994 Peterbilt Road Truck, 430-60 Detroit Series, 13 Speed Transmission, Midrise Bunk, 11R 22-5, 36 Rear Diff, SER: 1XP-5DR9X-6-R0341096
-------------	--



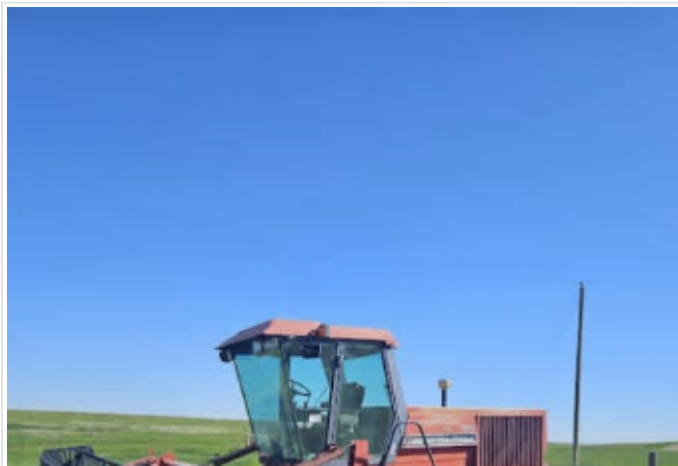
#1047 1990 Kenworth

Description	1990 Kenworth Detroit Series 60 Road Truck, 425HP, 18 Speed, Wet Rit, 11.24.5 Tires, 923,599kms, SER:2XKADR9X51M923101
-------------	--



#1048 2000 Prairie Star 4940 Swather

Description	2000 Prairie Star 4940 Swather, Double Swath, Cummins Diesel Engine, 21.5L-16 18L, c/w Side Shears, CAHR, Mac Don 972 Header, Hours Don't Read, SER: 135782
-------------	---



#1049 Case IH 8820

Description	Case International 8820 Double Swath Swather, CAHR, 3114hrs, SER: CFH0049374
-------------	--



#1050 Pull Type Swather

Description	25' Autotran Pull Type Swather, 540 PTO
-------------	---



#1051 Swath Roller



#1052A Grain Bin Ring



#1052 Swath Roller



#1052B PJ Trailer

Description	2015 PJ Gooseneck Trailer, 30 ft, Hydraulic beaver tail, tandem axel, dual wheels, 10000 LB winch, 235/80/R16 tires, VIN:4P5LY3423F1217635, Guest Consignor
-------------	---



#1053 New Holland TV140

Description	2003 New Holland TV140 Bi-Directional, NH7614 Loader, c/w Grapple Bucket, CAHR, 16.9-38 Tires, 1000 PTO, 3PTH, 3 Spool Hyd, SER: RVS020106
-------------	--



#1054 JD 4700 Sprayer

Description	JD 4700 High Clearance Sprayer, 90' Booms, 3700hrs, Outback Auto Steer, Auto Height For Booms, Section Control, 800 Gallon Tank, Hyd-Wheel Adjustment - All 4 Wheels, 23-1-26 Fronts and Rears
-------------	--



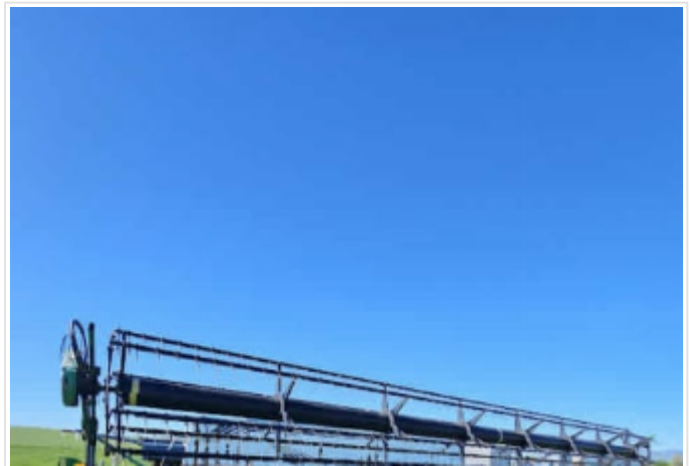
#1056 JD 936 Draper Header

Description	JD 936 Draper Header on Transport, c/w Pea Auger, SER: H00936D725849
-------------	--



#1055 2006 JD 9760 STS Combine

Description	2006 JD 9760 STS Combine, Built Rotor Upgrade, 3832 Engine Hours, 2657 Rotor Hours, Plumb for GPS, 800/65R32 Front Tires, 18.4-26 Rear Tires, \$55,000 on Repairs Front to Back
-------------	---



#1057 JD 936 Draper Header

Description	JD 936 Draper Header, c/w Transport, Parts Only
-------------	---



#1058 2005 JD 9420 Tractor

Description	2005 JD 9420 4WD Tractor, 18 Speed Transmission, 425 hr Power, 7652hrs, 5-Spool Hyd, 3PTH, Extra Aux Hyd Pump, 710,70R42 Tires, 78 Gallon Per Minute, 18' Loen 4 Way Blade
-------------	--



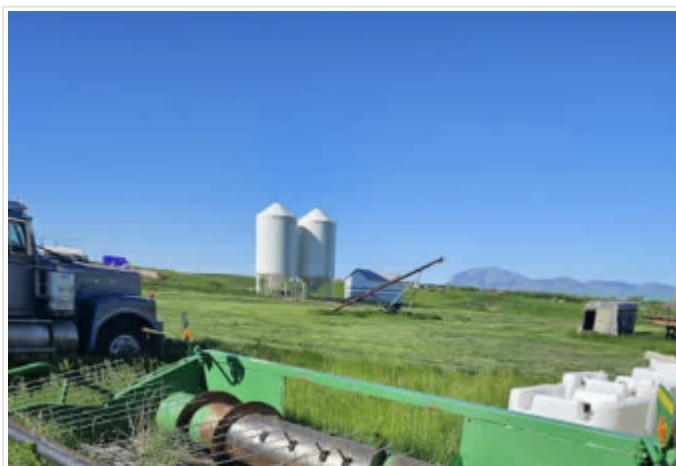
#EBA Kubota F3060 Lawn Mower

Description	Kubota F3060 Lawn Mower, 72' Front Deck, 3099hrs
-------------	--



#EBA JD 24' Cultivator

Kind	Agriculture Seeding & Tillage
Description	JD 24' Double Spring, Double Wing Cultivator



#EBA JD 914 Header

Description	JD 914 Header, SER: H00914W71021
-------------	----------------------------------



#EBA Kenworth Tandem Truck

Kind	Agriculture Grain Handling
Description	Kenworth Tandem Truck 2200 Cummins, 4x4 Transmission



#EBA Wheatland Hopper Bottom Bin

Kind	Agriculture Grain Handling
Description	Wheatland Hopper Bottom Bin, on skids



#EBA 2012 Polaris Ranger

Kind	Consumer Items - Other
Description	2012 Polaris Ranger 800 XP Side By Side 4x4



#EBA Double Wing Rotary Mower

Quantity	2.00
----------	------



#EBA BMB 3PTH Rotary Mower

Kind	Agriculture - Other
------	---------------------



#EBA Post Pounder

Kind	Agriculture - Other
Description	Flexicoil Post Pounder, Honda Mower



#EBA McCoy Renn Post Pounder

Kind	Agriculture - Other
Description	McCoy Renn Post Pounder



#EBA Rock Picker

Kind	Agriculture - Other
------	---------------------



#EBA Post Hole Auger

Kind	Tractor Attachments
Description	Front Bucket Mount Post Hole Auger



#EBA 12' 2 Way Blade

Kind	Agriculture - Other
------	---------------------



#EBA Grey Slip Tank

Kind	Miscellaneous Equipment & Supplies
------	------------------------------------



#EBA Slip Tank

Kind	Miscellaneous Equipment & Supplies
------	------------------------------------



#EBA Steel Building

Kind	Miscellaneous Equipment & Supplies
Quantity	2.00
Description	Steel Buildings 8'x10' Gas Plant Building



#EBA 2003 Mustang

Kind	Consumer Items - Other
Description	2003 Mustang Car, Not Running



#EBA Pontiac Car

Kind	Consumer Items - Other
Description	Pontiac Car, Not Running



#EBA Polaris Quad

Kind	Consumer Items - Other
Description	Polaris Sportsman Quad, Not Running

Visit perlich.com often, as items will be added as they arrive for the Sale!



[403-329-3101](tel:403-329-3101)

www.perlich.com