



LETHBRIDGE MACHINERY & EQUIPMENT CONSIGNMENT SALE

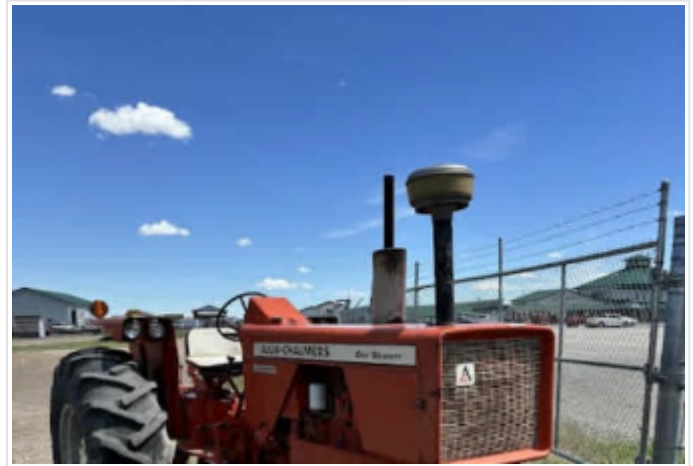
PBAM Auction Market

August 7 10:00AM to 5:00PM



#4423B 1940 JD-LI Industrial Tractor

Description	1940 JD-LI Industrial Tractor c/w Sickle Mower
-------------	--



#4900U Allis Chalmers 170

Description	Allis Chalmers 170, Land Handler RC, 4 Cylinder Gasoline Engine, 8 Speed Transmission, PS, 2 Hydraulic Outlets, PTO, 18.4-28 Rear Tires, 7.50-16 Front Tires, S/N: 1707.451
-------------	---



#4900F Oliver 770 LPG

Kind	Equipment
Description	Oliver 770 LPG, 6 Cylinder Engine, 6 Speed Transmission, Single Hydraulic, 16.9-30 Rear Tires, PTO, S/N: 111667-736



#4915N John Deere LA

Kind	Equipment
Description	John Deere LA, 2 Cylinder Gas Engine, 3 Speed Transmission, 9.5-24 Rear Tires, 5.00-15 Front Tires, S/N: LA4330



#4915T Massey Harris Pony

Kind	Equipment
Description	Massey Harris Pony, 4 Cylinder Gas Engine, 3 Speed Transmission, 540 PTO, Belt Pulley, 8-24 Rear Tires, 5.00-15 Front Tires, S/N:PGS1282



#4915S IH Farmall A

Kind	Equipment
Description	IH Farmall A, 4 Cylinder Gas Engine, 4 Speed Transmission, 540 PTO, Belt Pulley, 9.5-24 Rear Tires , 5.00-15 Front Tires, S/N: FAA164986



#4915Q IH W4

Kind	Equipment
Description	IH W4, 4 Cylinder Gas Engine, 540 PTO, Belt Pulley, 13-26 Rear Tires, S/N: WBH32356W1



#4900R 1953 Golden Jubilee Model NAA

Kind	Equipment
Description	1953 Golden Jubilee Model NAA, 4 Cylinder Gasoline Engine, 3 Speed Transmission, 11.2-28 Rears, 5.5-16 Front Tires, 3PTH, PTO



#4900S John Deere M

Kind	Equipment
Description	John Deere M, 2 Cylinder Gasoline Engine, 4 Speed Transmission, Belt Pulley, PTO, Fast Hitch, 11.2-24 Rear Tires, 5.00-16 Front Tires, c/w John Deere M2-12-14", 2 Bottom Plow, S/N: M-42227



#4900Q 1953 Golden Jubilee Model NAA

Kind	Agriculture Tractors
Description	1953 Golden Jubilee Model NAA, 4 Cylinder Gasoline Engine, 3 Speed Transmission, 12.4-28 Rear Tires, 6.50-16 Front Tires, 3PTH, PTO



#4900G Massey Harris 44

Kind	Equipment
Description	Massey Harris 44, 4 Cylinder Gasoline Engine, 4 Speed Transmission, PTO, Belt Pulley, S/N:44GS-15991



#4900I Massey Harris 55

Kind	Equipment
Description	Massey Harris 55, LPG Gasoline Engine, 4 Speed Transmission, Power Steering, PTO, 1 Hydraulic Outlet, 18.4-34 Rear Tires, 7.50-18 Front Tires, S/N: 55B1SF13995



#4900J Massey Harris 444

Kind	Equipment
Description	Massey Harris 444, Gasoline Engine, 4 Speed Transmission, PTO, 2 Hydraulics, 18.4-30 Rear Tires, 7.50-16 Front Tires, S/N:444G1SF77235



#4900K Massey Harris 55

Kind	Equipment
Description	Massey Harris 55, Gasoline Engine, 4 Speed Transmission, PTO, 1 Hydraulic Outlet, 15-34 Rear Tires, 7.50-18 Front Tires, S/N:55G1SF14322



#4900H Massey Harris 55

Kind	Equipment
Description	Massey Harris 55, 4 Cylinder Gasoline Engine, 4 Speed Transmission, PTO, 1 Hydraulic Outlet, 18-26 Rear Tires, 18in Front Tires, S/N:55G1WH13132



#4915B John Deere AR Unstyled

Kind	Equipment
Description	John Deere AR Unstyled, 2 Cylinder Gasoline Engine, 2 Speed Transmission, 540 PTO, Belt Pulley, 13-24 Rear Tires, 6.00-16 Front Tires, S/N: 260942



#4900L Cockshutt 1850 LPG

Kind	Equipment
Description	Cockshutt 1850 LPG, 6 Cylinder Engine, 6 Speed Hydra Power Drive, 23.1-30 Rear Tires, S/N: 172434-427



#4900X Massey Ferguson 65

Kind	Equipment
Description	Massey Ferguson 65, LPG, 4 Cylinder Engine, 6 Speed Transmission, PS, 540 PTO, 3PTH, 1 Hydraulic Outlet, 13.6-38 Rear Tires, 6.00-16 Front Tires, S/N:CBM680443



#4900V Massey Harris 44

Kind	Equipment
Description	Massey Harris 44, 4 Cylinder Diesel Engine, 4 Speed Transmission, PTO, Belt Pulley, 14-30 Rear Tires, 6.50-16 Rear Tires, S/N:44DS6030



#4900E Allis Chalmers D15 RC

Kind	Equipment
Description	Allis Chalmers D15 RC, LPG, 4 Cylinder Engine, 4 Speed Transmission, 3PTH, 540 PTO, PS, 14.9-24 Rear Tires, 6.50-16 Front Tires, S/N: 19565



#4900W Massey Harris 33

Kind	Equipment
Description	Massey Harris 33, 4 Cylinder Gasoline Engine, 4 Speed Transmission, PS, Belt Pulley, PTO, 3PTH, 14.9-28 Rear Tires 5.50-16 Front Tires, S/N:33G1SF5883



#4915E John Deere 60

Kind	Equipment
Description	John Deere 60, 2 Cylinder Gas Engine, 6 Speed Transmission, 540 PTO, Belt Pulley, 16.9-30 Rear Tires, 7.50-16 Front Tires, S/N: 6028142



#4915R Massey Harris 22

Kind	Equipment
Description	Massey Harris 22, 4 Cylinder Gas Engine, 4 Speed Transmission, 540 PTO, 10-28 Rear Tires, S/N: 22GS2591



#4900Z Oliver 70

Kind	Equipment
Description	Oliver 70, 6 Cylinder Gasoline Engine, 4 Speed Transmission, 540 PTO, Belt Pulley, 13.6-24 Rear Tires, 6.00-16 Front Tires, S/N: 314271



#4915D John Deere D

Kind	Equipment
Description	John Deere D, 2 Cylinder Gas Engine, 3 Speed Transmission, 540 PTO, Belt Pulley, 16.9-30 Rear Tires, 7.50-18 Front Tires, S/N: 189068



#4915C John Deere AR

Kind	Equipment
Description	John Deere AR, 2 Cylinder Gasoline Engine, 6 Speed Transmission, 540 PTO, Belt Pulley, 16.9 Rear Tires, 6.00-16 Front Tires, S/N: 274617



#4915P Massey Ferguson 50 LPG

Kind	Equipment
Description	Massey Ferguson 50 LPG, 4 Cylinder Engine, 6 Speed Transmission, 540 PTO, 3PTH, 14.9-24 Rear Tires, 6.00-16 Front Tires, S/N:SBM517436



#4915G John Deere 60

Kind	Equipment
Description	John Deere 60, 2 Cylinder Gasoline Engine, 6 Speed Transmission, 540 PTO, Belt Pulley, Power Steering, Adjustable Rear Tread, 16.9-30 Rear Tires, 7.50-18 Front Tires, S/N:6055294



#4915H John Deere 70

Kind	Equipment
Description	John Deere 70, LPG, 2 Cylinder Engine, 6 Speed Transmission, 540 PTO, Belt Pulley, Adjustable Rear Tread, 16.9-30 Rear Tires, 7.50-18 Front Tires, S/N: 7027060



#4915I John Deere 70

Kind	Equipment
Description	John Deere 70, Diesel, 2 Cylinder Engine, 6 Speed Transmission, 540 PTO, Belt Pulley, 1 Hydraulic Outlet, 18.4-30 Rear Tires, 7.50-18 Front Tires, Power Steering, S/N:7022465



#4915K John Deere 730

Kind	Equipment
Description	John Deere 730, 2 Cylinder Diesel Engine, Electric Start, 6 Speed Transmission, Power Steering, 540 PTO, Belt Pulley, 1 Hydraulic Outlet, 18.4-30 Rear Tires, Adjustable Tread, 7.50-18 Front Tires, S/N:7308202



#4423B 1929 JD-GP Tractor

Kind	Equipment
Description	1929 JD-GP Tractor on Steel Rear Wheels, Row Crop



#4423C JD Model A Tractor

Kind	Equipment
Description	JD Model A Tractor, Unstyled A, 11-36 Rear Tires, 5.50-16 Front Tires



#49000 Military Ford 4x4

Description	Military Ford 4x4, 6 Cylinder Gasoline Engine, 4 Speed Transmission, 7.00x20 Tires, VIN: 270HH7-81867
-------------	---



#4915X Unit #67-03

Description	Unit #67-03, Cab/Chassis, 2003 Sterling, 3126 Caterpillar Engine, RTO-9MIL Transmission, AC, Fuel Air, Spring Suspension (TUFTRAC), Tandem Axle, 385/65R22.5 Front Tires, 11R22.5 Rear Tires, PTO, Hydraulic Reservoir, VIN: 2FZHAWAK03AL71951
-------------	--



#4915Y Unit #135-13

Description	Unit #135-13 (Semi Tractor) (Pinnacle), 2013 Mack CXU613, Mack Engine, MP8-515C, 18 Speed Transmission, Loaded, Leather Interior, Air Ride, 48' Flat Top Bunk, 11R24.5 Tires, on Aluminum Budds, Headache Rack, 5th Wheel (Air Slide) Wet Kit, Tool Box, Approx. 560,000kms at listing, VIN: 1M1AW07Y3DM026038
-------------	--



#4900M Unit 35-09

Description	Unit 35-09, GMC 8500, Tandem Axle, Isuzu, Diesel, Auto Transmission, 11R22.5 Tires, Hendrickson Suspension, Air Brakes, c/w HIAB 100A Knuckle Boom Crane, 20ft Deck w/ Headache Rac, Winches, Tool Boxes, VIN: 1GDT8C4B59F408910
-------------	--



#4900C Unit #88

Description	Unit #88: 1998 IH 2574 Tandem Axle, Cab/Chassis, CAT C-12 Engine, 13 Speed Transmission, Air Brakes, Air Ride, 11R22.5 Tires, Air Shift PTO, 610,863kms at time of listing, VIN:1HTGGAXR7XH633906, Not Running
-------------	--



#4900A Unit #33

Description	Unit #33, GMC 8500, Single Axle, C/C, 3126 CAT Diesel, Eaton Fuller 8LL, Transmission, Air Brakes, Air Shift PTO, PW, PDL, Cruise, Tilt, Air Ride, 11R22.5 Tires, 444,257kms, VIN: 1GDP7H1C72J505527
-------------	--



#4900B Unit #62 1994 GMC

Description	Unit #62 1994 GMC, Topkick, V8, 5&2 Speed, Single Axle, PTO, Spring Ride, 11R22.5 Tires, 443,684kms, VIN: 1GDL7H1M9J521245, Not Running
-------------	---



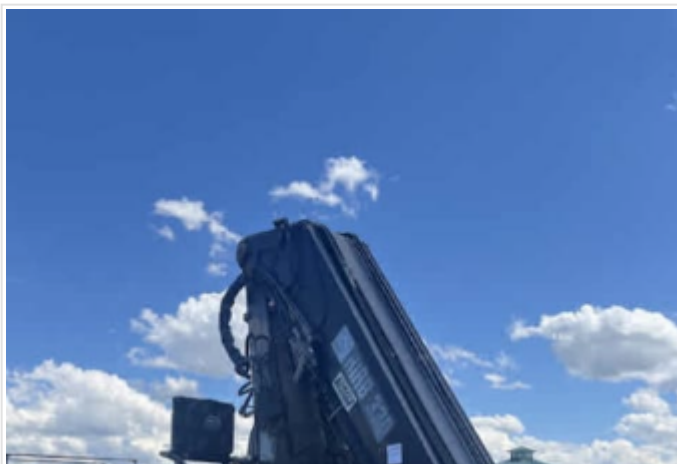
#4930N Unit 43-05

Description	Unit 43-05, 2004 IH 4400 SBA, Single Axle, 466 Engine, Auto Transmission, 23,000# Rear Axle, 12,000# Front Axle, 11R22.5 Tires, PTO, Hydraulic Reservoir, Spring Ride, Air Brakes, VIN: 1HTMKAARX5H111651
-------------	---



#4900P 2005 Chev C8500 Cab/Chassis

Description	2005 Chev C8500 Cab/Chassis, 3126 CAT Engine, 5 Speed Transmission, Air Brakes, Spring Ride, 11R22.5 Tires, PTO, Wet Kit (Air Controls), VIN: 1GBM8C1CX5F527380
-------------	---



#4900D Hiab 330

Description	Hiab 330, Knuckle Boon Crane, Mfg. 2004, S/N:330-1077, Radio Controlled, Note: Crane is Missing Stabilizers, Not Running
-------------	--



#4930K 1993 Southland Pintle Hitch Trailer

Description	1993 Southland Pintle Hitch Trailer, 20ft Deck, 5ft Ramps, D-Rings, 275/55R-22.5 Duals, Air Brakes, VIN: 259NB5669P1023065
-------------	--



#4930J 2016 Big Tex Trailer

Description	2016 BIG TEX, Pintle Hitch Trailer, Tandem Axle Dually (20,000#), Fold Up Beaver Tails, Center Section Drop, 20ft Deck, 5ft Ramps, Electric Brakes, VIN:16VHX202482613626
-------------	---



#1000 Kawasaki Side By Side

Description	2017 Kawasaki Mule 4X4 Side by side, Model KAF820-B, 2513hrs at time of listing, 2 row seating, adjustable box, VIN:JKBAFSB12HB509436
-------------	---

Visit perlich.com often, as items will be added as they arrive for the Sale!



[403-329-3101](tel:403-329-3101)

www.perlich.com