



SPECIAL HOMERAISED ONE IRON BRED SALE

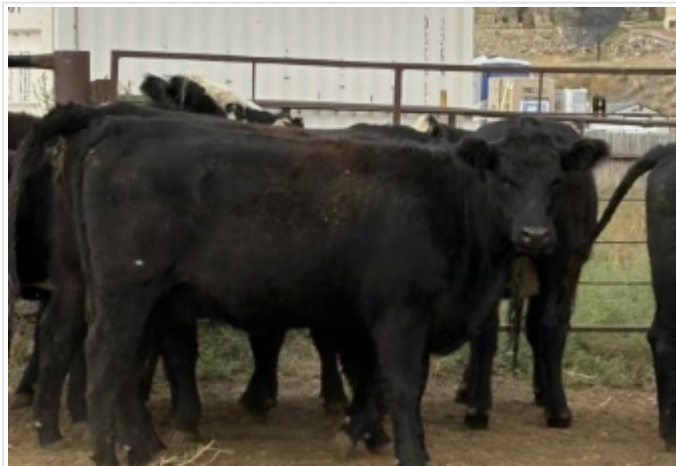
90055 RR 210, Lethbridge, Alberta, Canada, T1K 4P4

December 2 1:00PM to 5:00PM



#2 WATSON CATTLE CO

Summary	<p>WATSON CATTLE CO 35 Fancy Red Angus and Red Angus X Gelbvieh Hfrs, Home Raised and One Iron Bred to low birth wt 71lb and 74lb Red Angus Bulls. Bulls in May 20th Out July 1st Note: 50% of this Herd is Red Angus & 50% is Red Angus with a 1/4 to 1/8 Gelbvieh X Full Herd Health Program; Inforce 3 at birth, Bovishield Gold FP, Ultrabac 7 prior to breeding</p>
---------	---



#4 O + RANCH

Summary	<p>O + RANCH 35 Impressive Angus & Angus X Hfrs, Home Raised and One Iron Consisting of: 26 Solid Blk Hfrs 6 BBF Hfrs 3 Red Hfrs Bred to easy calving Border Butte and Cudlobe Blk Angus Bulls. (78lb birth wt) Bulls in June 28th Out Aug 5th Full Herd Health Program</p>
---------	--



#6 KIM JANZER

Summary	<p>KIM JANZER 50 Choice Home Raised, One Iron Blk Angus Hfrs Bred to low birth wt Blk Angus Bulls. Bulls in June 1st. Out Aug 1st Full Herd Health Program: Branding; Bovishield Gold 1 shot, Tasvax 8, Long Range Parasites. Weaning; Bovishield Gold 1 shot, Tasvax 8, Solmectin pour on. Preg checking Tasvax 8, Virashield 6 + VL5 HB, Solmectin pour on. Note: These Hfrs were born and raised at home. A calm, quiet group of heifers with great temperament. Bucket fed daily, familiar with quads, dogs & electric fencing. These are a uniform set of Hfrs that will incorporate well into any herd!</p>
---------	---



#8 ELDORADO ANGUS

Summary	<p>ELDORADO ANGUS 213 Excellent Home Raised, One Iron Blk Angus & Angus X Hfrs. One Iron, NVB Bred to low birth wt easy calving Eldorado Blk Angus Bulls. Bulls in July 1st. Out Aug 13th Full Herd Health Program Note: These are a powerhouse set of Hfrs that were selected to make top-end mamma cows. They will continue to be top producers in your operation for years to come.</p>
---------	---

Visit perlich.com often, as items will be added as they arrive for the Sale!



[403-329-3101](tel:403-329-3101)

www.perlich.com