

POWER UP YOUR PASTURE BULL SALE

- YEARLING BLACK ANGUS • YEARLING CHAROLAIS •
- YEARLING RED & BLACK SIMMENTAL •



FLEMING STOCK FARMS

RJ
LIVESTOCK



FRIDAY . APRIL 5th 2024 . 1:30pm
FOOTHILLS AUCTIONEERS . STAVELY, ALBERTA

POWER UP YOUR PASTURE

BLACK ANGUS · RED & BLACK SIMMENTAL · CHAROLAIS

FRIDAY . APRIL 5th 2024 . 1:30PM
FOOTHILLS AUCTIONEERS . STAVELY, AB

PLEASE BE OUR GUESTS FOR OUR PRE-BULL SALE LUNCH AT NOON FLEMING STOCK FARMS

Home 403-687-2288
Duncan Fleming 403-625-0427
Cecilie Fleming 403-625-1124
flemingstockfarms@gmail.com

RJ LIVESTOCK

Justin Pittman 403-647-4095
Ricki Fleming 403-625-1606
rjlivestock13@gmail.com

SALE DAY CONTACTS

Foothills Auctioneers Ltd. 403-549-2120
Duncan Fleming 403-625-0427
Cecilie Fleming 403-625-1124
Ricki Fleming 403-625-1606
Justin Pittman 403-647-4095
Darcy Moorhead 403-635-0308
Rob Bergevin 403-625-7171
Alan 'Buck' Thompson 403-994-0828

AUCTIONEER

Bob Perlich 403-382-7800

RINGMEN

Darcy Moorhead 403-635-0308
Rob Bergevin 403-625-7171

SALES CONSULTANT

Castlerock Marketing 306-741-7485
Shane Castle

ONLINE BIDDING www.dlms.ca

If you are unavailable to make it to the sale, online bidding will be available through DLMS.

Mark Shologan 780-699-5082

STOCKMAN'S INSURANCE

Cheryl Brown 403-601-3460

PHOTOS & VIDEOS www.cattlevids.ca

Photos & Video taken by Mark Shologan on February 11, 2024 and are available for viewing at www.cattlevids.ca

Internet Bidding Available



FLEMING STOCK FARMS

RJ
LIVESTOCK

Stockman's CODE OF DOING BUSINESS

Be honest

Stand up for your industry

Don't change more than you need to

Treat your customers with respect
and build relationships

Be thankful for those you have the
privilege of doing business with



Welcome to the 2024
POWER UP YOUR PASTURE
BULL SALE

HOSTED BY FLEMING STOCK FARMS & RJ LIVESTOCK

Thank you for taking the time to view our catalog and the bulls on offer from Fleming Stock Farms & RJ Livestock. We are very pleased with this year's offering of yearling Black Angus, Simmental and Charolais bulls. The bulls are being developed at Duncan & Cecile's place, 1/2 mile west of the Granum junction of Highways #2 & #519. We encourage and welcome you to stop by any time prior to the sale to preview the bulls.

This year's sale is on Friday, April 5, 2024 at Foothills Auctioneers in Stavelly, AB at 1:30 PM. We will have DLMS on site to broadcast the sale and to take your online bids if you are unable to attend the sale in person. Our sale day contacts have been through the bull pens and can assist you if needed or give any of us a call to discuss your bull needs.

We are proud of the three-breed offering which gives our customers an opportunity to maximize their options in their breeding programs. I guess you can say we are your, "One Stop Bull Shop". We may not have the largest offering, but we pride ourselves on our bull criteria as our knife is sharp in the Fall and the scrotal tape is tight in the Spring. We cull hard, if a bull is below standards in the Fall, he is culled. We believe in quality over quantity. We don't push our bulls for excessive weight gain, we like to develop the bulls for longevity. We know that performance is important but not at the expense of fertility.

Overall herd health is vital in our breeding programs. All cattle are a part of a full Boehringer Ingelheim Express Verified Vaccination program. Our entire herd has been on the herd health program for decades and we are one of their Express Verified Purebred Herds. Next to vaccinations a solid mineral program is paramount. Our herds are on a year-round mineral program with OLS Mineral tubs. This mineral program offers one of the best mineral packages for beef cattle around without over consumption. Calves also receive a dose of MultiMin90 at birth to give them the best start possible. Our operation is Verified Beef Production+ (VBP+) Certified. We strive to maintain our bulls in peak health so they will have the longevity and durability to withstand your breeding seasons and the rugged range conditions that nature provides.

All bulls will be scrotal measured, semen tested and will have passed a breeding soundness evaluation by Dr. Pat Burrage of the Lethbridge Animal Clinic just prior to the sale. All bulls are fully guaranteed. All the bulls are Express Verified and will have been vaccinated to protect their testicles from infection of the BVD virus. All bulls will receive their Express FP and their 8-way booster vaccination prior to the sale.

We would like to tour you through our Bull Pens. Stop by any time prior to the sale. Feel free to reach out to any of us, we will be happy to assist you with your bull selection and look forward to your attendance at our 2024 Bull Sale.



Duncan, Cecile & Cooper Fleming
FLEMING STOCK FARMS
www.flemingstockfarms.ca



Ricki Fleming, Justin Pittman, Scarlett & Zane
RJ LIVESTOCK



HERD HEALTH

Maintaining a healthy herd starts with a solid vaccination and mineral program. We have worked closely with Fort Macleod Veterinary Clinic & Lethbridge Animal Clinic to ensure the highest herd health we possibly can.

CALF HERD HEALTH PROTOCOL

- **BIRTH**
Inforce 3, MultiMin 90, Toltrazuril
- **SPRING PROCESSING** (approx 3 months)
Pyramid® 5 + Presponse® SQ, Fermicon 7/Somnugen
- **SUMMER PROCESSING**
Cyclene (Fly control)
- **WEANING**
Pyramid® 5 + Presponse® SQ, Fermicon 7/Somnugen, Quite Wean Nose tags
- **Age Verified & Express Verified® + Prime Verified**
- **OLS Mineral** Free choice year round

COW HERD HEALTH PROTOCOL

- **PRE-BREEDING**
Express® FP 5-VL5, Tasvax 8
- **SUMMER**
Cyclene (Fly control)
- **PRE-CALVING**
Scourguard 4K/C
Bred Heifers - Boosted with Scourguard Bos 9
- **WINTER**
Clean Up II (Lice prevention)

SALE BULL HERD PROTOCOL

- **PRE-BREEDING**
Express® FP, Tasvax 8
- **OFF SEASON** (Fall/Winter)
Solmectin & Clean Up II
- **OLS Mineral** Free choice year round



If you are using Herdtrax, we will arrange transfer of our Herdtrax records on your bull purchase into your system.



VBP+ CERTIFIED
www.verifiedbeef.ca



CERTIFIED SUSTAINABLE
crsbcertifiedsustainablebeef.ca

Express® FP
EXPRESSVerified.ca

Fleming Stock Farms & RJ Livestock
are Express® Verified - Seed Stock Producers



ORWIG'S LIVESTOCK SUPPLEMENTS

- Made from the VERY BEST products on the market
- Chelated trace mineral package
- All natural plant proteins
- Increases forage digestion by 15-30%
- No chemical hardeners
- Low cost per head - per day
- Healthier immune systems
- Stronger heat signs and stronger breed back
- Better milk production
- Heavier weaning weights

~ DELIVERY AVAILABLE ~

Area OLS Dealers:

Duncan & Cecilie Fleming - Fleming Stock Farms
Granum, Alberta

Office 403-687-2288 • Cell 403-625-0427 • Toll Free 800-565-5288

LEARN MORE AT WWW.OLSTUBS.COM

303 FLEMING *Crank* 303L

#2344369 | BD: 16-Jan-23 | Tattoo: FSF 303L | POLLED

BW: 96 | ActWW: 735 | Feb 19/24 WT: 1294 | AOD: 11

74-51 SUDDEN LOOK 1023
DMM CRANK 13E
 DMM MISS ESSENCE 14Y

HYLINE RIGHT TIME 338
FLEMING 222 MISS ESSENCE
 FLEMING 920 MISS ESSENCE

B C LOOKOUT 7024
 EXG LUCY P061 R3
 GUMBO GULCH CREED 94S
 DMM MISS ESSENCE 37T

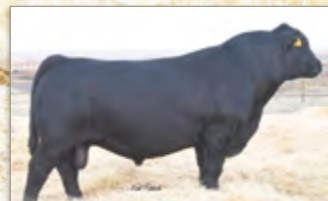
LEACHMAN RIGHT TIME
 HYLINE PRIDE 265
 FLEMING 508 RANGER SMITH
 FLEMING 146 LILAC

EPD's CE: -6 BW: 5.9 WWT: 56 YWT: 102 MILK: 26

- This Crank son is thick made, tight sheathed and wide topped.
- Out of a newer miss cow with multiple daughters & grand daughters working in the herd.
- His sire DMM Crank 13E has a little different pedigree with loads of power.
- Maternal brother sold to Roland Sippola.



DMM CRANK 13E - SIRE



KESSLERS COMMODORE - SIRE

305 FLEMING *Commodore* 305L

#2344371 | BD: 17-Jan-23 | Tattoo: FSF 305L | POLLED

BW: 94 | ActWW: 835 | Feb 19/24 WT: 1610 | AOD: 8

EPD's CE: -1 BW: 3.3 WWT: 80 YWT: 136 MILK: 26

CONNEALY COMRADE 1385
KESSLERS COMMODORE 6516
 KESSLERS RAINBOW 0595

S A V HARVESTOR 0338
FLEMING 516 JENA DAISY
 FLEMING 101 JENA DAISY

CONNEALY CONSENSUS 7229
 HAPPY GEE OF CONANGA 919
 SUMMITCREST COMPLETE 1P55
 KESSLERS RAINBOW 3043

S A V HERITAGE 6295
 S A V EMBLYNETTE 7749
 HERO 6267 OF R R 2418
 FLEMING 921 JENA

- A sharp dressed lad with tons of mass that carries throughout.
- He is long spined, smooth made with great neck extension.
- Use any Commodore son to add tremendous body length, big tops, scale busting performance, structural soundness and to make great daughters.
- A maternal sister walking at Eastondale Angus & his maternal brother is a herd sire at Freyburn Angus.



SCHIEFELBEIN ATTRACTIVE 4565- SIRE OF LOTS 306, 319

306 FLEMING *Attractive* 306L

#2344372 | BD: 17-Jan-23 | Tattoo: FSF 306L | POLLED

BW: 84 | ActWW: 748 | Feb 19/24 WT: 1193 | AOD: 10

JMB TRACTION 292
SCHIEFELBEIN ATTRACTIVE 4565
FROSTY ANSWER 3979

FLEMING RIGHT TIME 007X
FLEMING 309 MISS ELBA
FLEMING 119 MISS ELBA

SITZ TOP GAME 561X
JMB EMULOTA 013
JMB EMULOTA 013
FROSTY ELBA LIZZY 1106

HYLINE RIGHT TIME 338
FLEMING 6100
FLEMING 912 TRAVELER
FLEMING 932 MISS ELBA

EPD's CE: 4 BW: 1.3 WWT: 68 YWT: 119 MILK: 29

- Schiefelbein Attractive sons are highly sought after because they are performance-oriented bulls with added shape & dimension.
- 306 follows type as he is thick topped, deep bodied with a great quarter.
- He is clean fronted, free moving and really strides out - he will get your pastures covered.



KESSLERS COMMODORE 6516- SIRE

308 FLEMING *Commodore* 308L

#2344373 | BD: 19-Jan-23 | Tattoo: FSF 308L | POLLED

BW: 74 | ActWW: 656 | Feb 19/24 WT: 1205 | AOD: 6

CONNELY COMRADE 1385
KESSLERS COMMODORE 6516
KESSLERS RAINBOW 0595

HARB STUR-D 191 JH
FLEMING 715 DUCHESS
FLEMING 242 DUCHESS

CONNELY CONSENSUS 7229
HAPPY GEE OF CONANGA 919
SUMMITCREST COMPLETE 1P55
KESSLERS RAINBOW 3043

LEACHMAN RIGHT TIME
H A R B BLACK LADY 073 J H
FLEMING 912 TRAVELER
FLEMING 556 DUCHESS

EPD's CE: 9 BW: -1.2 WWT: 54 YWT: 96 MILK: 26

- He is a total outcross pedigree with calving ease in his pedigree with Commodore & HARB Stur-D.
- Note the birth weight on this bull.
- 308 is masculine with great neck extension and is smooth made.
- He is out of a HARB Stur-D daughter, which are noted to be feminine, super uddered and structurally correct.
- Maternal brother sold to Groenenboom Farms.



DMM INTERNATIONAL 54D- SIRE

313 FLEMING *International* 313L

#2344374 | BD: 21-Jan-23 | Tattoo: FSF 313L | POLLED

BW: 92 | ActWW: 705 | Feb 19/24 WT: 1271 | AOD: 6

S A V INTERNATIONAL 2020
DMM INTERNATIONAL 54D
DMM BLACKBIRD 105A

HARB STUR-D 191 JH
FLEMING 732 ERICA
FLEMING 405 ERICA

S A V HARVESTOR 0338
S A V EMBLYNETTE 5483
GUMBO GULCH CREED 94S
SOUTHERN OX BLACKBIRD 12J

LEACHMAN RIGHT TIME
H A R B BLACK LADY 073 J H
FLEMING 508 RANGER SMITH
FLEMING 925 ERICA

EPD's CE: -1 BW: 4.6 WWT: 56 YWT: 90 MILK: 29

- Here is a bull who is free moving and is looking for a summer job!!
- Like his sire he is long, wide topped, clean fronted with great neck extension and a great quarter.
- His sire DMM International 54D is an Agribition Supreme Champion and an All-Breeds Champion of the World.
- International 54D is a bull that puts it all together, who is correct in his movement and makeup with exceptional muscle, depth of body and yet soft made. His dam is another HARB Stur-D daughter hard at work.
- Maternal brother is working the range at Don & Donna Mowat's



DMM CRANK 13E - SIRE

314 RJL *Crank* 314L

#2352915 | BD: 21-JAN-23 | Tattoo: RJL 314L | POLLED

BW: 86 | ActWW: 721 | Feb 19/24 WT: 1294 | AOD: 6

EPD's CE: -1.5 BW: 4.3 WWT: 54 YWT: 107 MILK: 23

74-51 SUDDEN LOOK 1023
DMM CRANK 13E
DMM MISS ESSENCE 14Y

JINDRA DOUBLE VISION
RJL ANNIE K-DV 728E
FLEMING 821 ANNIE K

B C LOOKOUT 7024
EXG LUCY P061 R3
GUMBO GULCH CREED 94S
DMM MISS ESSENCE 37T

CONNELLY REFLECTION
HOFF RACHEL 8312 405
DEER RIVER PROFIT 107S
FLEMING 562 ANNIE K

- Here is a Crank son that is clean fronted and smooth made.
- This bull carries muscle throughout with a strong topline and is deep flanked.
- DMM Crank brings mass & structural correctness to this mating.

319 FLEMING *Attractive* 319L

#2344375 | BD: 25-Jan-23 | Tattoo: FSF 319L | POLLED

BW: 76 | ActWW: 740 | Feb 19/24 WT: 1226 | AOD: 8

JMB TRACTION 292
SCHIEFELBEIN ATTRACTIVE 4565
FROSTY ANSWER 3979

FLEMING RIGHT TIME 007X
FLEMING 530 ZARA
66 ZARA 291A

SITZ TOP GAME 561X
JMB EMULOTA 013
JMB EMULOTA 013
FROSTY ELBA LIZZY 1106

HYLINE RIGHT TIME 338
FLEMING 6100
HIGH VALLEY 4C6 AMBUSH
DEER RIVER ZARA 119R

EPD's CE: 6 BW: 0.7 WWT: 65 YWT: 111 MILK: 27



- A Schiefelbein Attractive son that is long bodied with a smooth profile.
- He is correct in his lines, clean fronted and has great neck extension.
- His sire is noted for calving ease. Have a look at the 76 lb birth weight on 319L.
- Evaluate his weaning weight, performance is in his genetics with the Zara cow family & Attractive.



KESSLERS COMMODORE 6516 - SIRE OF LOTS 320-333

320 FLEMING *Commodore* 320L

PENDING | BD: 27-Jan-23 | Tattoo: FSF 320L | POLLED

BW: 74 | ActWW: 699 | Feb 19/24 WT: 1195 | AOD: 3

CONNEALY COMRADE 1385
KESSLERS COMMODORE 6516
 KESSLERS RAINBOW 0595

DMM CRANK 13E
FLEMING 010 ESSENCE OF CRANK
 FLEMING 403 IRISH ESSENCE

CONNEALY CONSENSUS 7229
 HAPPY GEE OF CONANGA 919
 SUMMITCREST COMPLETE 1P55
 KESSLERS RAINBOW 3043

74-51 SUDDEN LOOK 1023
 DMM MISS ESSENCE 14Y
 VIN-MAR O'REILLY FACTOR
 FLEMING 920 MISS ESSENCE

EPD's CE: - BW: - WWT: - YWT: - MILK: -

- Here is a bull that is packed full of performance with lots of mass and muscle.
- A light birth weight with explosive growth.
- This Commodore son is long, thick and deep.
- As well he is clean fronted, with long neck extension and is free moving.



321 FLEMING *Commodore* 321L

PENDING | BD: 27-JAN-23 | Tattoo: FSF 321L | POLLED

BW: 72 | ActWW: 601 | Feb 19/24 WT: 1325 | AOD: 2

EPD's CE: - BW: - WWT: - YWT: - MILK: -

CONNEALY COMRADE 1385
KESSLERS COMMODORE 6516
 KESSLERS RAINBOW 0595

MAR CAPITALIST 474
FLEMING 141 FLORA
 FLEMING 730 FLORA

CONNEALY CONSENSUS 7229
 HAPPY GEE OF CONANGA 919
 SUMMITCREST COMPLETE 1P55
 KESSLERS RAINBOW 3043

CONNEALY CAPITALIST 028
 CAR MISS AMY 591
 FLEMING 456 RITO PLUS
 FLEMING 736 FLORA

- Here is a proud looking bull that checks all the boxes.
- If you want to push the scale down on your calves at weaning time, have a look!
- He is thick made with a wide top, with a tremendous hip and quarter.
- 321 is out of a first calf heifer, he has a light birth weight with robust performance.

328 FLEMING *Commodore* 328L

PENDING | BD: 31-Jan-23 | Tattoo: COOP 328L | POLLED

BW: 86 | ActWW: 678 | Feb 19/24 WT: 1257 | AOD: 2

CONNEALY COMRADE 1385
KESSLERS COMMODORE 6516
 KESSLERS RAINBOW 0595

CONNEALY SPUR
FLEMING 117 LASS
 FLEMING 845 LASS

CONNEALY CONSENSUS 7229
 HAPPY GEE OF CONANGA 919
 SUMMITCREST COMPLETE 1P55
 KESSLERS RAINBOW 3043

CONNEALY STIMULUS 8419
 JAZZA OF CONANGA 8594
 FF BLACK GOLD JF C19
 FLEMING 436 LASS

EPD's CE: - BW: - WWT: - YWT: - MILK: -

- Here is a complete package of length, depth, width with a tremendous quarter.
- A moderate birth weight bull out of a first calf heifer who is a great milking Spur daughter.
- His only flaw is that he has a bent ear from an infection as a calf, this will not effect his libido!!



330 FLEMING *Commodore* 330L

PENDING | BD: 02-Feb-23 | Tattoo: COOP 330L | POLLED

BW: 82 | ActWW: 688 | Feb 19/24 WT: 1269 | AOD: 2

CONNEALY COMRADE 1385
KESSLERS COMMODORE 6516
 KESSLERS RAINBOW 0595

DMM INTERNATIONAL 54D
FLEMING 131 LEDA
 FLEMING 578 LEDA

CONNEALY CONSENSUS 7229
 HAPPY GEE OF CONANGA 919
 SUMMITCREST COMPLETE 1P55
 KESSLERS RAINBOW 3043

S A V INTERNATIONAL 2020
 DMM BLACKBIRD 105A
 FF WINDY Z43
 FLEMING 240 LEDA

EPD's CE: - BW: - WWT: - YWT: - MILK: -

- A Commodore son that is free moving, youthful and athletic.
- A moderate birth weight bull with great neck extension and out of a first calf DMM International daughter.
- He has performance and growth in his genes; exhibiting a deep flank, big quarter, length of spine and a strong topline.



332 RJL *Commodore* 332L

PENDING | BD: 02-Feb-23 | Tattoo: RJL 332L | POLLED

BW: 90 | ActWW: 769 | Feb 19/24 WT: 1394 | AOD: 4

CONNEALY COMRADE 1385
KESSLERS COMMODORE 6516
 KESSLERS RAINBOW 0595

JINDRA DOUBLE VISION
RJL MAUREEN DV 906G
 FLEMING 203 MAUREEN

CONNEALY CONSENSUS 7229
 HAPPY GEE OF CONANGA 919
 SUMMITCREST COMPLETE 1P55
 KESSLERS RAINBOW 3043

CONNEALY REFLECTION
 HOFF RACHEL 8312 405
 WAVY FAME 13H
 FLEMING 921 JENA

EPD's CE: - BW: - WWT: - YWT: - MILK: -

- A Commodore son out of a Double Vision daughter that is packed full of performance.
- A masculine bull that is extremely long bodied with a strong topline.
- This free moving rascal will cover the range in search of females!





333 FLEMING *Commodore* 333L

PENDING | BD: 03-FEB-23 | Tattoo: COOP 333L | POLLED

BW: 82 | ActWW: 649 | Feb 19/24 WT: 1241 | AOD: 3

CONNEALY COMRADE 1385
KESSLERS COMMODORE 6516
 KESSLERS RAINBOW 0595

MERIT CHIEF 6059D
FLEMING 065 LEDA
 FLEMING 240 LEDA

CONNEALY CONSENSUS 7229
 HAPPY GEE OF CONANGA 919
 SUMMITCREST COMPLETE 1P55
 KESSLERS RAINBOW 3043

BAR S RANGE BOSS 4002
 MERIT PRIDE 8659
 FLEMING 912 TRAVELER
 FLEMING 108 LEDA

EPD's CE: - BW: - WWT: - YWT: - MILK: -

- Here is an eye appealing Commodore son out of a hard-working Merit Chief daughter.
- Out of same Leda cow family as COOP 330L - with proven dependable genetics.
- A structurally sound bull that strides out, he is free moving with a good big hoof.
- This bull is well built; with a thick top, a deep flank and super testicle development!!



340 FLEMING *Spur* 340L

#2344376 | BD: 19-Feb-23 | Tattoo: FSF 340L | POLLED

BW: 100 | ActWW: 693 | Feb 19/24 WT: 1346 | AOD: 5

CONNEALY SPUR
FLEMING 947 SPUR
 FLEMING 219 KRISTEY

FLEMING 315 EQUATOR
FLEMING 830 ESSENCE
 FLEMING 426 ESSENCE OF HERO

CONNEALY STIMULUS 8419
 JAZZA OF CONANGA 8594
 FLEMING RIGHT TIME 007X
 FLEMING 011 KRISTEY

PAPA EQUATOR 2928
 FLEMING 921 JENA
 CRESCENT CREEK RR HERO 154L
 FLEMING 056 KIRBY

EPD's CE: -10 BW: 6.8 WWT: 59 YWT: 101 MILK: 28

- A Spur grandson that is packed full of performance that will make a great cow bull.
- He is masculine with lots of eye appeal, smooth made with clean lines and is tight sheathed.
- Take a look at his depth of body, thick top and big quarter!
- An athletic free moving bull to get your cows covered!!



FELMING 947 SPUR - SIRE



Thank You
**TO OUR VALUED
 CUSTOMERS, FRIENDS
 AND NEIGHBOURS**

348 FLEMING *Perseverance* 348L

#2344380 | BD: 02-Mar-23 | Tattoo: FSF 348L | POLLED

BW: 92 | ActWW: 626 | Feb 19/24 WT: 1195 | AOD: 2

LORENZ ENDURANCE 10F
C.D. PERSEVERANCE 463J
C.D. LUCY 413E

EASTONDALE ENDURANCE 8215
LORENZ FAIRLASS 36D
LORENZ UNIFIED 17C
C.D. LUCY 409C

CONNEALY SPUR
FLEMING 134 ESSENCE
FLEMING 830 ESSENCE

CONNEALY STIMULUS 8419
JAZZA OF CONANGA 8594
FLEMING 315 EQUATOR
FLEMING 426 ESSENCE OF HERO

EPD's CE: -6 BW: 5.5 WWT: 61 YWT: 111 MILK: 30

- Out of a first calf Spur daughter & the Essence cow family - strong longevity genetics.
- This bull is smooth shouldered, clean fronted with a nice Angus head.
- 348 is thick topped with a square butt end - he is packed full of muscle!!



C.D. PERSEVERANCE 463J - SIRE

350 FLEMING *Range Boss* 350L

#2344377 | BD: 07-Mar-23 | Tattoo: FSF 350L | POLLED

BW: 68 | ActWW: 590 | Feb 19/24 WT: 1140 | AOD: 8

BAR S RANGE BOSS 4002
MERIT CHIEF 6059D
MERIT PRIDE 8659

BAR S RANGE BOSS 1118
BAR S PRIDE 0073
DWAJO DUTCH 65P
MERIT PRIDE 4189

FLEMING RIGHT TIME 007X
FLEMING 515 ELORA
FLEMING 327 ELORA

HYLINE RIGHT TIME 338
FLEMING 6100
FLEMING 912 TRAVELER
FLEMING MISS FLORA 003X

EPD's CE: 10 BW: -1.2 WWT: 45 YWT: 77 MILK: 24

- This is the youngest bull in the offering who is an eye-catching lad with a real cool look to him.
- Here is a light birth weight bull with a good quarter and strong muscle expression.
- 350 is clean fronted with good neck extension.



MERIT CHIEF 6059D - SIRE

Cattle Vids

LIVESTOCK VIDEO PRODUCTION SERVICES
BIG SCREEN VIDEO SALE SERVICES

MARKETING AGENTS FOR
DLMS INTERNET BROADCAST SERVICES

FOR COMPLETE INFO CONTACT:
MARK SHOLOGAN 780-699-5082
JOANNE SHOLOGAN 780-689-6068

CAN'T MAKE THE SALE?

Watch, Bid & Buy Online

To view & bid visit www.dlms.ca, log-in with your username and password or sign-up for your free user account.

BIDDERS - click BUYER APPROVAL tab, select the sale you are interested in bidding at and click sign up.

For more information call:

Mark Shologan 780-699-5082 or Purebred Team 780-991-3025

DLMS
www.dlms.ca
Direct Livestock Marketing Systems

CANADA'S ONLINE SEEDSTOCK SOURCE.



RJL UPPER CUT 202Z - SIRE OF LOTS 6L, 21L, 27L, 35L

6L FSF *Upper Cut* 6L

#1455270 | BD: 22-Jan-23 | Tattoo: FSF 6L | POLLED

BW: 80 | ActWW: 698 | Feb 19/24 WT: 1217 | AOD: 10

KN MR NLC UPGRADE U8676
RJL UPPER CUT 202Z
 DOUBLE BAR D BLACKBIRD22N

MRL 98Y
MS BLACK 1A
 MISS RED 21P

ELLINGSON LEGACY M229
 MS NLC MOJO S6119 B
 DRIFTING "M" LP 59L
 TSS BLACKBIRD 08K

WHEATLAND PREDATOR 922W
 IPU MS BEEF 98P
 OMF LONG CUT J6
 HR- MS RED 12M

EPD's CE: 11.8 BW: -0.3 WWT: 62.9 YWT: 87.2 MILK: 18.4

- A solid black purebred with a small scur he is packed full of muscle with a big hip.
- He has an 80 lb birth weight and is clean fronted with long neck extension.
- 6L is a tight sheathed bull who is strong topped and has a clean underline.



W/C WIDE TRACK 694Y - SIRE OF LOTS 7L, 14L

7L FSF *Wide Track* JCF 7L

#1454652 | BD: 23-Jan-23 | Tattoo: FSF 7L | POLLED

BW: 108 | ActWW: 789 | Feb 19/24 WT: 1394 | AOD: 7

W/C RIGHT TRACK W9462
W/C WIDE TRACK 694Y
 MISS WERNING 694S

RJL UPPER CUT 202Z
FSF 626 SOFT TOUCH JCF
 FSF 465 SOFT TOUCH

HRM RIGHT ON T08
 3C STEVIE S6509 B
 PVF-SSH 1L10 LIBERTY
 MISS WERNING 294M

MR NLC UPGRADE U8676
 DOUBLE BAR D BLACKBIRD22N
 REMINGTON UNANIMOUS 736Y
 ANAN ANGUS/ANGUS

EPD's CE: 6.8 BW: 4.2 WWT: 66.5 YWT: 102.8 MILK: 15.5

- Cooper's bull is a black polled 28/32 percentage bull with lots of eye appeal.
- A long-bodied bull with great neck extension and tight shoulders.
- His sire W/C Wide Track is noted for performance, creating bulls with muscle & mass.



14L FSF *Wide Track* 14L

#1454658 | BD: 26-Jan-23 | Tattoo: FSF 14L | POLLED

BW: 92 | ActWW: 721 | Feb 19/24 WT: 1318 | AOD: 5

W/C RIGHT TRACK W9462
W/C WIDE TRACK 694Y
 MISS WERNING 694S

SPRINGCREEK OLYMPIAN 66A
FSF MS BLACK 10F
 MS BLACK 1A

HRM RIGHT ON T08
 3C STEVIE S6509 B
 PVF-SSH 1L10 LIBERTY
 MISS WERNING 294M

SPRINGCREEK ALL IN 155Y
 SPRINGCREEK LINNE 33R
 MRL 98Y
 MISS RED 21P

EPD's CE: 8.9 BW: 2.7 WWT: 70.2 YWT: 103.1 MILK: 16.1

- A blaze faced polled purebred with dark pigmented big testicles.
- He is a smooth made bull with a strong wide top with a moderate birth weight.
- You can appreciate his clean front end and his long neck extension.

21L FSF *Upper Cut* 21L

#1454647 | BD: 03-Feb-23 | Tattoo: FSF 21L | POLLED

BW: 90 | ActWW: 790 | Feb 19/24 WT: 1410 | AOD: 8

KN MR NLC UPGRADE U8676
RJL UPPER CUT 202Z
 DOUBLE BAR D BLACKBIRD22N

HRD SHAZ 16A
RMVH MISS SPADE 16C
 MS BLACK 2Y

ELLINGSON LEGACY M229
 MS NLC MOJO S6119 B
 DRIFTING "M" LP 59L
 TSS BLACKBIRD 08K

TYMARC SHAZAM 113Y
 HRD SKY DOG 19R
 KN LRS RED REALITY 33J
 MISS PRECISION 53S

EPD's | CE: 11.2 | BW: 1 | WWT: 72.3 | YWT: 112.8 | MILK: 21.6

- A blaze faced polled purebred that is long bodied with a strong top.
- He has a moderate birth weight of 90 lbs and is clean fronted with long neck extension.
- 21L is a striking standout in the pen.
- Maternal brother sold to Mowat Ranch.
- His full brother sold to South Ridge Simmentals.



27L FSF *Upper Cut* 27L

#1455257 | BD: 06-Feb-23 | Tattoo: FSF 27L | POLLED

BW: 80 | ActWW: 685 | Feb 19/24 WT: 1230 | AOD: 2

KN MR NLC UPGRADE U8676
RJL UPPER CUT 202Z
 DOUBLE BAR D BLACKBIRD22N

FELT LAST CALL 304F
FSF 68B MISS RED 26J
 MISS RED 68B

ELLINGSON LEGACY M229
 MS NLC MOJO S6119 B
 DRIFTING "M" LP 59L
 TSS BLACKBIRD 08K

W/C BANKROLL 811D
 FELT SADIE 304C
 MRL 98Y
 MS BLACK 56X

EPD's | CE: 7 | BW: 1.6 | WWT: 66.9 | YWT: 93.3 | MILK: 19.3

- Here is a bull that struts his stuff with an attractive profile.
- An 80lb bull out of a first calf heifer.
- This bull is strong topped with a big hip and a square butt end.
- We are still using his sire RJL 202Z on heifers in our AI program, with no calving problems.



CHINOOK
 JUNIOR
 STOCK SHOW

Please join us on
APRIL 3, 2024
 for this year's show at the
CLARESHOLM AGRI-PLEX



FSF BLACK JOKER 3G - SIRE

28L FSF *Blk Joker* 28L

#1454653 | BD: 06-Feb-23 | Tattoo: FSF 28L | POLLED

BW: 98 | ActWW: 866 | Feb 19/24 WT: 1567 | AOD: 7

EPD's CE: 6.9 BW: 4.1 WWT: 83.6 YWT: 121.5 MILK: 25.7

PVF-BF BF26 BLACK JOKER
FSF BLACK JOKER 3G
 CROSSROAD AGAYLA 450A

TNT GUNNER N208
FSF 629 MARIAH
 FSF 477 SOFT TOUCH

HARTS BLACK CASINO B408
 PVF-BF MABELLE C131
 SPRINGCREEK ALL IN 155Y
 CROSSROAD X-SIS 208X

RC STINGER 072K
 TNT MISS HONEY L9
 REMINGTON UNANIMOUS 736Y
 FSF 201 PROFESSIONALGRADE

- A powerful meat machine with a big hip that has a strong wide top.
- This bull has lots of eye appeal and is worthy of a second look.
- He has a moderate birth weight and is clean fronted with long neck extension.
- Maternal brothers have sold to Livingston Colony in 2019 and 2021.
- Dependable genetics built into his pedigree!



Junior Show Purchases FSF & RJL GENETICS IN ACTION



29L FSF *Red Caesar* 29L

#1454651 | BD: 07-FEB-23 | Tattoo: FSF 29L | POLLED

BW: 88 | ActWW: 845 | Feb 19/24 WT: 1520 | AOD: 8 | EPD's CE: 8.6 BW: 2.3 WWT: 84.7 YWT: 123.6 MILK: 26.6

BOZ REDCOAT
ANKONIAN RED CAESAR
 GFI CANDACE G51

SS/PRS HIGH VOLTAGE 244X
RJL RED BIRD 519C
 DOUBLE BAR D BLACKBIRD22N

HERCULES 538P
 BOZ RED LADY
 GW SOLID FLECK
 GFI DELTA DAWN D123

HTP/SVF DURACELL T52
 KENCO MILEY COTTONTAIL
 DRIFTING "M" LP 59L
 TSS BLACKBIRD 08K

- Here are some old proven genetics
- He is good and is a standout in the pen!
- A solid red purebred with lots of hair!!
- An 88 lb birth weight and a tremendous weaning weight.
- He is a meat machine that is thick made, deep bodied with a square hip.
- A maternal brother sold to Jesse Starling.

35L FSF *Upper Cut* 35L

#1455264 | BD: 13-Feb-23 | Tattoo: FSF 35L | POLLED

BW: 100 | ActWW: 624 | Feb 19/24 WT: 1296 | AOD: 2

KN MR NLC UPGRADE U8676
RJL UPPER CUT 202Z
 DOUBLE BAR D BLACKBIRD22N

BOUNDARY ASTUTE 4C
FSF 307A CHERRY BOMB 29J
 RJL CHERRY BOMB 307A

ELLINGSON LEGACY M229
 MS NLC MOJO S6119 B
 DRIFTING "M" LP 59L
 TSS BLACKBIRD 08K

CDI AUTHORITY 77X
 KIMLAKE MARIE 840U
 TNT GUNNER N208
 FSF CHERRY BLOSSOM 901W



EPD's CE: 10.1 BW: 2.7 WWT: 64.7 YWT: 95.4 MILK: 14.4

- A black blaze faced polled purebred with eye appeal.
- A moderate birth weight out of a first calf heifer.
- He is tight sheathed and smooth made in his lines.
- This fellow is a meat machine that is thick topped with a great hip on him

CHAROLAIS

As Justin and I started to write the footnotes on the Charolais bulls, we decided that this group of bulls are like peas in a pod. All but one of the Charolais bulls are out of ONL PROJECT WHISKEY 23H (aka Buddy) are stamped the same way. They are smooth shouldered, thick made, solid built, with an excellent hoof & foot structure and like their sire they are super docile. Just some variance in their overall size and weight. We couldn't be happier with the development of these bulls and the calves that "Buddy" has previously sired.



ONL PROJECT WHISKY 23H - SIRE OF LOTS 5L, 33L, 44L, 53L, 58L

5L RJLF *Whiskey* 5L

#MC871489 | BD: 20-Jan-23 | Tattoo: RJLF 5L | POLLED

BW: 80 | ActWW: 725 | Feb 19/24 WT: 1270 | AOD: 6

KCM SPECTACULAR BID 240Z
ONL PROJECT WHISKEY 23H
RPJ MISS TRIM 298Z

KEYS ALL STATE 149X
RJLF MONIQUE 3E
GCP MONIQUE 29X

JWX ALEJANDRO 630X
KCM JEWEL 927W
JWX SILVER BULLET 524W
RPJ MISS TRIM 72X

KEYS SPECIALIST 18U
MISS KEY MEG 2T
GERRARD MONTEZUMA 6T
GCP RIVER LADY 10T

EPD's CE: 9.1 BW: -1.6 WWT: 56 YWT: 100 MILK: 17



11L RJLF *Whiskey* 11L

#MC8714688 | BD: 26-JAN-23 | Tattoo: RJLF 11L | POLLED

BW: 106 | ActWW: 784 | Feb 19/24 WT: 1508 | AOD: 7

EPD's CE: 0.6 BW: 3.1 WWT: 60 YWT: 105 MILK: 21

KCM SPECTACULAR BID 240Z
ONL PROJECT WHISKEY 23H
RPJ MISS TRIM 298Z

GERRARD MONTEZUMA 6T
RJLF RIVER LADY 19D
GCP RIVER LADY 10T

JWX ALEJANDRO 630X
KCM JEWEL 927W
JWX SILVER BULLET 524W
RPJ MISS TRIM 72X

SVY FREEDOM PLD 307N
GERRARD ROXANNE 18P
PCC YELLOWSTONE 405P
GCP RIVER LADY 19H



25L RJLF *Pitt Satty* 25L

#MC871503 | BD: 05-Feb-23 | Tattoo: PITT 25L | POLLED

BW: 94 | ActWW: 663 | Feb 19/24 WT: 1296 | AOD: 2

EPD's CE: 1.0 BW: 0.3 WWT: 59 YWT: 109 MILK: 23

CEDARDALE TYRANT 31T
CEDARDALE ZEAL 125Z
 CEDARDALE MISS 64T

DBAR SURVIVOR 220M
 CEDARDALE MEMORABLE 19M
 HFCC CALYPSO 1N
 CEDARDALE PROSPECT 5P

LT AFFINITY 6221 PLD
RJLF 280D MISS SCARLETT 5J
 STEPLER MISS 280D

LT RUSHMORE 8060 PLD
 LT ATHENA 1247
 HBSF ZORRO 1Z
 STEPLER MISS 280U

33L RJLF *Whiskey* 33L

#MC871506 | BD: 10-Feb-23 | Tattoo: RJLF 33L | POLLED

BW: 90 | ActWW: 672 | Feb 19/24 WT: 1235 | AOD: 3

KCM SPECTACULAR BID 240Z
ONL PROJECT WHISKEY 23H
 RPJ MISS TRIM 298Z

JWX ALEJANDRO 630X
 KCM JEWEL 927W
 JWX SILVER BULLET 524W
 RPJ MISS TRIM 72X

LT AFFINITY 6221 PLD
RJLF RIVER LADY 9H
 GCP RIVER LADY 10W

LT RUSHMORE 8060 PLD
 LT ATHENA 1247
 PCC YELLOWSTONE 405P
 GCP MONBO NUMBER FIVE 1K

EPD's CE: 11.3 BW: -1.5 WWT: 55 YWT: 101 MILK: 26





44L RJLF *Whiskey* 44L

#MC871483 | BD: 20-Feb-23 | Tattoo: RJLF 44L | POLLED

BW: 96 | ActWW: 720 | Feb 19/24 WT: 1304 | AOD: 9

KCM SPECTACULAR BID 240Z
ONL PROJECT WHISKEY 23H
RPJ MISS TRIM 298Z

HBSF YOGI BERRA 31Y
GCP RIVER LADY 7B
GCP RIVER LADY 27Z

JWX ALEJANDRO 630X
KCM JEWEL 927W
JWX SILVER BULLET 524W
RPJ MISS TRIM 72X

WINN MANS ESPERENZA 835U
HIGH BLUFF TWINKLE 11T
GERRARD MONTEZUMA 6T
GCP RIVER LADY 20P

EPD's CE: 6.3 BW: 0.9 WWT: 63 YWT: 109 MILK: 28



53L RJLF *Whiskey* 53L

#MC871497 | BD: 07-Mar-23 | Tattoo: RJLF 53L | POLLED

BW: 84 | ActWW: 585 | Feb 19/24 WT: 1165 | AOD: 3

KCM SPECTACULAR BID 240Z
ONL PROJECT WHISKEY 23H
RPJ MISS TRIM 298Z

LT AFFINITY 6221 PLD
RJLF MONIQUE 10H
GCP MONIQUE 29X

JWX ALEJANDRO 630X
KCM JEWEL 927W
JWX SILVER BULLET 524W
RPJ MISS TRIM 72X

LT RUSHMORE 8060 PLD
LT ATHENA 1247
GERRARD MONTEZUMA 6T
GCP RIVER LADY 10T

EPD's CE: 11.1 BW: -1.7 WWT: 54 YWT: 100 MILK: 26



58L PITT *Sir Whiskey* 58L

#MC871501 | BD: 26-Mar-23 | Tattoo: PITT 58L | POLLED

BW: 96 | ActWW: 547 | Feb 19/24 WT: 1050 | AOD: 3

KCM SPECTACULAR BID 240Z
ONL PROJECT WHISKEY 23H
RPJ MISS TRIM 298Z

EC NO DOUBT 2022P
RJLF MISS SCARLETT 6H
RJLF MISS SCARLETT 9F

JWX ALEJANDRO 630X
KCM JEWEL 927W
JWX SILVER BULLET 524W
RPJ MISS TRIM 72X

M6 GRID MAKER 104 PET
EC LADY DUKE 2022P
CEDARDALE ZEAL 125Z
STEPLER MISS 280D

EPD's CE: 4.2 BW: 1.5 WWT: 58 YWT: 114 MILK: 24

TERMS AND CONDITIONS

TERMS OF SALE: The terms of the sale are cash or cheque, payable at par at the sale location. The release of livestock will not be given until satisfactory settlement has been made. We reserve the right to withhold animals from shipment for which payments have not been received prior to departure time.

BIDS: Every animal entering the sale ring will be sold to the highest bidder.

DISPUTES: In case of disputes, bidding will be opened between the parties involved. If no further bid is made, the buyer will be the person from whom the auctioneer accepted the last bid. The auctioneer's decision in such matters will be final.

ANNOUNCEMENTS: Errors discovered in the catalog will be corrected by announcement from the Auction Stand at sale time and such corrections will take precedence over printed material in the catalog.

PURCHASER'S RISK & BULL INSURANCE: Ownership risk to the purchaser commences when the Auctioneer's gavel falls. Livestock coverage will be available at the clerk's desk from our appointed representative on Sale Day.

BREEDING GUARANTEE: We guarantee to provide you with a sound breeding bull, capable of passing a breeding soundness evaluation performed by a licensed veterinarian. In the event of any unlikely dispute, the regular terms and conditions that are standard with the Canadian Angus, Canadian Simmental and Canadian Charolais Associations shall apply. Customer satisfaction is paramount to us.

FERTILITY: All bulls will pass a complete breeding soundness evaluation, including a semen test prior to the sale. All bulls will meet or exceed breed standards.

SHIPPING INSTRUCTIONS & DELIVERY OF BULLS: Purchasers are requested to leave shipping instructions when making settlement. Delivery assistance will be given to shipping after the sale, but no risk will be assumed by Foothills Auctioneers Inc. or the sellers. We will strive to deliver the bulls to your corral or to central points when necessary. Delivery will commence mid-April unless prior arrangements have been made with the seller.

POST SALE BULL DEVELOPMENT: Bulls returning to Fleming's will be housed at the buyer's risk. We strongly recommend that all bulls returning to Fleming's be insured. The Sellers will not be responsible for any type of injury while in the seller's care. Therefore, the purchase of mortality insurance is strongly recommended.

CERTIFICATES OF REGISTRY: A certificate of registry will be duly transferred to the buyer by the breeder for each bull after complete and full payment has been made.

CATTLE INSPECTION & IDENTIFICATION: CCIA tags will be in all bulls. The tag number will be the lot number in the catalogue. All bulls will be available for inspection prior to the sale.

ACCIDENTS: Although every precaution will be taken to protect the safety and comfort of the buyers; neither the auction market, sale staff, auctioneer nor any owner assumes any responsibility in this manner and disclaims any liability, legal or otherwise, in the event of an accident or loss of property.

LIABILITY: Foothills Auctioneers Inc. are acting as agents only and assume no responsibility for representations made by the seller. Purchasers must look to the seller for fulfillment of all guarantees and representations made hereunder.

SEMEN COLLECTION: The breeders in the Power Up Your Pasture Bull Sale reserve the right to draw semen on any of the sale bulls for in herd use only. This would be at the buyers convenience and the sellers expense.



5TH GENERATION - LOOKING TO THE FUTURE



• BRING YOUR CATALOG TO THE SALE •

FRIDAY . APRIL 5th 2024. 1:30pm
FOOTHILLS AUCTIONEERS . STAVELY, ALBERTA