

*Fleming Stock Farms & RJ Livestock*

**POWER UP YOUR PASTURE**

*Bull Sale*

- YEARLING ANGUS • YEARLING CHAROLAIS •
- YEARLING BLACK & RED SIMMENTAL •



**Friday. April 4<sup>th</sup> 2025. 1:30 pm**

**Foothills Auctioneers | Stavely, Alberta**

**RJ**  
LIVESTOCK

# Power Up Your Pasture

## Sale Day Information

### Fleming Stock Farms

Home 403-687-2288  
Duncan Fleming 403-625-0427  
Cecilie Fleming 403-625-1124  
flemingstockfarms@gmail.com

### RJ Livestock

Justin Pittman 403-647-4095  
Ricki Fleming 403-625-1606  
rjlivestock13@gmail.com

### Sale Day Contacts

Foothills Auctioneers Ltd 403-549-2120  
Allen "Buck" Thompson 403-994-0828

### Sales Consultant - Castlerock Marketing

Shane Castle 306-741-7485  
Mark Forsyth 306-784-7844

### Auctioneer

Bob Perlich 403-382-7800

### Ringmen

Darcy Moorhead 403-635-0308  
Rob Bergevin 403-489-7653

### Online Bidding - DLMS.ca

If you are unavailable to make it to the sale, online bidding we be available through DLMS

Mark Shologan 780-699-5082

### Stockman's Insurance

Cheryl Brown 403-601-3460

### Photos & Videos- cattlevids.ca

Photos taken February 5, 2025 by Mark Shologan

Videos taken March 2, 2025 by cattlevids.ca

Videos will be posted online in early March

### Catalogue Design

Bar Nineteen Creative

ONLINE BIDDING AVAILABLE

DLMS.ca

**DLMS**  
Direct Livestock Marketing Systems

## Stockman's

## CODE OF DOING BUSINESS

Be honest

Stand up for your industry

Don't change more than you need to

Treat your customers with respect and build relationships

Be thankful for those you have the privilege of doing business with





# Welcome to the 2025 Power Up Your Pasture *Bull Sale*

Thank you for taking the time to view our catalog and the bulls on offer from Fleming Stock Farms & RJ Livestock. We are very pleased with this year's offering of yearling Black Angus, Simmental and Charolais bulls. The bulls are being developed at Duncan & Cecilie's place, 1/2 mile west of the Granum junction of Highways #2 & #519. We encourage and welcome you to stop by any time prior to the sale to preview the bulls.

This year's sale is Friday, April 4, 2025 at Foothills Auctioneers in Stavely, AB at 1:30 PM. We will have DLMS on site to broadcast the sale and take your online bids if you are unable to attend the sale in person. Our sale day contacts have been through the bull pens and can assist you if needed or give us a call to discuss your bull needs.

We are proud of our three-breed offering which gives our customers an opportunity to maximize their options in their breeding programs. I guess you can say we are your, "One Stop Bull Shop". We may not have the largest offering, we pride ourselves in the fertility, udders, confirmation, longevity and docility of our mother cows which in turn rises the cream to the top. At weaning, we cull hard, if a bull does not meet our bull criteria he is culled. As our bulls develop through the winter and into the Spring we continue to analyze with a critical eye and expectations. We believe in quality over quantity. We don't push our bulls for excessive weight gain, we like to develop the bulls for longevity. We know that performance is important but not at the expense of fertility.

Overall herd health is vital in our breeding programs. Our entire herd has been on the Boehringer Ingelheim herd health program for decades and we are one of their Express Verified Purebred Herds. Next to vaccination a solid mineral program is paramount. Our herds are on a year-round mineral program with OLS Mineral tubs. This mineral program offers one of the best mineral packages for beef cattle around without over consumption. Calves also receive a dose of MultiMin90 at birth to give them the best start possible. We strive to maintain our bulls in peak health so they will have the longevity and durability to withstand your breeding seasons and the rugged range conditions that nature provides.

All bulls will be scrotal measured, semen tested and will have passed a breeding soundness evaluation by Dr. Martin Kaatz of the Lethbridge Animal Clinic just prior to our sale. All bulls are fully guaranteed. Our operation is Verified Beef Production + (VBP+) Certified. All the bulls are Express Verified and will have been vaccinated to protect their testicles from infection of the BVD virus. All bulls will have received Express FP and an 8-way vaccination prior to the sale.

We would like to tour you through our Bull Pens. Stop by any time prior to the sale. Feel free to reach out to any of us. We will be happy to assist you with your bull selection and look forward to your attendance at our 2025 Bull Sale.



**Fleming Stock Farms**  
Duncan & Cecilie Fleming  
Cooper Fleming



**RJ Livestock**  
Ricki Fleming, Justin Pittman, Scarlett & Zane



# HERD HEALTH

Maintaining a healthy herd starts with a solid vaccination and mineral program. We have worked closely with Fort Macleod Veterinary Clinic & Lethbridge Animal Clinic to ensure the highest herd health we possibly can.

## CALF HERD HEALTH PROTOCOL

- **BIRTH**  
Inforce 3, MultiMin 90, Toltrazuril
- **SPRING PROCESSING** (approx 3 months)  
Pyramid® 5 + Presponse®, Fermicon 7/Somnugen
- **SUMMER PROCESSING**  
Cyclene (Fly control)
- **WEANING**  
Pyramid® 5 + Presponse®, Fermicon 7/Somnugen, Quiet Wean Nose tags, FerAppease  
Age Verified & Express Verified® + Prime Verified
- **OLS Mineral Free choice year round**

## COW HERD HEALTH PROTOCOL

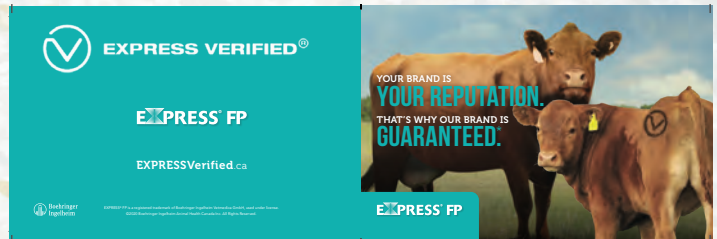
- **PRE-BREEDING**  
Express® FP 5-VL5, Tasvax 8
- **SUMMER**  
Cyclene (Fly control)
- **PRE-CALVING**  
Scourguard 4K/C  
Bred Heifers - Boosted with Scourguard 4K/C
- **WINTER**  
Clean Up II (Lice prevention)

## SALE BULL HERD PROTOCOL

- **PRE-BREEDING**  
Express® FP, Tasvax 8
- **OFF SEASON** (Fall/Winter)  
Solmectin & Clean Up II
- **OLS Mineral Free choice year round**



If you are a Herdtrax user please notify Ricki and we will transfer the record to your account prior to delivery



Fleming Stock Farms & RJ Livestock are Express® FP Verified Seed Stock Producers



VBP+ Certified  
www.verifiedbeef.ca



Certified Sustainable  
crsbcertifiedsustainablebeef.ca



## ORWIG'S LIVESTOCK SUPPLEMENTS

- Made from the VERY BEST products on the market
- Chelated trace mineral package
- All natural plant proteins
- Increases forage digestion by 15-30%
- No chemical hardeners
- Low cost per head - per day
- Healthier immune systems
- Stronger heat signs and stronger breed back
- Better milk production
- Heavier weaning weights

~ DELIVERY AVAILABLE ~

Area OLS Dealers:

**Duncan & Cecilie Fleming - Fleming Stock Farms**  
Granum, Alberta

Office 403-687-2288 • Cell 403-625-0427 • Toll Free 800-565-5288

**LEARN MORE AT WWW.OLSTUBS.COM**

# Jack Fleming

October 5, 1928 - January 29, 2025



Dad  
Grandpa  
Great Grandpa  
Friend  
& *Cattleman*



Often, we don't realize that a moment might be our last with someone,  
assuming there will always be another chance.

We live as if time is limitless, but in reality, it is fleeting.

**Cherish every moment, because sometimes, forever is shorter than we think!**

# FLEMING 921 *Jena*

1999-2017

Behind Every Great  
**HERDBULL**  
is a Powerful,  
**MATERNAL FEMALE**



*Fleming 921 Jena has been the most influential female in our program's history. She was one of those cows that worked with every mating!*

**26 Years of her Influence**

*75% of the Angus bulls in the sale are descendants of Fleming 921 Jena*



**FSF 330N** daughter



**FSF 101Y** daughter



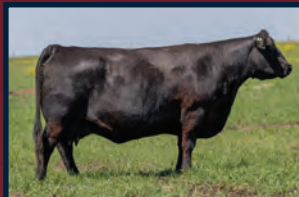
**FSF 225Z** daughter



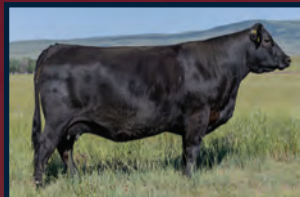
**FSF 443B** daughter



**FSF 569C** great granddaughter



**FSF 630D** daughter



**FSF 810F** granddaughter



**FSF 301L** granddaughter



*Thank you*  
to our valued  
customers, friends,  
and neighbours

**New Junior Herdsire!**



**FLEMING 405** *Executive Decision*

FSF 405M | 2403764 | 12-Jan-24

**BW: 84** | **Act WW: 795** | **Feb 16/25 WT: 1335** | **AOD: 11**

BAR-E-L NATURAL LAW 52Y  
**PM EXECUTIVE DECISION 5'17**  
 PM BLOSSOM 124'13

S A V BISMARCK 5682  
 BAR-E-L MAGNOLIA 143K  
 HF THUNDERBIRD 146Y  
 POPLAR MEADOWS BLOSSOM 5'10

**66 ZARA 291A**  
 DEER RIVER ZARA 119R

PARAMONT AMBUSH 2172  
 HIGH VALLEY GLORIA 1Q2  
 MAR PRECISION PAVING THE WAY  
 DEER RIVER ZARA 56K

**EPDs**    **CE: 4**    **BW: 2.2**    **WW: 46**    **YW: 74**    **MILK: 25**

- A member of the Res Champion Pen of 3 Bulls from the 2024 Medicine Hat Pen Show.
- 405 will be our New Junior Herdsire walking our pastures at Fleming Stock Farms & RJ Livestock.
- With lots of eye appeal, this bull has been a standout since he was a calf.

**Medicine Hat Pen Show 2024** *Reserve Champion Pen of 3 Bulls*



**FLEMING STOCK FARM & RJ LIVESTOCK ANNUAL BULL SALE**



Commodore 6516 sire

## 404 FLEMING 404 *Commodore*

FSF 404M | 2403578 | 10-Jan-24 | Twin

**BW: 72 | Act WW: 864 | Feb 16/25 WT: 1491 | AOD: 9**      **EPDs**    **CE: 4.5    BW: 1.7    WW: 72    YW: 125    MILK: 26**

CONNEALY COMRADE 1385  
**KESSLERS COMMODORE 6516**  
 KESSLERS RAINBOW 0595

CONNEALY CONSENSUS 7229  
 HAPPY GEE OF CONANGA 919  
 SUMMITCREST COMPLETE 1P55  
 KESSLERS RAINBOW 3043

SA V HARVESTOR 0338  
**FLEMING 516 JENA DAISY**  
 FLEMING 101 JENA DAISY

SA V HERITAGE 6295  
 SA V EMBLYNETTE 7749  
 HERO 6267 OF R R 2418  
 FLEMING 921 JENA

- An impressive bull with lots of style and scale busting performance.
- Use any Commodore son to add tremendous body length, big tops and structural soundness.
- A full brother FSF 305L is walking the pastures of Triple Z Farms of Irvine, AB.
- His maternal brother FSF 214K has sired an excellent crop of calves at Freyburn Angus of Oxbow, SK.
- A maternal sister 143J sold to Eastondale Angus of Wawota, SK.



Attractive 4565 sire

## 412 FLEMING 412 *Attractive*

FSF 412M | 2403577 | 15-Jan-24

**BW: 104 | Act WW: 758 | Feb 16/25 WT: 1405 | AOD: 11**

JMB TRACTION 292  
**SCHIEFELBEIN ATTRACTIVE 4565**  
 FROSTY ANSWER 3979

SITZ TOP GAME 561X  
 JMB EMULOTA 013  
 SA V FINAL ANSWER 0035  
 FROSTY ELBA LIZZY 1106

FLEMING RIGHT TIME 007X  
**FLEMING 309 MISS ELBA**  
 FLEMING 119 MISS ELBA

HYLINE RIGHT TIME 338  
 FLEMING 6100  
 FLEMING 912 TRAVELER  
 FLEMING 932 MISS ELBA

**EPDs**    **CE: 4    BW: 1.9    WW: 67    YW: 115    MILK: 28**

- Schiefelbein Attractive 4565 sons are highly sought after because they are performance-oriented bulls with added shape & dimension.
- 412 is free moving bull that has excellent phenotype traits from front to back.
- A full brother is working the pastures of Jerry & Katie Sawley's purchased from our 2024 Bull Sale.
- His dam Fleming 309 has produced 8 bull calves that have consistently risen to the top.



# 413 RJL *Attractive* 413M

RJL 413M | 2403753 | 16-Jan-24

**BW: 80 | Act WW: 728 | Feb 16/25 WT: 1299 | AOD: 3**

JMB TRACTION 292  
**SCHIEFELBEIN ATTRACTIVE 4565**  
 FROSTY ANSWER 3979

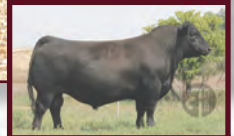
SITZ TOP GAME 561X  
 JMB EMULOTA 013  
 S A V FINAL ANSWER 0035  
 FROSTY ELBA LIZZY 1106

CONNEALY SPUR  
**RJL 305 GEMINI 139J**  
 RJL GEMINI 305A

CONNEALY STIMULUS 8419  
 JAZZA OF CONANGA 8594  
 FLEMING RIGHT TIME 007X  
 FLEMING GEMINI 111Y

**EPDs CE: 2.5 BW: 3.3 WW: 72 YW: 126 MILK: 27**

- An Attractive son that is deep bodied and wide topped with a tremendous quarter.
- This bull is fresh fronted with great neck extension.
- A moderate birthweight bull that is worth an extra look.
- Performance is built into both sides of his pedigree.



**Attractive 4565 sire**



**810 Jena Daisy dam**



**Executive Decision sire**

# 414 FLEMING 414 *Executive*

FSF 414M | 2403759 | 17-Jan-24

**BW: 86 | Act WW: 850 | Feb 16/25 WT: 1443 | AOD: 6**

BAR-E-L NATURAL LAW 52Y  
**PM EXECUTIVE DECISION 5'17**  
 PM BLOSSOM 124'13

S A V BISMARCK 5682  
 BAR-E-L MAGNOLIA 143K  
 HF THUNDERBIRD 146Y  
 POPLAR MEADOWS BLOSSOM 5'10

R B TOUR OF DUTY 177  
**FLEMING 810 JENA DAISY**  
 FLEMING 101 JENA DAISY

WERNER WAR PARTY 2417  
 B A LADY 6807 305  
 HERO 6267 OF R R 2418  
 FLEMING 921 JENA

**EPDs CE: 7 BW: 1 WW: 56 YW: 93 MILK: 28**

- A larger framed Executive Decision bull that is smooth shouldered with excellent neck extension.
- A long-bodied bull that is a meat machine.
- On his dam side he goes back to our never miss herd matriarch Fleming 921 Jena, who was perfect in every way.



Commodore 6516 sire

# 415 FLEMING 415 *Commodore*

COOP 415M | 2403755 | 17-Jan-24

BW: 76 | Act WW: 723 | Feb 16/25 WT: 1310 | AOD: 3 | EPDs | CE: 5 | BW: 1.9 | WW: 69 | YW: 118 | MILK: 29

CONNEALY COMRADE 1385  
**KESSLERS COMMODORE 6516**  
 KESSLERS RAINBOW 0595

CONNEALY CONSENSUS 7229  
 HAPPY GEE OF CONANGA 919  
 SUMMITCREST COMPLETE 1P55  
 KESSLERS RAINBOW 3043

DMM INTERNATIONAL 54D  
**FLEMING 131 LEDA**  
 FLEMING 578 LEDA

SA V INTERNATIONAL 2020  
 DMM BLACKBIRD 105A  
 FF WINDY Z43  
 FLEMING 240 LEDA

- A Commodore son that is free moving, youthful and athletic.
- A moderate birth bull with an attractive smooth made profile.
- He has performance and growth built in his genetics.
- Exhibiting a deep flank, big quarter length of spine and a strong topline.
- A full brother sold to Brian Comstock of Stavely in our 2024 Sale.

# 416 FLEMING 416 *Crank*

FSF 416M | 2403758 | 18-Jan-24

BW: 78 | Act WW: 753 | Feb 16/25 WT: 1288 | AOD: 12

74-51 SUDDEN LOOK 1023  
**DMM CRANK 13E**  
 DMM MISS ESSENCE 14Y

B C LOOKOUT 7024  
 EXG LUCY P061 R3  
 GUMBO GULCH CREED 94S  
 DMM MISS ESSENCE 37T

HYLINE RIGHT TIME 338  
**FLEMING 222 MISS ESSENCE**  
 FLEMING 920 MISS ESSENCE

LEACHMAN RIGHT TIME  
 HYLINE PRIDE 265  
 FLEMING 508 RANGER SMITH  
 FLEMING 146 LILAC

EPDs | CE: -2.5 | BW: 5 | WW: 53 | YW: 96 | MILK: 26

- This Crank son is thick made, tight sheathed and is wide topped.
- His sire has a pedigree that is loaded with performance and power.
- Out of a never miss cow with multiple daughter and granddaughters in the herd.
- A full brother and a maternal brother are at work in the pastures of Roland Sippola in the Foothills west of Nanton, AB.



Crank 13E sire

# 417 RJL Crank 417M

RJL 417M | 2403752 | 18-Jan-24

BW: 86 | Act WW: 757 | Feb 16/25 WT: 1331 | AOD: 7

74-51 SUDDEN LOOK 1023  
**DMM CRANK 13E**  
 DMM MISS ESSENCE 14Y

B C LOOKOUT 7024  
 EXG LUCY P061 R3  
 GUMBO GULCH CREED 94S  
 DMM MISS ESSENCE 37T

JINDRA DOUBLE VISION  
**RJL ANNIE K-DV 728E**  
 FLEMING 821 ANNIE K

CONNELLY REFLECTION  
 HOFF RACHEL 8312 405  
 DEER RIVER PROFIT 107S†  
 FLEMING 562 ANNIE K

EPDs | CE: -1 | BW: 4.1 | WW: 54 | YW: 106 | MILK: 23

- DMM Crank brings mass and structural correctness to this mating.
- Here is a Crank son with a moderate birth weight that is clean fronted and smooth made.
- This bull carries muscle throughout, with a strong topline and a deep flank.
- His full brother sold to Roland Sippola of Nanton, AB in the 2024 Bull Sale.



Crank 13E sire



569 Nina Erica dam



Executive Decision sire

# 418 FLEMING 418 Executive

FSF 418M | 2404844 | 18-Jan-24

BW: 88 | Act WW: 795 | Feb 16/25 WT: 1384 | AOD: 9

BAR-E-L NATURAL LAW 52Y  
**PM EXECUTIVE DECISION 5'17**  
 PM BLOSSOM 124'13

S A V BISMARCK 5682  
 BAR-E-L MAGNOLIA 143K  
 HF THUNDERBIRD 146Y  
 POPLAR MEADOWS BLOSSOM 5'10

FF WINDY Z43  
**FLEMING 569 NINA ERICA**  
 FLEMING 246 NINA ERICA

H A R B WINDY 702 J H  
 FF KARA T13  
 FLEMING 912 TRAVELER  
 FLEMING 354 NINA ERICA

EPDs | CE: | BW: | WW: | YW: | MILK:

- A member of the Res Champion Pen of 3 Bulls from the 2024 Medicine Hat Pen Show.
- Herd Sire Alert!!
- A moderate birth weight bull that is fresh fronted and free moving.
- This Executive son is a no-fault bull with style and performance.
- 418 is worthy of a serious 2nd look.
- Maternal brothers are working the pastures of M&H Ranching of Pincher Creek and Granum Colony.



515 Elora dam



International 54D sire

## 419 FLEMING 419 *International*

FSF 419M | 2396545 | 18-Jan-24

BW: 98 | Act WW: 826 | Feb 16/25 WT: 1298 | AOD: 9

S A V INTERNATIONAL 2020  
DMM INTERNATIONAL 54D  
DMM BLACKBIRD 105A

S A V HARVESTOR 0338  
S A V EMBLYNETTE 5483  
GUMBO GULCH CREED 94S  
SOUTHERN OX BLACKBIRD 12J

FLEMING RIGHT TIME 007X  
FLEMING 515 ELORA  
FLEMING 327 ELORA

HYLINE RIGHT TIME 338  
FLEMING 6100  
FLEMING 912 TRAVELER  
FLEMING MISS FLORA 003X

EPDs CE: 2 BW: 3.3 WW: 60 YW: 96 MILK: 24

- A powerful bull with style and a masculine presence.
- Thick made, long sided, deep from chest floor to flank and has a tremendous quarter.
- A cow maker bull with a ton of strong maternal traits on the dam side of his pedigree.

## 420 FLEMING 420 *Chief*

FSF 420M | 2396547 | 19-Jan-24

BW: 78 | Act WW: 679 | Feb 16/25 WT: 1245 | AOD: 3

BAR S RANGE BOSS 4002  
MERIT CHIEF 6059D  
MERIT PRIDE 8659

BAR S RANGE BOSS 1118  
BAR S PRIDE 0073  
DWAJO DUTCH 65P  
MERIT PRIDE 4189

MAR CAPITALIST 474  
FLEMING 148 JENA DAISY  
FLEMING 810 JENA DAISY

CONNEALY CAPITALIST 028  
CAR MISS AMY 591  
R B TOUR OF DUTY 177  
FLEMING 101 JENA DAISY

EPDs CE: 10 BW: -1 WW: 44 YW: 71 MILK: 26

- His sire Merit Chief 6059D at 9 years old is still sound and walking our pastures.
- Merit Chief 6059D has a big solid foot, is smooth shouldered, long bodied and maintains his condition.
- 420 exhibits the strong traits of his sire with a tidy front end, great neck extension, who is deep bodied with a strong quarter.
- A moderate birth weight bull with longevity bred into both sides of his pedigree.

## 423 FLEMING 423 *Executive*

FSF 423M | 2403576 | 20-Jan-24

BW: 94 | Act WW: 714 | Feb 16/25 WT: 1272 | AOD: 10

BAR-E-L NATURAL LAW 52Y  
PM EXECUTIVE DECISION 5'17  
PM BLOSSOM 124'13

S A V BISMARCK 5682  
BAR-E-L MAGNOLIA 143K  
HF THUNDERBIRD 146Y  
POPLAR MEADOWS BLOSSOM 5'10

N BAR EMULATION EXT  
FLEMING JENA EXT  
FLEMING 921 JENA

EMULATION N BAR 5522  
N BAR PRIMROSE 2424  
TC STOCKMAN 365  
BAR WL LADY 88A

EPDs CE: 3.5 BW: 2.5 WW: 46 YW: 81 MILK: 24

- Another powerhouse Executive Decision son that is packed full of muscle.
- Clean fronted bull with strong Angus characteristics.
- Super powerful pedigree on the maternal side – his dam is a direct daughter of Fleming 912 Jena along with the female makers TC Stockman and N Bar Emulation EXT.
- Keep the heifers out of this bull and your top producing females to build a powerful cow herd that will pay dividends for years to come.



Jena EXT dam



Executive Decision 5'17 sire

# 424 FLEMING 424 *Chief*

FSF 424M | 2396549 | 20-Jan-24

**BW: 102 | Act WW: 719 | Feb 16/25 WT: 1314 | AOD: 4**

BAR S RANGE BOSS 4002  
**MERIT CHIEF 6059D**  
 MERIT PRIDE 8659

BAR S RANGE BOSS 1118  
 BAR S PRIDE 0073  
 DWAJO DUTCH 65P  
 MERIT PRIDE 4189

CONNEALY SPUR  
**FLEMING 036 NINA ERICA**  
 FLEMING 569 NINA ERICA

CONNEALY STIMULUS 8419  
 JAZZA OF CONANGA 8594  
 FF WINDY Z43  
 FLEMING 246 NINA ERICA

**EPDs CE: -1 BW: 4.2 WW: 50 YW: 94 MILK: 23**

- A Merit Chief son out of a Connealy Spur daughter that will put pounds on calves, because pounds matter at weaning time!!
- Performance in his pedigree, both top and bottom – his grand dam is the mother of FSF 418M who is a powerful bull selling in this sale.
- 424 is recommended for cows because of his stellar performance, don't discount this bull because of his birth weight. Appreciate his mass and length.
- He has great neck extension and is clean fronted in his make-up.



**Chief 6059D sire**



**International 54D sire**

# 425 FLEMING 425 *International*

FSF 425M | 2403575 | 21-Jan-24

**BW: 84 | Act WW: 678 | Feb 16/25 WT: 1261 | AOD: 15**

S A V INTERNATIONAL 2020  
**DMM INTERNATIONAL 54D**  
 DMM BLACKBIRD 105A

S A V HARVESTOR 0338  
 S A V EMBLYNETTE 5483  
 GUMBO GULCH CREED 94S  
 SOUTHERN OX BLACKBIRD 12J

GARRISON 8128 DYNAMITE  
**FLEMING 907 MISS DYNA ELBA**  
 FLEMING 358 MISS ELBA

FINKS 5522-6148  
 MISS WIX 204 OF MC CUMBER  
 HIGH VALLEY 4C6 AMBUSH  
 WICKLOW MISS ELBA 65C

**EPDs CE: 3.5 BW: 1.7 WW: 42 YW: 67 MILK: 22**

- This stout International son is the 14th natural calf for his dam Fleming 907, longevity is built into his pedigree.
- A moderate framed bull that is a complete package with an 84 lb. birth weight, appreciate him for his length, width, depth, big hip, clean front end and superb structural soundness.
- Like other International sons, he has eye appeal with a great hair coat.



Houston 3H sire

## 428 FLEMING 428 *Houston*

FSF 428M | 2403757 | 21-Jan-24

BW: 94 | Act WW: 734 | Feb 16/25 WT: 1288 | AOD: 5

ELLINGSON TOP SHELF 5050  
BLJ HOUSTON 3H  
COUNTRY LANE ROYAL LASS 3F

ELLINGSON PLATEAU 1155  
EA EMBLYNETTE 9203  
S A V SENSATION 5615  
RIVERFRONT ROYAL LASS 616D

CCL DATELINE 36R  
FLEMING 941 MISS ELBA  
FLEMING 932 MISS ELBA

VERMILION DATELINE 7078  
WILLABAR PATRICIA 45C  
STRATHMORE WINSTON 51N  
FLEMING 719 GLITTER

EPDs CE: -5.5 BW: 4.7 WW: 64 YW: 115 MILK: 20

- With a strong masculine look, this bull is thick and long with an impressive quarter.
- His grandsire, Ellingson Top Shelf who is noted for calving ease and his smooth front end.
- We used his sire BJJ Houston 3H on our heifers with a 90 lb. birth weight with no problems, but we recommend this bull for cows due to the extra punch of performance on both sides of his pedigree.



Executive Decision 5'17 sire

## 435 FLEMING 435 *Executive*

FSF 435M | 2403574 | 24-Jan-24

BW: 86 | Act WW: 743 | Feb 16/25 WT: 1255 | AOD: 13

BAR-E-L NATURAL LAW 52Y  
PM EXECUTIVE DECISION 5'17  
PM BLOSSOM 124'13

S A V BISMARCK 5682  
BAR-E-L MAGNOLIA 143K  
HF THUNDERBIRD 146Y  
POPLAR MEADOWS BLOSSOM 5'10

HERO 6267 OF R R 2418  
FLEMING 101 JENA DAISY  
FLEMING 921 JENA

RR HERO 6267  
R R EVERELDA ENTENSE 0413  
TC STOCKMAN 365  
BAR WL LADY 88A

EPDs CE: 5.5 BW: 0.9 WW: 49 YW: 81 MILK: 27

- Another elite Executive Decision bull that was our spare for Pen of 3 for the Medicine Hat Pen Show.
- This bull has an excellent profile and is packed full of red meat from front to back.
- 435 has an 86 lb. birth weight and will work well on your females.
- Longevity is bred into this pedigree with his dam being 14 years old and still producing in our herd.
- His dam is a daughter of Hero 6267, a sire that was famous for producing herd sires.



Attractive 4565 sire

## 437 RJL *Attractive* 437M

RJL 437M | 2403750 | 26-Jan-24

BW: 100 | Act WW: 889 | Feb 16/25 WT: 1485 | AOD: 4

JMB TRACTION 292  
SCHIEFELBEIN ATTRACTIVE 4565  
FROSTY ANSWER 3979

SITZ TOP GAME 561X  
JMB EMULOTA 013  
S A V FINAL ANSWER 0035  
FROSTY ELBA LIZZY 1106

MERIT CHIEF 6059D  
RJL EMMA 054H  
GGI EMMA 202Z

BAR S RANGE BOSS 4002  
MERIT PRIDE 8659  
JPD PIONEER 1X  
EXAR EMMA 8810

EPDs CE: 5 BW: 1.9 WW: 70 YW: 122 MILK: 27

- Stout made with muscle & power from front to back.
- A moderate framed lad that is wide topped with lots of style.
- Structurally sound and will be an asset to your bull battery.



## 439 FLEMING 439 *Executive*

FSF 439M | 2403573 | 27-Jan-24

**BW: 94 | Act WW: 810 | Feb 16/25 WT: 1335 | AOD: 12**

BAR-E-L NATURAL LAW 52Y  
**PM EXECUTIVE DECISION 5'17**  
 PM BLOSSOM 124'13

S A V BISMARCK 5682  
 BAR-E-L MAGNOLIA 143K  
 HF THUNDERBIRD 146Y  
 POPLAR MEADOWS BLOSSOM 5'10

GARRISON 8128 DYNAMITE  
**FLEMING 225 JENA DYN**  
 FLEMING 921 JENA

FINKS 5522-6148  
 MISS WIX 204 OF MC CUMBER  
 TC STOCKMAN 365  
 BAR WL LADY 88A

**EPDs | CE: -3.5 | BW: 3.9 | WW: 49 | YW: 86 | MILK: 26**

- A member of the Res Champion Pen of 3 Bulls from the 2024 Medicine Hat Pen Show
- Another Herd Sire Alert!! An outstanding Herd Sire prospect!
- This handsome bull exhibits mass and power from every angle.
- 439 is eye catching with his clean front end, style, thickness, natural muscle & length.
- Out of a 12-year-old dam, he has the blueprint for longevity, soundness & maternal power.

## 442 FLEMING 442 *Houston*

FSF 442M | 2403756 | 03-Feb-24

**BW: 90 | Act WW: 755 | Feb 16/25 WT: 1269 | AOD: 12**

ELLINGSON TOP SHELF 5050  
**BLJ HOUSTON 3H**  
 COUNTRY LANE ROYAL LASS 3F

ELLINGSON PLATEAU 1155  
 EA EMBLYNETTE 9203†  
 S A V SENSATION 5615  
 RIVERFRONT ROYAL LASS 616D†

FLEMING 912 TRAVELER  
**FLEMING 244 NIFTY**  
 FLEMING 345 NIFTY

G D A R TRAVELER 044  
 FLEMING 921 JENA  
 CRESCENT CREEK RR HERO 154L  
 FLEMING 108 LEDA

**EPDs | CE: -3 | BW: 4.2 | WW: 62 | YW: 112 | MILK: 27**

- A pasture proud Houston son that is well put together with exceptional length and a deep rib.
- Tons of capacity and performance built into his pedigree.
- His 12-year-old dam has earned her keep – she's not fancy but brings in a big calf at weaning.
- A clean fronted bull that is smooth shouldered with a 90 lb. birth weight.



Houston 3H sire



Perseverance 463J sire

# 444 FLEMING 444 *Perseverance*

FSF 444M | 2396550 | 09-Feb-24

BW: 102 | Act WW: 889 | Feb 16/25 WT: 1335 | AOD: 2

LORENZ ENDURANCE 10F  
C.D. PERSEVERANCE 463J  
C.D. LUCY 413E

EASTONDALE ENDURANCE 82'15  
LORENZ FAIRLASS 36D  
LORENZ UNIFIED 17C  
C.D. LUCY 409C

KESSLERS COMMODORE 6516  
FLEMING 212 JENA  
FLEMING JENA EXT

CONNELLY COMRADE 1385  
KESSLERS RAINBOW 0595  
N BAR EMULATION EXT  
FLEMING 921 JENA

EPDs CE: -5 BW: 5.1 WW: 67 YW: 120 MILK: 27

- A solid made meat machine with an impressive profile.
- His sire C.D. Perseverance has been used on heifers in our operation
- A big stout bull off a first calf Kessler's Commodore heifer, who is an impressive mom!
- 444 was born unassisted and is built like a long torpedo.

## Tribute to

# Brent Carey



In the Fall of 2023 Brent was not feeling well, then receiving his cancer diagnosis he made the difficult decision to step away from the mic while he navigated tests and treatment options. He suggested Bob Perlich in his absence for our 2024 Bull Sale. It was always our hope and Brent's goal to return to the mic for our 2025 Bull Sale. Now here we are!

As we all know that was not in the Master's plan. Brent fought hard, he took traditional treatments and embraced alternative treatments as well. Brent passed May 9, 2024 surrounded by his loving family. Our families have intertwined for generations. Duncan and Brent were both raised in Hereford families, shared many journeys together and were lifelong friends. Cecile and Peggy met at college and became college roommates while attending Lethbridge Community College. Peggy had a part time job at Perlich Auction where Brent was one of the auctioneers. That is when I met Brent, he started hanging out at our apartment and we shared in a lot of fun and shenanigans.

We gals graduated, Peggy headed for Fort Macleod, I landed a job in Claresholm. Peggy and Brent got married and I met a guy named Duncan and we got married and moved to Granum. Roll ahead 40 plus years; we raised our kids as friends, we played slo-pitch together, socialized together, we shared life's ups and downs together. By far, our biggest joys were welcoming all our grandkids and watching our kids succeed in life. Brent & Cecile served our Beef Industry together, as Directors of Alberta Beef Producers. Brent was always logical and advocated for the grassroots producer.

Duncan was Brent's Uber driver after Brent had major neck surgery in 2016, so Brent could get back to serving his customers. Many miles and acquaintances together, Duncan got to see first-hand how every customer of Brent's and their breeding programs were valued by Brent. He rode for every brand he worked for. Brent had incredible recall for names, events, locations and pedigrees. When traveling Brent knew every short cut, beanery, dinner and accommodation along the many miles. The two of them would share thoughts, bounce ideas off each other and agree to disagree some times.

Brent was our only auctioneer up until he fell ill. We wished it was not this way, but as he would say "the show must go on"! Gone but never forgotten and truly a friend that is really never far away.





Houston 3H sire

# 451 FLEMING 451 *Mr Black*

COOP 451M | 2396551 | 13-Feb-24

BW: 84 | Act WW: 744 | Feb 16/25 WT: 1296 | AOD: 9

EPDs CE: BW: WW: YW: MILK:

ELLINGSON TOP SHELF 5050  
**BLJ HOUSTON 3H**  
 COUNTRY LANE ROYAL LASS 3F

ELLINGSON PLATEAU 1155  
 EA EMBLYNETTE 9203  
 S A V SENSATION 5615  
 RIVERFRONT ROYAL LASS 616D

FF WINDY Z43  
**FLEMING 578 LEDA**  
 FLEMING 240 LEDA

H A R B WINDY 702 J H  
 FF KARA T13  
 FLEMING 912 TRAVELER  
 FLEMING 108 LEDA

- If you are looking to put some hair in your herd, this is your guy.
- A long-sided dude that is packed full of muscle.
- His calves will push down your scales at weaning time – weight matters!!
- Out of a 9-year-old cow – if you're looking for a cow maker give this guy a 2nd look.

## FSF/RJL Proudly Supporting



Claresholm 4H Beef



**Granum  
Food Bank**





Houston 3H sire

## 453 RJL *Houston* 453M

RJL 453M | 2403748 | 14-Feb-24

BW: 88 | Act WW: 787 | Feb 16/25 WT: 1253 | AOD: 5

ELLINGSON TOP SHELF 5050  
BLJ HOUSTON 3H  
COUNTRY LANE ROYAL LASS 3F

ELLINGSON PLATEAU 1155  
EA EMBLYNETTE 9203†  
S A V SENSATION 5615  
RIVERFRONT ROYAL LASS 616D

CONNEALY SPUR  
RJL GEMINI 933G  
RJL GEMINI 305A

CONNEALY STIMULUS 8419  
JAZZA OF CONANGA 8594  
FLEMING RIGHT TIME 007X  
FLEMING GEMINI 111Y

EPDs CE: -2 BW: 4.4 WW: 68 YW: 121 MILK: 23

- A complete package that is moderate framed.
- A rancher bull that carries power and performance with lots of volume and thickness.
- If hair is important in your herd – this guy has ample hair.



Houston 3H sire

## 460 RJL *Houston* 460M

RJL 460M | 2404575 | 21-Mar-24

BW: 97 | Act WW: 633 | Feb 16/25 WT: 1242 | AOD: 12

ELLINGSON TOP SHELF 5050  
BLJ HOUSTON 3H  
COUNTRY LANE ROYAL LASS 3F

ELLINGSON PLATEAU 1155  
EA EMBLYNETTE 9203†  
S A V SENSATION 5615  
RIVERFRONT ROYAL LASS 616D

JPD PIONEER 1X  
GGI EMMA 202Z  
EXAR EMMA 8810

S A V PIONEER 7301  
J P D BLACKCAP 4U  
STEVENSON MONEYMAKER R185  
RR EMMA 5247

EPDs CE: -1.5 BW: 3.8 WW: 69 YW: 123 MILK: 23

- A young mid-March stud that is a real powerhouse.
- Exhibits eye appeal, length and lots of performance.
- Out of a 12-year-old cow and has built in longevity genes.

# Congratulations Mark Shologan

and the DLMS Purebred team for receiving the Canadian Livestock Industry Leader of the Year award for 2025 at the National Western Stock Show in Denver, Colorado.



# Mentoring Juniors

## FSF & RJL Genetics in Action



# Cattle Vids

LIVESTOCK VIDEO PRODUCTION SERVICES  
BIG SCREEN VIDEO SALE SERVICES

MARKETING AGENTS FOR  
DLMS INTERNET BROADCAST SERVICES

FOR COMPLETE INFO CONTACT:

MARK SHOLOGAN 780-699-5082  
JOANNE SHOLOGAN 780-689-6068

## CAN'T MAKE THE SALE?

Watch, Bid & Buy Online

To view & bid visit [www.dlms.ca](http://www.dlms.ca), log-in with your username and password or sign-up for your free user account.

**BIDDERS** - click BUYER APPROVAL tab, select the sale you are interested in bidding at and click sign up.

For more information call:

Mark Shologan 780-699-5082 or Purebred Team 780-991-3025

DLMS  
[www.dlms.ca](http://www.dlms.ca)  
Direct Livestock Marketing Systems



CANADA'S ONLINE SEEDSTOCK SOURCE.



Southern Comfort 54H sire

# 18M FSF *Southern Comfort* 18M

FSF 18M | 1491545 | 28-Jan-24 | Polled | Purebred 30/32

BW: 90 | Act WW: 704 | Feb 16/25 WT: 1269 | AOD: 3

MRL STATEMENT 3F  
MRL SOUTHERN COMFORT 54H  
MRL MISS 4335B

R PLUS VENOM 4006B  
MRL MISS 6600D  
MRL EL TIGRE 52Z  
REMINGTON WISE GIRL 235U

RJL UPPER CUT 202Z  
FSF 629 MARIAH 12J  
FSF 629 MARIAH

MR NLC UPGRADE U8676  
DOUBLE BAR D BLACKBIRD22N  
TNT GUNNER N208  
FSF 477 SOFT TOUCH

EPDs CE: 12.2 BW: 1 WW: 69.2 YW: 99.6 MILK: 20.1

- His sire Southern Comfort has stamped all his calves with the ability to build muscle.
- Structurally correct with tons of hair.



Southern Comfort 54H sire

# 19M FSF RED *Comfort* 19M

FSF 19M | 1491536 | 28-Jan-24 | Polled | Purebred 30/32

BW: 98 | Act WW: 808 | Feb 16/25 WT: 1412 | AOD: 6

MRL STATEMENT 3F  
MRL SOUTHERN COMFORT 54H  
MRL MISS 4335B

R PLUS VENOM 4006B  
MRL MISS 6600D  
MRL EL TIGRE 52Z  
REMINGTON WISE GIRL 235U

RJL UPPER CUT 202Z  
FSF MS BLACK 11F  
MS BLACK 2Y

MR NLC UPGRADE U8676  
DOUBLE BAR D BLACKBIRD22N  
LRS RED REALITY 33J  
MISS PRECISION 53S

EPDs CE: 12.6 BW: 0.7 WW: 74.9 YW: 111.7 MILK: 17.4

- A dark red stout rascal with a Herd sire presence about him.
- A long-bodied standout bull in the pen.
- Smooth shouldered with long neck extension.
- Phenotypically checks all the boxes.



Southern Comfort 54H sire

## 23M FSF BLACK *Comfort* JCF 23M

FSF 23M | 1491525 | 31-Jan-24 | Polled | Percentage 24/32

**BW: 104 | Act WW: 816 | Feb 16/25 WT: 1345 | AOD: 10**      **EPDs**      **CE: 10.1    BW: 1.8    WW: 71    YW: 103.5    MILK: 21.4**

MRL STATEMENT 3F  
**MRL SOUTHERN COMFORT 54H**  
 MRL MISS 4335B

R PLUS VENOM 4006B  
 MRL MISS 6600D  
 MRL EL TIGRE 52Z  
 REMINGTON WISE GIRL 235U

REMINGTON UNANIMOUS 736Y  
**FSF 465 SOFT TOUCH**  
 ANGUS/ANGUS

STF UNANIMOUS UP26  
 REMINGTON SOFT TOUCH 3S  
 ANGUS/ANGUS  
 ANGUS/ANGUS

- This 24/32 Percentage Bull has lots of mass & muscle.
- Great disposition & great hair.
- Out of one of our favorite cows who is 10 years old with a perfect udder.

## 37M FSF BLK *Southern Comfort* 37M

FSF 37M | 1491556 | 08-Feb-24 | Polled | Purebred 30/32

**BW: 96 | Act WW: 603 | Feb 16/25 WT: 1223 | AOD: 12**

MRL STATEMENT 3F  
**MRL SOUTHERN COMFORT 54H**  
 MRL MISS 4335B

R PLUS VENOM 4006B  
 MRL MISS 6600D  
 MRL EL TIGRE 52Z  
 REMINGTON WISE GIRL 235U

MR NLC UPGRADE U8676  
**FSF 201 PROFESSIONALGRADE**  
 MARK'S MS SHOLOGAN 50R

ELLINGSON LEGACY M229  
 MS NLC MOJO S6119 B  
 GFI MAGNUM K52  
 LFE MARIAH 112M

**EPDs**      **CE: 11.4    BW: 1.9    WW: 78.1    YW: 114.6    MILK: 19.4**

- Long bodied with smooth shoulders.
- You can appreciate his clean front end and his long neck extension.



Southern Comfort 54H sire



Southern Comfort 54H sire

## 39M FSF RED *Comfort* 39M

FSF 39M | 1491526 | 08-Feb-24 | Polled | Purebred 30/32

BW: 66 | Act WW: 702 | Feb 16/25 WT: 1185 | AOD: 9

MRL STATEMENT 3F  
MRL SOUTHERN COMFORT 54H  
MRL MISS 4335B

R PLUS VENOM 4006B  
MRL MISS 6600D  
MRL EL TIGRE 52Z  
REMINGTON WISE GIRL 235U

HRD SHAZ 16A  
RMVH MISS SPADE 16C  
MS BLACK 2Y

TYMARC SHAZAM 113Y  
HRD SKY DOG 19R  
KN LRS RED REALITY 33J  
MISS PRECISION 53S

EPDs CE: 16.4 BW: -2.3 WW: 66.7 YW: 102.3 MILK: 23.8

- A very sound, free moving meat machine.
- Top 2% for calving ease and top 1% for birth weight.
- Moderate framed fellow.



Southern Comfort 54H sire



Soft Touch 36H dam

## 44M FSF *Southern Comfort* JCF 44M

FSF 44M | 1491541 | 14-Feb-24 | Polled | Purebred 28/32

BW: 104 | Act WW: 760 | Feb 16/25 WT: 1273 | AOD: 4

MRL STATEMENT 3F  
MRL SOUTHERN COMFORT 54H  
MRL MISS 4335B

R PLUS VENOM 4006B  
MRL MISS 6600D  
MRL EL TIGRE 52Z  
REMINGTON WISE GIRL 235U

RJL UPPER CUT 202Z  
FSF SOFT TOUCH JCF 36H  
FSF 465 SOFT TOUCH

MR NLC UPGRADE U8676  
DOUBLE BAR D BLACKBIRD 22N  
REMINGTON UNANIMOUS 736Y  
ANGUS/ANGUS

EPDs CE: 10.3 BW: 1.9 WW: 72.6 YW: 106.1 MILK: 19.4

- Here is 28/32 Percentage Bull that has dependable genetics built into his pedigree.
- A hairy meat machine with lots of eye appeal.
- Another stout Southern Comfort bull with lots of performance.



Western Alliance 400G sire

## 47M FSF *Alliance* JCF 47M

FSF 47M | 1491544 | 22-Feb-24 | Polled | Purebred 30/32

BW: 82 | Act WW: 710 | Feb 16/25 WT: 1196 | AOD: 3

CCLT ALLIANCE 91C  
KWA WESTERN ALLIANCE 400G  
BBN MISS SMARTY 400D

WS PILGRIM H182U  
BROOKS SHINIA 1A  
IPU RED WESTERN 49X  
MRL MISS SMARTY PANTS III

SS/PRS HIGH VOLTAGE 244X  
FSF 626D SOFT TOUCH JCF 27J  
FSF 626 SOFT TOUCH JCF

HTP/SVF DURACELL T52  
KENCO MILEY COTTONTAIL  
RJL UPPER CUT 202Z  
FSF 465 SOFT TOUCH

EPDs CE: 12.4 BW: -0.6 WW: 62.6 YW: 79.5 MILK: 17.8

- He is a smooth made lad that is wide topped.
- 47M, 44M & 23M are all out of the Soft Touch cow family.
- Great uddered females are packed into this pedigree.



## 48M FSF *Western Alliance* 48M

FSF 48M | 1491535 | 23-Feb-24 | Polled | Purebred 30/32

BW: 98 | Act WW: 679 | Feb 16/25 WT: 1185 | AOD: 6

EPDs

CE: 8.6 BW: 2 WW: 65.6 YW: 81.9 MILK: 17.8

CCLT ALLIANCE 91C  
KWA WESTERN ALLIANCE 400G  
BBN MISS SMARTY 400D

WS PILGRIM H182U  
BROOKS SHINIA 1A  
IPU RED WESTERN 49X  
MRL MISS SMARTY PANTS III

- A power house bull that is long, wide & thick made.
- He is clean fronted, tight sheathed and smooth made.
- Half brother sold to Jerry & Katie Sawley in our 2024 Sale.

SPRINGCREEK OLYMPIAN 66A  
FSF MS BLACK 10F  
MS BLACK 1A

SPRINGCREEK ALL IN 155Y  
SPRINGCREEK LINNE 33R  
MRL 98Y  
MISS RED 21P

## ONL *Project Whiskey* 23H

This year all the Charolais bulls are sired by our walking bull ONL PROJECT WHISKEY 23H (aka Buddy). We couldn't be more please with the consistency and performance that this sire has injected in our herd.

We are now on our 4th calf crop out of 'Buddy'. On 60 calves born the average birthweight 93 lbs and all have been born unassisted.

They are smooth shouldered, thick made, solid built, with an excellent hoof & foot structure and like their sire they are super docile. Just some variance in their overall size and weight. We couldn't be happier with the development of these bulls and the calves that "Buddy" has previously sired.





## 3M RJLF *Whiskey* 3M

RJLF 3M | MC895335 | 12-Jan-24 | Scurred

BW: 98 | Act WW: 777 | Feb 16/25 WT: 1358 | AOD: 4

KCM SPECTACULAR BID 240Z  
ONL PROJECT WHISKEY 23H  
RPJ MISS TRIM 298Z

JWX ALEJANDRO 630X  
KCM JEWEL 927W  
JWX SILVER BULLET 524W  
RPJ MISS TRIM 72X

LT AFFINITY 6221 PLD  
RJLF RIVER LADY 9H  
GCP RIVER LADY 10W

LT RUSHMORE 8060 PLD  
LT ATHENA 1247  
PCC YELLOWSTONE 405P  
GCP MONBO NUMBER FIVE 1K

EPDs CE: 10.3 BW: -1 WW: 51 YW: 94 MILK: 24

*Ambition*  
is the key to success!!



Miss Scarlett 9F dam

## 26M PITT *Whiskey* 26M

PITT 26M | MC895346 | 31-Jan-24 | Polled

BW: 84 | Act WW: 763 | Feb 16/25 WT: 1284 | AOD: 6

KCM SPECTACULAR BID 240Z  
ONL PROJECT WHISKEY 23H  
RPJ MISS TRIM 298Z

JWX ALEJANDRO 630X  
KCM JEWEL 927W  
JWX SILVER BULLET 524W  
RPJ MISS TRIM 72X

CEDARDALE ZEAL 125Z  
RJLF MISS SCARLETT 9F  
STEPPLER MISS 280D

CEDARDALE TYRANT 31T  
CEDARDALE MISS 64T  
HBSF ZORRO 1Z  
STEPPLER MISS 280U

EPDs CE: 6.9 BW: -0.8 WW: 53 YW: 99 MILK: 21



Using with successful results!

FerAppease is a Maternal Bovine Appeasing Substance (MBAS), that reduces stress and improves animal welfare.



# 32M RJLF *Whiskey* 32M

RJLF 32M | MC895326 | 05-Feb-24 | Polled

BW: 100 | Act WW: 751 | Feb 16/25 WT: 1285 | AOD: 10

KCM SPECTACULAR BID 240Z  
**ONL PROJECT WHISKEY 23H**  
 RPJ MISS TRIM 298Z

JWX ALEJANDRO 630X  
 KCM JEWEL 927W  
 JWY SILVER BULLET 524W  
 RPJ MISS TRIM 72X

HBSFYOGI BERRA 31Y  
**GCP RIVER LADY 7B**  
 GCP RIVER LADY 27Z

WINN MANS ESPERENZA 835U  
 HIGH BLUFF TWINKLE 11T  
 GERRARD MONTEZUMA 6T  
 GCP RIVER LADY 20P

EPDs CE: -3.9 BW: 5.3 WW: 59 YW: 104 MILK: 26

*A goal*  
 is a dream with a deadline!



River Lady 7B dam



# 34M RJLF *Whiskey* 34M

RJLF 34M | MC895329 | 05-Feb-24 | Polled

BW: 100 | Act WW: 781 | Feb 16/25 WT: 1462 | AOD: 9

KCM SPECTACULAR BID 240Z  
**ONL PROJECT WHISKEY 23H**  
 RPJ MISS TRIM 298Z

JWX ALEJANDRO 630X  
 KCM JEWEL 927W  
 JWY SILVER BULLET 524W  
 RPJ MISS TRIM 72X

SPARROWS CONGO 247Z  
**RJL RIVER LADY 12C**  
 GCP RIVER LADY 2U

LHJR BIG BANG  
 SPARROWS SYMPHONY 230W  
 PCC YELLOWSTONE 405P  
 GCP RIVER LADY 6M

EPDs CE: 6.1 BW: 0.8 WW: 52 YW: 95 MILK: 24

*Be too positive* to be doubtful  
*too optimistic* to be fearful and  
*too determined* to be defeated



## 41M RJLF *Whiskey* 41M

RJLF 41M | MC895337 | 11-Feb-24 | Polled

BW: 110 | Act WW: 702 | Feb 16/25 WT: 1309 | AOD: 4

KCM SPECTACULAR BID 240Z  
ONL PROJECT WHISKEY 23H  
RPJ MISS TRIM 298Z

JWX ALEJANDRO 630X  
KCM JEWEL 927W  
JWX SILVER BULLET 524W  
RPJ MISS TRIM 72X

LT AFFINITY 6221 PLD  
RJLF MONIQUE 10H  
GCP MONIQUE 29X

LT RUSHMORE 8060 PLD  
LT ATHENA 1247  
GERRARD MONTEZUMA 6T  
GCP RIVER LAZY 10T

EPDs CE: 4 BW: 1.8 WW: 53 YW: 99 MILK: 24

*True leaders*  
don't create more followers,  
they create more leaders!



## 49M PITT *Whiskey* 49M

PITT 49M | MC895348 | 26-Feb-24 | Polled

BW: 86 | Act WW: 659 | Feb 16/25 WT: 1192 | AOD: 4

KCM SPECTACULAR BID 240Z  
ONL PROJECT WHISKEY 23H  
RPJ MISS TRIM 298Z

JWX ALEJANDRO 630X  
KCM JEWEL 927W  
JWX SILVER BULLET 524W  
RPJ MISS TRIM 72X

EC NO DOUBT 2022P  
RJLF MISS SCARLETT 6H  
RJLF MISS SCARLETT 9F

M6 GRID MAKER 104 PET  
EC LADY DUKE 2022P  
CEDARDALE ZEAL 125Z  
STEPPLER MISS 280D

EPDs CE: 9.4 BW: -1.1 WW: 52 YW: 101 MILK: 23

At the end of the Day  
*Faith - Family - Farm*



27th Annual CJSS  
April 3, 2024

*CHINOOK*  
JUNIOR  
STOCK SHOW

Please join us on  
April 23, 2025  
for this year's show at the  
CLARESHOLM AGRIPLEX

# Terms & Conditions

**TERMS OF SALE:** The terms of the sale are cash or cheque, payable at par at the sale location. The release of livestock will not be given until satisfactory settlement has been made. We reserve the right to withhold animals from shipment for which payments have not been received prior to departure time.

**BIDS:** Every animal entering the sale ring will be sold to the highest bidder.

**DISPUTES:** In case of disputes, bidding will be opened between the parties involved. If no further bid is made, the buyer will be the person from whom the auctioneer accepted the last bid. The auctioneer's decision in such matters will be final.

**ANNOUNCEMENTS:** Errors discovered in the catalog will be corrected by announcement from the Auction Stand at sale time and such corrections will take precedence over printed material in the catalog.

**PURCHASER'S RISK & BULL INSURANCE:** Ownership risk to the purchaser commences when the Auctioneer's gavel falls. Livestock coverage will be available at the clerk's desk from our appointed representative on Sale Day.

**BREEDING GUARANTEE:** We guarantee to provide you with a sound breeding bull, capable of passing a breeding soundness evaluation performed by a licensed veterinarian. In the event of any unlikely dispute, the regular terms and conditions that are standard with the Canadian Angus, Canadian Simmental and Canadian Charolais Associations shall apply. Customer satisfaction is paramount to us.

**FERTILITY:** All bulls will pass a complete breeding soundness evaluation, including a semen test prior to the sale. All bulls will meet or exceed breed standards.

**SHIPPING INSTRUCTIONS & DELIVERY OF BULLS:** Purchasers are requested to leave shipping instructions when making settlement. Delivery assistance will be given to shipping after the sale, but no risk will be assumed by Foothills Auctioneers Inc. or the sellers. We will strive to deliver the bulls to your corral or to central points when necessary. Delivery will commence mid-April unless prior arrangements have been made with the seller.

**POST SALE BULL DEVELOPMENT:** Bulls returning to Fleming's will be housed at the buyer's risk. We strongly recommend that all bulls returning to Fleming's be insured. The Sellers will not be responsible for any type of injury while in the seller's care. Therefore, the purchase of mortality insurance is strongly recommended.

**CERTIFICATES OF REGISTRY:** A certificate of registry will be duly transferred to the buyer by the breeder for each bull after complete and full payment has been made.

**CATTLE INSPECTION & IDENTIFICATION:** CCIA tags will be in all bulls. The tag number will be the lot number in the catalogue. All bulls will be available for inspection prior to the sale.

**ACCIDENTS:** Although every precaution will be taken to protect the safety and comfort of the buyers; neither the auction market, sale staff, auctioneer nor any owner assumes any responsibility in this manner and disclaims any liability, legal or otherwise, in the event of an accident or loss of property.

**LIABILITY:** Foothills Auctioneers Inc. are acting as agents only and assume no responsibility for representations made by the seller. Purchasers must look to the seller for fulfillment of all guarantees and representations made hereunder.

**SEMEN COLLECTION:** The breeders in the Power Up Your Pasture Bull Sale reserve the right to draw semen on any of the sale bulls for in herd use only. This would be at the buyers convenience and the sellers expense.





# The 5th Generation

*"Looking to the Future"*

# RJ

LIVESTOCK



• Please Bring Your Catalog to the Sale •

**Friday. April 4<sup>th</sup> 2025. 1:30 pm**  
Foothills Auctioneers | Stavelly, Alberta