

BMB BREWIN & ANGUS



RED & BLACK ANGUS BULL SALE



FRIDAY MARCH 13, 2026
1:30 PM @ PERLICH BROS AUCTION
LETHBRIDGE, AB

BMB BREWIN ANGUS & GURNEY LAND AND LIVESTOCK

FRIDAY MARCH 13, 2026

SALE START TIME AT 1:30PM

PERLICH BROS. AUCTION MART, LETHBRIDGE, AB

****Viewing of all bulls will be available for viewing at their respective farms prior to the sale or the morning of the sale at Perlich Bros. Auction.****

SALE DAY PHONES:

BRENT BREWIN	403.382.9164
JANESSA BREWIN	403.330.3417
WES GURNEY	403.308.2473
BOB PERLICH, AUCTIONEER	403.382.7800
DARCY MOOREHEAD, RINGMAN	403.635.0308
JOE PERLICH, FIELD REP	403.635.0310

LIVESTOCK INSURANCE:

STOCKMENS INSURANCE: CHERYL BROWN 403.601.3460

Sale Managed By:



MARK HOLOWAYCHUK	403.896.4990
ROGER PETERS	403.828.9815
CHELSEA GILL	403.952.9980

OFFERING:

- 68 Red & Black Angus Bulls
- Approximately 90 Red & Black Replacement Heifers

BIRTH WEIGHT AND CALVING EASE

University studies in Wyoming and data from Montana & Colorado lend credence to the following conclusions.

1. The birth weight itself influences calving ease by 65%
2. The female has 60-70% influence on birth weight of her calf
3. The bull has 30-40% influence on birth weight of his progeny
4. Pelvic measurement and angle as well as the shape of the calf has 35-40% influence on calving ease
5. Length of gestation greatly affects birth weight. A fetus can gain over one pound per day in the last days of gestation
6. Weather and temperature the last 30 days affect the length of gestation
7. Size and maturity of the cow influences calving ease

Remember, everything is relative. Increased growth, frame and performance will increase BW. A longer-bodied calf will weigh more. If a calf is expected to have the genetics for growth, it will display this prior to birth as well as after. As a rule of thumb, it takes a calf weighing 85 lbs at birth to finish at 1200-1250 lbs. A cow should easily give birth to a calf weighing 8% of her own body weight. Thus a 1200 lb cow should give birth to a 96 lb calf with ease.

Continued selection for light birth weights will ultimately reduce the mature sizes and performance of your cattle.

Internet Bidding Available

D | L | M | S
www.dlms.ca
Direct Livestock Marketing Systems

For more information call:
Mark Shologan 780-699-5082 or Purebred Team 780-991-3025

PERLICH BROS
AUCTION MARKET LTD.

CLIX
AUCTION
CANADIAN LIVE INTERNET EXCHANGE

OBI Livestock Welcome 2025

I would like to Welcome you all to the 2nd Annual Bull Sale for BMB Brewin Angus & Gurney Land & Cattle. These 2 seedstock producers in southern Alberta both have great families and so easy to deal with and that is great to see as a customer of theirs. At both operations, these are the best set of bulls they have offered.

BMB Brewin Angus have developed bulls for the area with obtaining top end walking herd bulls over the years along with continuing to use A.I. bulls to develop their herd. The cow herd is large with many females lasting a long time at the ranch. Longevity is key in this operation. In the bull pen this year we have a variety for your pleasures, with a lot of calving ease bulls while still having the power bulls for the cow herd. These bulls are fed to last long for the new owners, and their customer satisfaction is guaranteed.

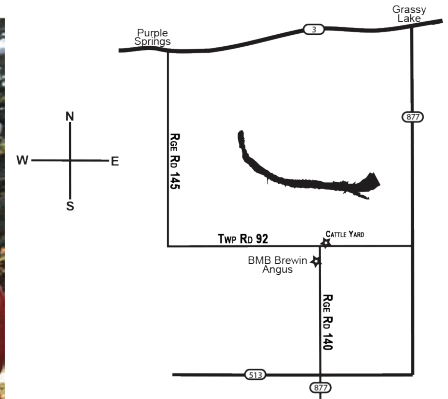
Gurney Land & Livestock will continue to carry on their success from previous bull sales. Bulls are also fed for longevity and no issues in the long run. They go out and work hard for their new owners. Large sire groups enable you to see what that A.I. bull or walking bull did for them. They also have started a Red Angus program to service their customers. The bulls are in great shape with a good foot under them. Strong culling process will be seen by all with the quality in this bull pen.

Buy with confidence from either of these programs as these bulls go out to work with hardly any issues. I am very familiar with these bulls, so please do not hesitate to call me, the consignors or the sale staff on the offering. See you at Lethbridge

Mark Holowaychuk
OBI



BMB BREWIN ANGUS



We wish to extend a warm welcome to our 2nd annual bull sale. As I write these notes we are into the full swing of calving. Pictures and videos are done (albeit the videos are done early, but have to fit them in when we can) & catalog is almost complete. We believe our bulls will not disappoint this year. Our goal is to raise bulls that will go out and work for you. This year we will once again have a strong group of replacement heifers on offer (majority from our purebred herd sold as commercial). We are beyond humbled with recently winning the Grand Champion Purebred Heifer pen of 3 at the Medicine Hat Pen Show back in December. Janessa likes to keep rubbing it in to Brent that her pick was the best choice of uniformity for the group of heifers and his alternative choice of heifer was wrong for the group.

Again we would like to invite and encourage past & future buyers to come to the farm prior to sale day to evaluate the bulls & heifers on offer. With much gratitude & appreciation we would like to thank our past customers, Perlich Bros. Auction, fellow producers and family & friends for their continued support over the years. We always look forward to seeing you on sale day.

Brent, Myrna, Devin & Janessa

**TELUS Cattle
Professional Services**
BROOKS • LETHBRIDGE • OKOTOKS • TABER

I have had the pleasure of working with the Brewin family for the past six years and have enjoyed watching the compassion, care, and progression of their operation. BMB Brewin Angus utilizes a comprehensive herd health program that emphasizes the health and performance of their livestock. The breeding herd receives annual preventative 8-way clostridial, 5-way viral, and scour pathogen vaccinations to protect the cow-calf herd. At birth, calves receive an intranasal pneumonia immunization, vitamins, and a preventative coccidiosis treatment. During spring turnout and weaning, calves are vaccinated with a 5-way viral vaccine including Mannheimia haemolytica, as well as a 7-way clostridial vaccine with Histophilus Somni. Additionally, a mineral package is provided free choice and is integrated into the TMR to maintain peak performance. To ensure they meet all necessary criteria before entering a new herd, replacement heifers undergo pre-breeding palpation. Buyers can be confident when purchasing a new herd bull or a package of replacement heifers from the knowledgeable and attentive breeders at BMB Brewin Angus.

Best regards,

Cory Davis, DVM
Telus Cattle Professional Services, Taber

Reference Sires



RED PIE COMPLETE 221

2353483 | IMP 221K | JANUARY 22, 2022

RED LEACHMAN PLEDGE A282Z
RED KJL/CLZB COMPLETE 7000E
RED HXC 502R

RED LSF NEXTPECTATION 0083X
RED LCOC ZRA TG004
RED BECKTON NEBULA P P707
RED HXC 502R

RED PIE QUARTERBACK 789
RED PIE JULY DALLES 0167
RED PIE JULY DALLES 7295

RED PIE STOCKMAN 4051
RED PIE RUBY 520
RED WCR MOJO 3012A
RED IE JULY DALLES 2032

BW	WW	YW	E P D	BW	WW	YW	M	CE
64	700	1281		-1.5	47	85	28	7



RED PIRO MANIAC 352L

2331405 | PR 352L | JANUARY 13, 2023

RED BAR-E-L HIGH TIDE 63C
RED PIRO HIGH TIDE 897F
RED PIRO BELINDA 558C

RED U2 JUSTIFIED 235Z
RED BAR-E-L BESSIE 91W
RED SIX MILE GAME FACE 164Y
RED PIRO BELINDA 9104W

RED PIRO TOAST 203Z
RED PIRO KURUBA 5114C
RED PIRO KURUBA 007X

RED BRYLOR TOAST 30T
PIRO BARBARA 817U
RED PIRO PASQUALE 819U
RED PIRO KURUBA 820U

BW	WW	YW	E P D	BW	WW	YW	M	CE
79	-	-		0.2	46	79	22	6



RED LWNBRG SLOWBURN 224K

2281672 | TED 224K | FEBRUARY 26, 2022

RED U2 DOMINION
RED LWNBRG SLOWBURN 102H
RED U2 FAVORITE 275F

RED HOWE HESSTON 212C
RED U2 HIDE HO 459D
RED U2 RENOWN 193C
RED KBJ FAVORITE 931B

RED LWNBRG FORCE 14E
RED LWNBRG FORCE 62G
RED LWNBRG AUTOMATIC 57D

RED ANDRAS FUSION R236
RED LWNBRG RONA 110C
RED BRYLOR AUTOMATIC 95B
RED TED PATRIOT 113Y

BW	WW	YW	E P D	BW	WW	YW	M	CE
70	776	1251		-2.3	49	81	25	12



RED LAURON LEDGER 25L

2323437 | RLH 25L | JANUARY 30, 2023

RED U2 EL CHAPO 76F
RED REDRICH JUSTICE
RED REDICH FREY-EX 240F

RED U2 RENOWN 193C
RED U2 DYNA 89Y
RED WILBAR LONGITUDE 646Y
RED ANCHOR 1 FREY-EX 238A

RED BIEBER ROLLIN DEEP Y118
RED LAURON BLACKBIRD 24G
RED LAURON BLACKBIRD 3S

RED BIEBER ROOSEVELT
RED BIEBER TILLY 399W
RED RUNNING BAR PRONTO 26P
RED LAURON CV BLACKBIRD 42N

BW	WW	YW	E P D	BW	WW	YW	M	CE
84	673	1252		1.5	37	66	19	2



**LOT
1**

RED BLJ NEXUS 11N

2434156 | BLJ 11N | FEBRUARY 18, 2025

RED LWNBRG SLOWBURN 102H
RED LWNBRG SLOWBURN 224K
RED LWNBRG FORCE 62G

RED 3J ONE OF A KIND A228
RED BLJ MISS FIRE 11F
RED BLJ MISS FIRE 25A

RED U2 DOMINION
RED U2 FAVORITE 275F
RED LWNBRG FORCE 14E
RED LWNBRG AUTOMATIC 57D

RED BUF CRK THE RIGHT KINDU199
RED BADLANDS CEDAR 922
RED BRYLOR TOAST 30T
RED TR MISS FIRE 464T

BW	205D	E P D	BW	WW	YW	M	CE
73	697		-2.5	41	69	23	12



AOD 7 Yrs. WW 800 lbs Oct 15th.
Here is a valuable calving ease bull that puts it all together, structural soundness, angus character with length and plenty of shape and muscle with a weaning index of 105.
Paternal Sibling Lots 6, 20 & 33

**LOT
2**

RED BLJ NESBIT 12N

2434186 | BLJ 12N | JANUARY 26, 2025

RE KJL/CLZB COMPLETE 7000E
RED PIE COMPLETE 221
RED PIE JULY DALLES 0167

RED BLJ HOWIE 50H
RED BLJ MS DIVINEND 12L
RED BLJ MS DIVINEND 31A

RED LEACHMAN PLEDGE A282Z
RED HXC 507C
RED PIE QUARTERBACK 789
RED PIE JULY DALLES 7295

RED DKF RACER 8E
RED BLJ MISTY 50C
RED TR INVASION 18Y
RED BLJ MS DIVINEND 11Y

BW	205D	E P D	BW	WW	YW	M	CE
64	618		-1.9	45	81	23	8

AOD 2 Yrs. WW 678 lbs Oct 15th
Calving ease bull without giving up style, size and length.
Paternal Sibling Lot 19



GRAND-DAM

LOT
3

RED BLJ NEWELL 33N

2434153 | BLJ 33N | FEBRUARY 8, 2025(TW)

RED UBAR SEQUOIA 202
RED BCC CRIMSON JEWELS 102U
RED RAVEN RIVER GOLDIE 47N

RED BJR HIGH CAPACITY 008
RED FORSTER COPPRQUEEN 7168
RED WILD ROSE LIGHTNING 183J
RED WILD ROSE GOLDIE 47H

RED LJC MISSION STATEMENT P27
RED BLJ MISS FIRE 33B
RED BLJ MISS FIRE 2W

RED LJC LANCER 806
RED LJC HANNAH 016
RED MEM RAMBLER 220T
RED TR MISS FIRE 464T

BW	205D	E P D	BW	WW	YW	M	CE
62	629		0.1	37	65	24	8

AOD 11 Yrs. WW 718 lbs Oct 15th
Weaning Weight ratio 100. Low birthweight Crimson Jewel son. Balanced heifer bull that is very sound. A full sibling resides at Double C Red Angus.



**HEIFER
BULL**



**MATERNAL
SIBLING**

LOT
4

RED BMB NATTERJACK 71N

2434836 | BMB 71N | FEBRUARY 3, 2025

RED LAZY MC LOOKOUT 153X
RED HRA LOOKOUT 711E
RED LAKEVIEW MARILYN MUNROE

LAZY MC LOOKOUT 37U
RED LAZY MC GOLD DESIGN 84U
RED LAZY MC TROOPER 21Y
RED LAKEVIEW MARILYN MONROE 10

RED NCJ LAZY MC VENOM 34Z
RED BMB SUSIE Q 71D
RED BMB SUSIE Q 344Z

RED LAZY MC COWBOY CUT 26U
RED HXC JOLENE 301N
RED BRYLOR NEW TREND 22D
RED MEADOW CK SUSIE 57N

BW	205D	E P D	BW	WW	YW	M	CE
91	715		2.5	54	90	22	-3

AOD 9 Yrs. WW 864 lbs Oct 15th
Red HRA Lookout is recognized for producing thick dark red progeny with good growth, structure and maternal traits which this bull exemplifies well with a weaning index of 105. Halter broke.



SIRE

LOT
5

RED BLJ NILE 76N

2434162 | BLJ 76N | FEBRUARY 11, 2025

RED DWAJO MACK 4F
RED LAURON HEARTBREAKER 53H
RED LAURON LASSIE 144W

RED TOPHAM PETERBILT 415B
DWAJO LADY 67Y
RED LAZY R C MONTE CARLO 375N
RED LAURON LASSIE 17N

RED NCJ LAZYM RAMBLINMAN 305B
RED BLJ MISS FIRE 76H
RED BLJ MISS FIRE 70D

RED LAZY MC TROOPER 21Y
RED HXC JOLENE 301N
RED NCJ LAZY MC VENOM 34Z
RED BLJ MISS FIRE 7X

BW	205D	E P D	BW	WW	YW	M	CE
100	683		2	45	73	20	-3

AOD 5 Yrs. WW 800 lbs Oct 15th
Deep pigmented, structurally correct with great feet and legs. Plenty of length and neck extension and natural muscle shape. Full Sibling Female sold in Ladies of the West Bred Sale '23 to GT Evans Holdings & Pearl Cattle Co.



FULL SIBLING



DAM



LOT 6

RED BMB NAVI 72N

2442602 | BMB 72N | FEBRUARY 16, 2025

RED LWNBRG SLOWBURN 102H
RED LWNBRG SLOWBURN 224K
RED LWNBRG FORCE 62G

RED RMJ REDMAN 1T
RED BMB TOP MARIAS 72D
RED TED TOP MARIAS 165R

RED U2 DOMINION
RED U2 FAVORITE 275F
RED LWNBRG FORCE 14E
RED LWNBRG AUTOMATIC 57D

RED 5L NORSEMAN KING 2291
CROWFOOT KURUBA 4033P
RED TED GLACIER MARIAS 65L
RED TED FED'S BO 46J

BW	205D	E P D	BW	WW	YW	M	CE
96	680	D	-0.2	38	67	21	5

AOD 9 Yrs. WW 782 lbs Oct 15th.

Real world beef bull that will sire calves with scale stomping pay weight. Dam goes back to a female purchased from Leeuwenburgh's who was also an Elite/Premiere dam. Sons sold to Black Gold Ranching, Brian Sekura & Brent Smith. Paternal Siblings Lots 1, 20 & 32

LOT 7

RED BLJ NADER 94N

2434154 | BLJ 94N | FEBRUARY 16, 2025

RED YCLC 7H BERETTA 142E
RED LFE RA LEWIS BERETTA 3218K
RED LFE RA DOLL 2148D

RED TR OASIS 142Y
RED YCR MISS YOAKAM 1594C
RED YCR MISS YOAKAM 1302A

RED U2 RIFF 1213C
RED YCLC RES 179P 291S
RED LFE TURBULENCE 3082Y
RED LFE RA DOLL 2101Y

RED TR ESCALADE 318T
RED TR SYBIL 571U
RED BJR AH BRANDED BEEF L107
RED YCR YOAKAM 117Y

BW	205D	E P D	BW	WW	YW	M	CE
92	702	D	4.4	49	83	33	-5

AOD 10 Yrs. WW 809 lbs Oct 15th.

In dam purchase from Yarrow Creek dispersal with proven pedigree. Dark red, balanced body and built with longevity in mind. Weaning weight ratio of 103.



LOT
8

RED BMB NIMBUS 143N

2434848 | BMB 143N | FEBRUARY 13, 2025

RED CRUMP MAGNITUDE 5507
RED CRUMP NEW DECADE 9341
RED TR BRANDY XT074

RED BROWN PREMIER X876
RED CRUMP TABITHA 3140
RED TR EPIC ST618
RED TR COCA TR 527

RED TR DOWN TOWN 133A
RED BMB MISS PINE 143D
RED BMB MISS PINE 191X

RED BIEBER ROLLIN DEEP Y118
RED TR GOLDETTE 297R
RED PERKS CHATEAU 309R
RED MEADOWS CK MISS PINE 108R

BW	205D	E P D	BW	WW	YW	M	CE
70	594		-2.9	30	62	30	11



**HEIFER
BULL**

AOD 9 Yrs. WW 694 lbs Oct 15th
An attractive deep red well balanced heifer bull with abundant capacity and thickness.

LOT
9

RED BMB NIGHTFALL 156N

2400577 | BMB 156N | JANUARY 30, 2025

RED DURALTA 43 FORTRESS 82H
RED PEDERSEN LASER 215L
RED PEDERSEN LASSIE 22H

RED SIX MILE FIFTH SENSE 43F
RED DURALTA 2W BEELINE 24B
RED KJHT POWER TAKE OFF
RED HR HAHN CBCC LASSIE 112E

RED LWNBRG FLEX 79B
RED BMB CLAIRE 156F
RED BMB CLAIRE 870C

RED MRLA FLEX 49Z
RED TED CHATEAU 6U
RED TR DOWN TOWN 133A
RED CRESCENT CREEK CLAIRE 33X

BW	205D	E P D	BW	WW	YW	M	CE
74	663		-0.4	45	77	29	7



**HEIFER
BULL**

AOD 7 Yrs WW 815 lbs Oct 15th.
Dark red, smooth and attractive for a heifer bull and calving ease to boot.
Paternal Sibling Lot 10.

LOT
10

RED BMB NOBILITY 561N

2434363 | BMB 561N | JANUARY 27, 2025

RED DURALTA 43 FORTRESS 82H
RED PEDERSEN LASER 215L
RED PEDERSEN LASSIE 22H

RED SIX MILE FIFTH SENSE 43F
RED DURALTA 2W BEELINE 24B
RED KJHT POWER TAKE OFF
RED HR HAHN CBCC LASSIE 112E

RED NCJ LAZY MC VENOM 34Z
BMB CLAIRE 561H
BMB SCOTTISH CLAIRE 519A

RED LAZY MC COWBOY CUT 26U
RED HXC JOLENE 301N
RR SCOTMAN 2999
RED CRESCENT CREEK CLAIRE 99T

BW	205D	E P D	BW	WW	YW	M	CE
94	617		1.8	42	77	24	0



SIRE OF LOT 9 & 10

AOB 5 Yrs. WW 760 lbs Oct 15th.
Explosively powerful and growthy. He is long sided and big topped.
Paternal Sibling Lot 9.



SIRE

LOT 11

RED BMB NOBEL 192N

2434359 | BMB 192N | JANUARY 24, 2025

RED LAZY MC COWBOY CUT 26U
RED NCJ LAZY MC VENOM 34Z
RED HXC JOLENE 301N

RED LAZY MC STOUT 30S
RED LAZY MC STAR 185M
RED BECKTON JULIAN GG B571
RED HXC JAYLO LB136

RED LAZY MC TRADITION 111C
RED BMB REBELLO 192F
RED BMB REBELLO 80U

RED WPRA LEGACY A-314
RED LACY MC FIREFLY 78R
RED SK MANKOTA 135R
RED BMB REBELLO 7S

BW	205D	E P D	BW	WW	YW	M	CE
98	631		4.1	48	82	18	-8

AOD 7 Yrs. WW 785 lbs Oct 15th.

A beef bull with depth of rib, level hip and topline with muscle infused. Eye appeal will always add value to your calf crop.

Paternal Sibling Lot 21

LOT 12

RED BMB NARCOSIS 204N

2434851 | BMB 204N | FEBRUARY 28, 2025

KENRAY MERIT RED BOSS 31H
BMB RANGO 20K
RED KENRAY KANNA 20H

BAR S RANGE BOSS 4002
RED CINDER FREYJA 29E
RED KENRAY STAUNCH 61D
RED KENRAY KANNA 160F

RED BMB EDGE 625B
RED BMB MARIAS 204E
RED BMB MARIAS 839C

RED CROWFOOT OLE'S OSCAR 2042M
RED BMB SCARLET FIREFLY 69U
RED TR DOWN TOWN 133A
RED BMB MARIAS 137W

BW	205D	E P D	BW	WW	YW	M	CE
80	669		-0.5	37	58	26	3

AOD 8 Yrs. WW 738 lbs Oct 15th.

Smooth made heifer bull with some added length. Dam goes back to the elite dam purchased from Leeuwenburghs. Bull sold to Barrow Farm & Ranch.

Paternal Sibling Lot 33



SIRE OF LOTS 12 & 33

HEIFER
BULL

LOT 13

RED BMB NEWTON 239N

2434389 | BMB 239N | FEBRUARY 9, 2025(TW)

RED TRIPLE L HACKSAW 1H
RED PIRO HACKSAW 2174K
RED YCR PRINCESS 2050H

RED U2 REVERENCE 198C
RED WRIGHTS TRIPLE L PRIDE 69C
RED WHEEL UNANIMOUS 92E
RED YCR PRINCESS 15105C

RED BIEBER CL ENERGIZE F121
RED BMB ANNIKA 239L
RED BMB ANNIKA 765J

RED BIEBER CL ATOMIC C218
RED BIEBER CL ADELLE 575D
RED GOAD HIGH ROLLER 142'17
RED BMB ANNIKA 635B

BW	205D	E P D	BW	WW	YW	M	CE
76	701		4	54	90	27	-6.5

AOD 2 Yrs. WW 743 lbs Oct 15th.

This bull will grab your attention at every angle. Sharp fronted with added length and muscle. Weaning rate ratio 100. BW averages of sires progeny are Male 81 lbs, Females 79 lbs. Paternal Siblings Lots 17 & 18.



SIRE OF LOT 13, 17 & 18

**LOT
14**

RED BMB NICKLE 151N

2434368 | BMB 151N | JANUARY 26, 2025

RED PIRO HIGH TIDE 897F
RED PIRO MANIAC 352L
RED PIRO KURUBA 5114C

RED LWNBRG FLEX 79B
RED BMB BABY GIRL 151K
RED BMB BABY GIRL 120D

RED BAR-E-L HIGH TIDE 63C
RED PIRO BELINDA 558C
RED PIRO TOAST 203Z
RED PIRO KURUBA 007X

RED MRLA FLEX 49Z
RED TED CHATEAU 6U
RED LONE STONE PRIME RIB 107Z
RED BMB BABY 237X

BW	205D	E P D	BW	WW	YW	M	CE
64	611		-0.8	41	74	21	8



**HEIFER
BULL**

AOD 3 Yrs. WW 714 lbs Oct 15th
Calving ease dream bull. Long bodied, lean and smooth in his make-up.
Paternal Sibling Lots 15 & 16.

**LOT
15**

RED BMB NITTY GRITTY 230N

2434929 | BMB 230N | FEBRUARY 11, 2025

RED PIRO HIGH TIDE 897F
RED PIRO MANIAC 352L
RED PIRO KURUBA 5114C

RED DAHLKE ROCKEFELLER 009H
RED BMB DELIGHT 230L
RED BMB DELIGHT 676J

RED BAR-E-L HIGH TIDE 63C
RED PIRO BELINDA 558C
RED PIRO TOAST 203Z
RED PIRO KURUBA 007X

RED 5L BOURNE 117-48A
RED DAHLKE MS HILTON 13F
RED SHILOH FEAR FACTOR 85F
RED BMB DELIGHT 445G

BW	205D	E P D	BW	WW	YW	M	CE
79	667		-0.1	49	81	27	5



**HEIFER
BULL**



DAM

AOD 2 Yrs. WW 696lbs Oct 15th.
Another heifer bull sired by Red Piro Maniac. Out of a 1st calf heifer who
did a bang up job raising a good one. Paternal Sibling Lots 14 & 16.

**LOT
16**

RED BMB NYLES 288N

2434384 | BMB 288N | FEBRUARY 15, 2025

RED PIRO HIGH TIDE 897F
RED PIRO MANIAC 352L
RED PIRO KURUBA 5114C

RED DOUBLE C JIN 217
RED BMB DAISY 288L
RED DOUBLE C DAISY 202D

RED BAR-E-L HIGH TIDE 63C
RED PIRO BELINDA 558C
RED PIRO TOAST 203Z
RED PIRO KURUBA 007X

RED DOUBLE C ASPIRATION 319A
RED DOUBLE C BLOCKANA 498B
RED WRAZ PHANTOM 12B
DOUBLE C DAISY 496B

BW	205D	E P D	BW	WW	YW	M	CE
73	678		0.4	43	79	23	6



**HEIFER
BULL**



DAM

AOD 2 Yrs. WW 700 lbs Oct 15th.
Heifer Bull ALERT!! Extreme calving ease. Dark red, great hair, Impressive
muscle shape and tons of eye appeal. Paternal Sibling Lots 14 & 15.



HEIFER
BULL



SIRE OF LOTS 13, 17 & 18

LOT
17

RED BMB NAPOLEAN 310N

2434381 | BMB 310N | FEBRUARY 6, 2025

RED TRIPLE L HACKSAW 1H
RED PIRO HACKSAW 2174K
RED YCR PRINCESS 2050H

RED BMB JUMANJI 504J
RED BMB MARIAS 310L
RED BMB MARIAS 609H

RED U2 REVERENCE 198C
RED WRIGHTS TRIPLE L PRIDE 69C
RED WHEEL UNANIMOUS 92E
RED YCR PRINCESS 15105C

RED MRLA RESOURCE 137E
RED BMB MISTRESS 504A
RED HOWE RATTLER 54F
RED BMB MARIAS 204E

BW	205D	E P D	BW	WW	YW	M	CE
73	674		0.6	46	73	28	1

AOD 2 Yrs. WW 718 lbs Oct 15th
Low birth weight son out of a first calf heifer. Balanced heifer bull that is very sound and will sire excellent replacement females. His dam goes back to Red Ted Top Marias 165R who was an elite dam.

LOT
18

RED BMB NIKOLA 332N

2434379 | BMB 332N | FEBRUARY 21, 2025

RED TRIPLE L HACKSAW 1H
RED PIRO HACKSAW 2174K
RED YCR PRINCESS 2050H

RED RSL FLOYD 96G
RED BMB BEAUTY 332L
RED YOLO BEAUTY 9B

RED U2 REVERENCE 198C
RED WRIGHTS TRIPLE L PRIDE 69C
RED WHEEL UNANIMOUS 92E
RED YCR PRINCESS 15105C

RED U2 FOREIGNER 478E
RED RSL BITTERSWEET 235D
RED YOLO 2Z ZINGER
RED YOLO YIKES 2Y

BW	205D	E P D	BW	WW	YW	M	CE
78	677		1.9	44	70	26	-4

AOD 2 Yrs. WW 738 lbs Oct 15th.
This cherry red soft made stud is full of eye appeal, depth, length and balance. Use on larger framed heifers



HEIFER
BULL



GRAND-DAM



**LOT
19**

RED BMB NEDDY 341N

2343859 | BMB 341N | FEBRUARY 11, 2025

RE KJL/CLZB COMPLETE 7000E
RED PIE COMPLETE 221
RED PIE JULY DALLES 0167

RED LEACHMAN PLEDGE A282Z
RED HXC 507C
RED PIE QUARTERBACK 789
RED PIE JULY DALLES 7295

RED HOWE TEMPT 87B
RED BMB MISS PINE 341E
RED BMB MISS PINE 356Z

TOWAW TEMPT 15X
RED HOWE MS CRESTON 80S
RED RMJ REDMAN 1T
RED BMB MISS PINE 191X

BW	205D	E P D	BW	WW	YW	M	CE
80	647	D	-1.1	43	79	32	6

AOD 8 Yrs. WW 760 lbs Oct 15th.
Another sure fire calving ease bull. His sire definitely stamps his calves with extra style and size. Paternal Sibling Lot 2.

**LOT
20**

RED BMB NUCLEATE 430N

2434909 | BMB 430N | FEBRUARY 4, 2025

RED LWNBRG SLOWBURN 102H
RED LWNBRG SLOWBURN 224K
RED LWNBRG FORCE 62G

RED U2 DOMINION
RED U2 FAVORITE 275F
RED LWNBRG FORCE 14E
RED LWNBRG AUTOMATIC 57D

RED BROWN JYJ REDEMPTION Y1334
RED BMB CH COLA 430G
RED BMB CH COLA 267Y

RED BECKTON NEBULA P P707(RED
RED JYJ MS JOLENE W16
RED BADLANDS NET WORTH 23
RED BRYLOR CH COLA 131P

BW	205D	E P D	BW	WW	YW	M	CE
98	696	D	2.5	49	88	21	-1

AOD 6 Yrs. WW 836 lbs Oct 15th.
Another Slowburn son who is well put together with structural soundness, length and plenty of shape and muscle with a weaning weight ratio of 101. Bull sold to Milk River Bull Club. Paternal Siblings Lots 1, 6 & 32.





**LOT
21**

RED BMB NORFOLK 441N

2343362 | BMB 441N | JANUARY 21, 2025

RED LAZY MC COWBOY CUT 26U
RED NCJ LAZY MC VENOM 34Z
RED HXC JOLENE 301N

RED DOUBLE C ELIXER 382E
RED BMB FANNY MAE 441G
RED BMB FANNY MAE 409Z

RED LAZY MC STOUT 30S
RED LAZY MC STAR 185M
RED BECKTON JULIAN GG B571
RED HXC JAYLO LB136

RED DOUBLE C BONANZA 415B
RED DOUBLE C ROCHELLE 152Z
RED U2 INDEED 198W
RED BMB FANNY 173X

BW	205D	E P D	BW	WW	YW	M	CE
99	711	D	3.6	56	92	22	-7

AOD 6 Yrs. WW 896 lbs Oct 15th.
Weaning Index of 103. Cow bull with a quiet disposition. Smooth, solid
bull from his shoulders back combined with added length. Halter broke.
Paternal Sibling Lot 11.

**LOT
22**

RED BMB NUTTY P 530N

2434820 | BMB 530N | FEBRUARY 13, 2025

RED U2 RETROSPECT 29E
RED MRLA RESPECT 42G
MRLA MISS 4408B

RR SCOTCHMAN 2999
BMB SCOTTISH ANNIE 530A
RED CRESCENT CREEK ANNIE 14M

RED U2 REVERENCE 198C
RED U2 ANEXA 226C
S A V HARVESTOR 0338
RED MRLA MISS 803R

E X A R SCTOCH CAP 816
ERICA LASSIE OF R R 8464
RED FOSTER CHIEF 7182ET
RED CRESCENT CREEK ANNIE 25F

BW	205D	E P D	BW	WW	YW	M	CE
99	760	D	4.3	49	82	30	-5

AOD 12 Yrs. WW 854 lbs Oct 15th.
Weaning index of 112. Sired by MRLA Respect 42G who is known to
sire attractive progeny with performance and maternal characteristics plus
carcass performance. You can not go wrong with this bull for a herdsire. Bull
sold to Long Grass Ranching.



**LOT
23**

RED BMB NASA 317N

2455668 | BMB 317N | FEBRUARY 27, 2025

RED RMJ REDMAN 1T
RED BMB KINGSMAN 546K
RED BMB BIEBIRD 546H

RED HOWE BOSS 79H
RED BMB FANNYJ 317L
RED BMB FANNY J 119W

RED 5L NORSEMAN KING 2291
CROWFOOT KURUBA 4033P
RED BRYLOR RED KODIAK 3A
RED CINDER BIEBIRD 18X

RED FLYING K BOSS 95C
RED HOWE MS ENVOIOUS 82Y
RED MEM RAMBLER 220T
RED BMB FANNY 22T

BW	205D	E P D	BW	WW	YW	M	CE
74	697		0.3	44	76	24	1



**HEIFER
BULL**



AOD 2 Yrs. WW 690 lbs Oct 15.
Weaning Index of 102. Well balanced, soft made, easy fleshing calving ease heifer bull.

**LOT
24**

RED BMB NAUTILUS 655N

2444608 | BMB 655N | FEBRUARY 27, 2025

RED W SUNRISE BANK NOTE 284G
RED BMB JERSEY 224J
RED BMB CATERINA 224E

RED DIAMOND T HIPS STOUT 107U
RED BMB DELIGHT 655B
RED BMB DELIGHT 67U

BLACK WHEEL BANK NOTE 16E
RED BROWN CREEK ELLIE 882U
RED BMB EDGE 625B
RED BMB CATERINA 862C

RED LAZY MC STOUT 30S
RED TOWAW MONIQUE 2K
RED MEADOW CK FREEDOM 34S
RED L4 DELIGHT 278P

BW	205D	E P D	BW	WW	YW	M	CE
97	731		2.4	39	63	25	-5



AOD 11 Yrs. WW 778 lbs Oct 15th
Weaning Index of 107. Soft ribbed, heavily muscled, loose hided, deep red herd bull candidate with a striking profile and solid foot shape. Bull sold to Heinrich Klassen.





**LOT
25**

RED BMB NUCLEUS 656N

2442725 | BMB 656N | FEBRUARY 20, 2025

RED REDRICH JUSTICE 240J
RED LAURON LEDGER 25L
RED LAURON BLACKBIRD 24G

RED BMB NORSE 382Z
RED BMB DELILA 656B
RED BMB DELILA 372Z

RED U2 EL CHAPO 76F
RED REDRICH FREY-EX 240F
RED BIEBER ROLLIN DEEP Y118
RED LAURON BLACKBIRD 3S

RED SSS NORSEMAN 412S
RED BMB SCARLETT 44T
RED BASIN SENSATION 702E
RED BMB DELIGHT 98W

BW	205D	E P D	BW	WW	YW	M	CE
68	646		-2	30	54	22	10



AOD 11Yrs. WW 705 lbs Oct 15th
Ledger has stamped his calves with attractive and correct phenotype. Nucleus boasts impressive gains on both the cow and as he matures. A definite heifer bull with extra depth and thickness. Dam has produced sons sold to Jason Statham, Pinhorn Grazing Assoc. & Hall Ranches Ltd.



**LOT
26**

RED BMB NORWIN 710N

PENDING | BMB 710N | FEBRUARY 28, 2025

RED REDRICH JUSTICE 240J
RED LAURON LEDGER 25L
RED LAURON BLACKBIRD 24G

RED W SUNRISE BANK NOTE 284G
RED BMB SHAWNEE 710J
RED ROCK POINT SHAWNEE 16F

RED U2 EL CHAPO 76F
RED REDRICH FREY-EX 240F
RED BIEBER ROLLIN DEEP Y118
RED LAURON BLACKBIRD 3S

BLACK WHEEL BANK NOTE 16E
RED BROWN CREEK ELLIE 882U
RED TRIPLE L JAGGER 18C
RED STOREBO SHAWNEE 79B

BW	205D	E P D	BW	WW	YW	M	CE
91	765		2.8	52	89	25	-1

AOD 4 Yrs. WW 826 lbs Oct 15th
Herd bull time here folks. Explosively powerful and growthy yet smooth and attractive. He is long spined and big topped. Bull sold to Hall Ranches Ltd.

**LOT
27**

RED BMB NORWAY 581N

2445378 | BMB 581N | JANUARY 30, 2025

RED KJHT POWER TAKE OFF
RED L83 RED VIPER 50K
RED L83 TINK 627D

RED LAZY MC SERGEANT 97Z
RED BMB MISTRESS 581H
RED BMB MISTRESS 504A

RED SOO LINE POWER EYE 161X
RED SRA PAINTBUCKET
RED SIX MILE SPENCER 111B
RED L83 TINK 118A

RED SSS SOLDIER 365W
RED LAZY MC GOLD DESIGN 68U
RED TR INVASION 18Y
RED BMB MISTRESS 260Y

BW	205D	E P D	BW	WW	YW	M	CE
95	630		3.3	38	63	25	-5

AOD 5 Yrs. WW 768 lbs Oct 15th.
Cherry red option with some extra stretch and growth. Smooth fronted and long spined bull here. Bull sold to Three Walking Sticks Ranching Co. Paternal Sibling Lot 28.



SIRE OF LOTS 27 & 28

**LOT
28**

RED BMB NEWPORT 776N

2445379 | BMB 776N | JANUARY 27, 2025

RED KJHT POWER TAKE OFF
RED L83 RED VIPER 50K
RED L83 TINK 627D

RED LONE STONE PRIME RIB 107Z
RED BMB CLASSY 776C
RED CINDER CLASSY 223A

RED SOO LINE POWER EYE 161X
RED SRA PAINTBUCKET
RED SIX MILE SPENCER 111B
RED L83 TINK 118A

RED GEIS PRIME RIB 411
RED ROYAL FREYJA 55M
RED SLGN X-FILES 006X
RED CINDER CLASSY 23W

BW	205D	E P D	BW	WW	YW	M	CE
99	723		3.9	49	85	23	-6

AOD 10 Yrs. WW 884 lbs Oct 15th.
Newport is a stout based, masculine specimen. Extra bold in his rib shape that carries down his spine. Bulls sold to Long Grass Ranching, Lomond Grazing, Murray Turner & Cam Owens. Halter broke. Paternal Sibling Lot 27.



DAM





HEIFER
BULL



DAM



SIRE

LOT
29

BLJ NORDIC 41N

2434296 | BLJ 41N | FEBRUARY 2, 2025

RED TR JAKE 7J
BMB LUTHER 54L
DELAR CONTENDER 54J

TR DELIBERATE 6J
BLJ MISS ELBA 41L
FLEMING 951 MISS ELBA

RED TOWAW JIVE 468E
RED TR MISS PATHY 9083G
RED RMJ REDMAN 1T
DELAR CONTENDER 54E

HBH HI DEF 168J
TR DIAMOND MIST 9013G
MAR CAPITALIST 474
FLEMING 907 MISS DYNA ELBA

BW	205D	E P D	BW	WW	YW	M	CE
77	760		0.6	56	96	25	1

AOD 2 Yrs. WW 865 lbs Oct 15th.
Weaning rate ratio of 112. This dam has blown it out of the park raising her first calf. "STUD MUFFIN" as Janessa calls him. Need we say anything more.

LOT
30

BLJ NAVY 205N

2444609 | BLJ 205N | MARCH 2, 2025(RC)

RED W SUNRISE BIG ROCK 365G
RED W SUNRISE BIG ROCK 890K
RED BROWN CRK MOLLY 1U 27X

KESSLERS COMMODORE 6516
FLEMING 205 JENA DAISY
FLEMING 810 JENA DAISY

RED SSS TYCOON 225E
RED WHEEL BRIDGET 2D
RED BRYLOR MASTER PLAN 17M
RED BROWN CREEK MOLLY 14R 1U

CONNEALY COMRADE 1385
KESSLERS RAINBOW 0595
R B TOUR OF DUTY 177
FLEMING 101 JENA DAISY

BW	205D	E P D	BW	WW	YW	M	CE
98	774		3.1	68	121	26	-1

AOD 3 Yrs WW 805 lbs Oct 15th.
Weaning rate ratio of 114. Here is a bull complete in his design from a nice head extension, top and middle, with hip and hair added to his presence and look. A bull that is the total package. His dam raised a whopper of a calf last year that sold to Izaak Wiebe and she has done it again. Paternal Sibling Lot 31



DAM

LOT
31

BLJ NAPA 4N

2441693 | BLJ 4N | MARCH 5, 2025(RC)

RED W SUNRISE BIG ROCK 365G
RED W SUNRISE BIG ROCK 890K
RED BROWN CRK MOLLY 1U 27X

RED SSS TYCOON 225E
RED WHEEL BRIDGET 2D
RED BRYLOR MASTER PLAN 17M
RED BROWN CREEK MOLLY 14R 1U

DWAJO VAULT 33E
RUSTIC LILY LYNN 4H
DWAJO LYNN 68B

BAR R BANKROLL 303E
DWAJO QUEEN GEM 62P
KG SURE SHOT 118E
DWAJO LYNN 142X

BW	205D	E P D	BW	WW	YW	M	CE
99	800		4.3	63	110	27	-5



SIRE OF LOTS 30 & 31



DAM

AOD 5 Yrs. WW 865 lbs Oct 15th.
Weaning rate ratio of 118. His dam was a purchase out of the Northern Select Sale and after 4 calves is designated an elite dam with an average weaning rate ratio of 115. This guy has a lot of power & presence. Paternal Sibling Lot 30

LOT
32

BLJ NATE 28N

2442007 | BLJ 28N | FEBRUARY 18, 2025(RC)

RED LWNBRG SLOWBURN 102H
RED LWNBRG SLOWBURN 224K
RED LWNBRG FORCE 62G

RED U2 DOMINION
RED U2 FAVORITE 275F
RED LWNBRG FORCE 14E
RED LWNBRG AUTOMATIC 57D

SHILOH GOLIATH 3G
BLJ ERICA 28J
BLJ ERICA 22F

SOUTH SHADOW 6Y TOMBOY 130B
TANNAS PATTIE QUEEN 54E
RED HOWE SYPDER 20D
BLJ ERICA 74D

BW	205D	E P D	BW	WW	YW	M	CE
84	658		0.6	43	75	20	4



DAM

**HEIFER
BULL**

AOD 4 Yrs. WW 735 Oct 15th.
Another Slowburn brother from a different mother and a different colour with all the same great attributes as his paternal siblings.
Paternal Siblings Lots 1, 6 & 20

LOT
33

BLJ NIGEL 951N

2434159 | BLJ 951N | FEBRUARY 28, 2025

KENRAY MERIT RED BOSS 31H
BMB RANGO 20K
RED KENRAY KANNA 20H

BAR S RANGE BOSS 400Z
RED CINDER FREYJA 29E
RED KENRAY STAUNCH 61D
RED KENRAY KANNA 160F

MAR CAPITALIST 474
FLEMING 951 MISS ELBA
FLEMING 907 MISS DYNA ELBA

CONNEALY CAPITALIST 028
CAR MISS AMY 591
GARRISON 8128 DYNAMITE
FLEMING 358 MISS ELBA

BW	205D	E P D	BW	WW	YW	M	CE
94	693		0.8	45	73	25	3

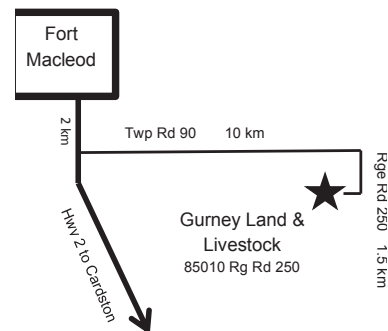


SIRE OF LOTS 12 & 33



DAM

AOD 6 Yrs. WW 763 lbs Oct 15th.
Weaning rate ratio of 101. Lots of style and natural thickness on a good foot. Smooth fronted with great skull structure. His sire was an in purchase from Kenray Ranch at Red Round-up. We have been pleased with his offspring. Paternal Sibling Lot 12.



We are very happy to welcome you to our 14th annual bull sale! What an exciting time to be in the cattle business. Cattlemen are getting paid for their hard work and time spent raising a product the world needs! Our vision and goals remain the same. To produce sound, functional cattle that will be an asset to your herd's productivity and success. We focus on maternal, growth, and carcass qualities with a desire to improve foot and leg structure. Docility and calving ease are also a high priority for our family's safety and yours. We feel this year's set of bulls has really raised the bar for quality and soundness. We have strived to source A.I. Bulls and walking herd sires that will improve the cow herd, whether it be foot quality and leg structure, udder structure, or maternal ability. And of course, performance. Either weaning and yearling weights or carcass and finishing weights.

New this year, we are selling a group of replacement heifers right from our Purebred herd. They will be selling as commercials. They come from the same sire groups as the bulls in this year's offering. We feel they would be a great addition to anyone's herd. They'd be in my herd if we only had more grass for them.

We are very thankful to our customers, neighbours, and friends for your trust and confidence in our program. We strive to earn and keep your business by providing the very best bulls possible and customer service to match. We look forward to seeing you on sale day and invite you to come anytime prior to the sale to view the bulls and their dams at the farm.

Wes & Carolyn Gurney

403-308-2473

www.gurneyangus.com

Fort Macleod AB.

85010 Range Road 250

Herd Health Management

We strive to provide our herd with the best possible feed ingredients and health protocols to ensure optimal health and growth throughout their lives. At birth, the calves are given Inforce 3 and Vit ADE and weighed within 24 hours of birth. Before we turn out in early June, the calves are given Pyramid FPS with Presponse, Fermicon 7/Somnugen, and Longe Range and DNA samples are taken to parent verify the calves to their parents. During the summer months, the calves only have grass and mother's milk with a mineral/Vitamin tubs to lick. We don't creep feed our calves. We feel this is the best way to evaluate the actual growth and potential genetics of these calves and their dams. This year the bull calves were weaned on October 1st 2025. We give them booster shots of Pyramid FPS and Fermicon, as well as Ivermectin or Cylence, pour on. At this time weaning weights are taken. We feed alfalfa silage to our herd and start the bulls on an alfalfa silage/Timothy ration to begin. We then introduce a pellet ration from Bullseye Feeds into the ration. We slowly increase the pellet ration to 1% of the body weight of the animal and eliminate Timothy from the ration. We feel this ration helps the bulls to grow into their genetic potential, without pushing them too hard and burning them out which would reduce their long-term breeding potential. All bulls are semen tested by the wonderful staff at Fort Macleod Vet Clinic a few weeks before sale day. At this time the bulls are given their first shot of Fusoguard for prevention of foot rot. The booster shot is given right before sale day.

Reference Sires

BASIN JAMESON 1076

2310585 | IMP 1076J | JANUARY 18, 2021

BASIN ADVANCE 3134
BASIN DEPOSIT 6249
BASIN LUCY 4288

G A R PROGRESS
BASIN O LASS 1663
EXAR DENVER 2002B
BASIN LUCY 1037

EXAR MONUMENTAL 6056B
BASIN JOY 9140
BASIN JOY 5367

3F EPIC 4631
FWY 7008 OF C085 4029
BASIN RAINMAKER P175
BASIN JOY 1036

BW	WW	YW	E P D	BW	WW	YW	M	CE
70	834	1352		2.2	105	167	30	8



DWAJO COALITION 79K

2300184 | DJE 79K | FEBRUARY 12, 2022

HF SYNDICATE 213Z
U2 COALITION 206C
U2 ERELITE 109Z

CONNELLY CONSENSUS 7229
HF MISS BLACKCAP 27R
YOUNG DALE XCLUSIVE 25X
U2 ERELITE 1X

DWAJO FINAL DOMINATION 33X
DWAJO JESTRESS 119Z
DWAJO JESTRESS 122X

SIX MILER FINAL ANSWER 701T
DWAJO ZARA 144T
FRL IMAGE MAKER 543R
DWAJO JESTRESS 59M

BW	WW	YW	E P D	BW	WW	YW	M	CE
82	762	1366		1.4	42	84	27	6



CRESCENT CREEK BIG STEP 19K

2264427 | WOS 19K | JANUARY 10, 2022

CAR NEXT STEP 889
CRESCENT CREEK NEXT STEP 4H
CRESCENT CREEK ROSEBUD 163D

PRAIRIE PRIDE NEXT STEP 2036
CAR MISS SUSIE 060
CHAPMAN MEMENTO 3589A
CRESCENT CREEK ROSEBUD 66Y

CHAPMAN MEMENTO 3589A
CRESCENT CREEK JOAN 7E
CRESCENT CREEK JOAN 48Y

CHAPMAN MEMENTO 0505X
CHAPMAN KAWICH LADY 8065U
SITZ DASH 10277
GDAR JOAN 9175

BW	WW	YW	E P D	BW	WW	YW	M	CE
78	719	1170		-0.8	46	80	29	10



RED WHEEL HONCHO 11J

2241979 | MFW 11J | JANUARY 10, 2021

RED FLYING K MAX 153Y
RED FLYING K BOSS 95C
RED FLYING K MS. DIADEM 100X

RED ML MAX 862U
RED FLYING K LASSIE 37S
RED THAT'LL DO DIADEM 7D
RED MCRAES KERI 9J

LFE BA LEWIS 3008B
RED WHEEL AUBRUN 19E
RED WHEEL AUBURN 77B

JL KELLY 2232
LFE BA JESTRESS 2007W
RED BAR-E-L APPROVAL 4L
RED WHEEL AUBRUN 2K

BW	WW	YW	E P D	BW	WW	YW	M	CE
78	735	-		-1.3	41	77	30	10





**LOT
34**

GURNEY JAMESON 5N

2407478 | WCG 5N | JANUARY 12, 2025

BASIN DEPOSIT 6249
BASIN JAMESON 1076
BASIN JOY 9140

PA POWER TOOL 9108
GURNEY DYNA LADY LYN 30C
SOUTHERN DYNA LADY LYN 79Z

BASIN ADVANCE 3134
BASIN LUCY 4288
EXAR MONUMENTAL 6056B
BASIN JOY 5367

G A R PREDESTINED
SHAMROCKS BEEBEE QUEEN 3095
O G L BATTLE CRY 427 128
K.D.F DYNA LADY LYN 47P

BW	205D	E P D	BW	WW	YW	M	CE
89	716	D	1.1	70	116	29	8

- AOD 11 Yrs
- Lifetime progeny (9) actual BW's Male 93 lbs, Female 74 lbs
- 1 Bull sold to Diamond 8 Cattle Co.
- 1 Daughter Elite/Premier Dam retained in herd
- AWW 890 lbs Oct 1st - YW 1200 lbs Jan 5th
- Wean to Yearling ADG 3.23 lbs/day

LARGE HEIFERS/COW BULL

**LOT
35**

GURNEY RAINMAKER 9N

2407481 | WCG 9N | JANUARY 13, 2025

BASIN RAINMAKER 2704
BASIN RAINMAKER 4404
ELBANNA OF CONANGA

GURNEY CHINOOK 10J
GURNEY TILDA 47L
GURNEY TILDA 49H

BASIN RAINMAKER P175
BASIN ERICA 7520 BV
BASIN PAYWEIGHT 107S
BASIN JOY 566T

SHIPWHEEL CHINOOK
GURNEY TIBBIE 44G
HF HOT LOTTO 183D
GURNEY TILDA 49E

BW	205D	E P D	BW	WW	YW	M	CE
81	713	D	1.8	59	105	26	4

- AOD 3 Yrs
- AWW 792lbs Oct 1st
- YW 1095lbs Jan 5th
- Wean to Yearling ADG 3.16 lbs/day

HEIFER BULL



**HEIFER
BULL**

SIRE



**LOT
36**

GURNEY TOP GUN 12N

2407484 | WCG 13N | JANUARY 13, 2025

V A R FIRE POWER
SCHIEFELBEIN TOP GUN 522
FROSTY ELBA 4220

SYDGEN ENHANCE
GURNEY DYNA LADY LYN 5G
GURNEY DYNA LADY LYN 2E

V A R POWER PLAY 7018
VINTAGE RITA 5063
SCHIEFELBEIN SHOWMAN 338
FROSTY BISMARCK 3041

SYDGEN EXCEED 3223
SYDGEN RITA 2618
H A IMAGE MAKER 0415
GURNEY DYNA LADY LYN 30C

BW	205D	E P D	BW	WW	YW	M	CE
92	739		1.3	77	141	23	6

SIRE OF LOTS 36 & 37

COW BULL

- AOD 7 Yrs
- Lifetime progeny (5) actual BW's Male 88 lbs, Female 76 lbs
- 1 Bull sold to Diamond 8 Cattle Co.
- 2 Daughters retained in herd
- AWW 916 lbs Oct 1st
- YW 1250 lbs Jan 5th
- Wean to Yearling ADG 3.48 lbs/day

**LOT
37**

GURNEY TOP GUN 10N

2407482 | WCG 10N | JANUARY 13, 2025

V A R FIRE POWER
SCHIEFELBEIN TOP GUN 522
FROSTY ELBA 4220

GURNEY ENHANCE 3G
GURNEY ERELITE 74J
GURNEY ERELITE 6F

V A R POWER PLAY 7018
VINTAGE RITA 5063
SCHIEFELBEIN SHOWMAN 338
FROSTY BISMARCK 3041

SYDGEN ENHANCE
GURNEY NEW LASSIE 11E
TRIPLE E MATRIX 908
GURNEY ERELITE 56A

BW	205D	E P D	BW	WW	YW	M	CE
89	780		1.8	74	130	23	5



COW BULL

- AOD 5 Yrs
- Lifetime Progeny (3) Actual BW's Male 80 lbs
- 2 Bulls sold in Annual Bull Sale
- AWW 948 lbs Oct 1st
- YW 1305 lbs Jan 5th
- Wean to Yearling ADG 3.72 lbs/day



**LOT
38**

GURNEY COALITION 25N
2407497 | WCG 25N | JANUARY 16, 2025

U2 COALITION 206C
DWAJO COALITION 79K
DWAJO JESTRESS 119Z

CTS REMEDY 1T01
GURNEY TILDA 7K
GURNEY TILDA 43E

HF SYNDICATE 213Z
U2 ERELITE 109Z
DWAJO FINAL DOMINATION 33X
DWAJO JESTRESS 122X

CONNEALY THUNDER
CTS 7V03 BELLEMERE MAID 9T02
LLB ELIMINATOR 316B
GURNEY TILDA 72Z

- HEIFER BULL**
- AOD 4 Yrs
 - Lifetime progeny (2) actual BW's male 77 led, Female 62 lbs
 - 1 daughter retains in herd
 - AWW 720 lbs Oct 1st
 - YW ADG 95 lbs
 - Wean to Yearling ADG 2.86 lbs/day

BW	205D	E P D	BW	WW	YW	M	CE
77	626		-1.8	34	73	23	9



**LOT
39**

GURNEY JAMESON 16N
2407487 | WCG 16N | JANUARY 14, 2025(TW)

BASIN DEPOSIT 6249
BASIN JAMESON 1076
BASIN JOY 9140

HF HOT LOTTO 183D
GURNEY TILDA 49H
GURNEY TILDA 49E

BASIN ADVANCE 3134
BASIN LUCY 4288
EXAR MONUMENTAL 6056B
BASIN JOY 5367

BSF HOT LOTTO 1401
HF MISS BLACKCAP 27R
GURNEY IRON MOUNTAIN 40Z
GURNEY TILDA 22W

BW	205D	E P D	BW	WW	YW	M	CE
77	682		2.1	77	128	25	4

- HEIFER BULL**
- AOD 6 Yrs
 - Lifetime progeny (6) actual BW's Male 75 lbs, Female 82 lbs
 - 3 Bulls sold Rock Creek, Curtis Delver, Bill McNab
 - 1 Daughter retained in herd
 - AWW weight 844 lbs Oct 1st
 - YW 1115 lbs Jan 5th
 - Wean to Yearling ADG 2.82 lbs/day

**LOT
40**

GURNEY ELEMENT 28N

2407498 | WCG 28N | JANUARY 17, 2025(TW)

W SUNRISE ELEMENT 134F
GURNEY ELEMENT 13K
SOUTHERN BARBARA BEA 86Z

BARTELS ELEMENT 1028 651
HF BLOSSOM 30D
W H S LIMELIGHT 64V
KDF BLACKCAP 2N

KM BROKEN BOW 002
GURNEY LADY TIPTOP 22J
GURNEY LADY TIPTOP 64G

SUMMITCREST COMPLETE 1P55
SUMMITCREST PRINCESS 0P12
HF COWBOY'S CREED 236E
SOUTHERN LADY TIPTOP 14Z

BW	205D	E P D	BW	WW	YW	M	CE
70	699	D	0.8	54	97	29	4



- AOD 5 Yrs
- Lifetime progeny (4) actually BW's Male 70 lbs, Female 70 lbs
- 2 Daughters retained in herd
- AWW 838 lbs Oct 1st - YW 1145 lbs Jan 5th
- Wean to Yearling ADG 3.20 lbs/day

HEIFER BULL

**LOT
41**

GURNEY COLOSSAL 32N

2407499 | WCG 32N | JANUARY 17, 2025

LD CAPITALIST 316
MUSGRAVE 316 COLOSSAL137
MUSGRAVE LADY BARBARA 545

CONNEALY CAPITALIST 028
LD DIXIE ERICA 2053
MUSGRAVE BIG SKY
MUSGRAVE LADY BARBARA 272

S ARCHITECT 9501
GURNEY BIRD 28L
GURNEY BIRD 10E

SYDGEN BLUEPRINT
S BLOSSOM 7514
EBON HILL 462 UPWARD 27'15
GURNEY BIRD 84Z

BW	205D	E P D	BW	WW	YW	M	CE
92	777	D	2.4	70	119	23	2



- AOD 3 Yrs
- AWW 858 lbs Oct 1st
- YW 1055 lbs Jan 5th
- Wean to Yearling ADG 2.05 lbs/day

COW BULL



**LOT
42**

GURNEY COALITION 36N

2407537 | WCG 36N | JANUARY 18, 2025(TW)

U2 COALITION 206C
DWAJO COALITION 79K
DWAJO JESTRESS 119Z

HF SYNDICATE 213Z
U2 ERELITE 109Z
DWAJO FINAL DOMINATION 33X
DWAJO JESTRESS 122X

DEER VALLEY GROWTH FUND
GURNEY BEAUTY 26K
REMITALL F BEAUTY 38F

BASIN PAYWEIGHT 1682
DEER VALLEY RITA 36113
SAV TEN SPEED 3022
REMITALL F BEAUTY 263D

BW	205D	E P D	BW	WW	YW	M	CE
73	704	D	1.9	58	110	25	5.5



- AOD 4 Yrs
- Lifetime progeny (3) actual BW's Male 73 lbs, Female 78 lbs
- 1 Daughter retained in herd
- AWW 814 lbs Oct 1st - YW 1040 lbs Jan 5th
- Wean to Yearling ADG 2.35 lbs/day

HEIFER BULL



**LOT
43**

GURNEY JAMESON 38N

2407504 | WCG 38N | JANUARY 18, 2025

BASIN DEPOSIT 6249
BASIN JAMESON 1076
BASIN JOY 9140

BASIN ADVANCE 3134
BASIN LUCY 4288
EXAR MONUMENTAL 6056B
BASIN JOY 5367

LLB ELIMINATOR 316B
GURNEY TILDA 43E
GURNEY TILDA 72Z

PEAK DOT ELIMINATOR 765Z
LLB BARBARA ROSE 208Z
REMINGTON HEADS UP 410T
REMINGTON TILDA 8P

BW	205D	E P D	BW	WW	YW	M	CE
83	704		-0.2	63	108	29	8

- AOD 12 Yrs
- Lifetime progeny (7) actual BW's Male 83 lbs, Female 74 lbs
- 2 Daughters retained in herd
- Bulls sold to Fred McGlynn, Outback Ranch, McNab Cattle Co.
- AWW 894 lbs Oct 1st - YW 1225 lbs Jan 5th
- Wean to Yearling ADG 3.45 lbs/day

HEIFER BULL



**LOT
44**

GURNEY RAINMAKER 41N

2407507 | WCG 41N | JANUARY 20, 2025

BASIN RAINMAKER 2704
BASIN RAINMAKER 4404
ELBANNA OF CONANGA

BASIN RAINMAKER P175
BASIN ERICA 7520 BV
BASIN PAYWEIGHT 107S
BASIN JOY 566T

SITZ RESILIENT 10208
GURNEY TILDA 12L
GURNEY TILDA 72Z

SITZ STELLAR 726D
SITZ MISS BURGESS 1856
REMINGTON HEADS UP 410T
REMINGTON TILDA 8P

BW	205D	E P D	BW	WW	YW	M	CE
91	779		2.7	63	109	28	2

- AOD 3 Yrs
- AWW 852 lbs Oct 1st
- YW 1190 lbs Jan 5th
- Wean to Yearling ADG 3.52 lbs/day

COW BULL

**LOT
45**

GURNEY JAMESON 42N

2407508 | WCG 42N | JANUARY 20, 2025

BASIN DEPOSIT 6249
BASIN JAMESON 1076
BASIN JOY 9140

BASIN ADVANCE 3134
BASIN LUCY 4288
EXAR MONUMENTAL 6056B
BASIN JOY 5367

REMINGTON HEADS U 410T
GURNEY TILDA 72Z
REMINGTON TILDA 8P

SUMMIT ANGUS HEADS UP 17
REMINGTON BARBARA 103P
BON VIEW NEW DESIGN 1407
WIWA CREEK TILDA 32C 65'96

BW	205D	E P D	BW	WW	YW	M	CE
89	737		1.8	63	100	28	7

- AOD 14 Yrs
- Lifetime progeny (12) actual BW's Male 80 lbs, Female 75lbs
- 6 Daughters retained in herd
- 1 Bull sold to Reners Farm
- AWW 858 lbs Oct 1st - YW 1130 lbs Jan 5th
- Wean to Yearling ADG 2.83 lbs/day

HEIFER BULL





**LOT
46**

GURNEY JAMESON 44N

2407510 | WCG 44N | JANUARY 21, 2025

BASIN DEPOSIT 6249
BASIN JAMESON 1076
BASIN JOY 9140

HF COWBOY'S CREED 236E
GURNEY LADY TIPTOP 64G
GURNEY LADY TIPTOP 14Z

BASIN ADVANCE 3134
BASIN LUCY 4288
EXAR MONUMENTAL 6056B
BASIN JOY 5367

HA COWBOY UP 5405C
HF ANNIE K 28Z
WHS LIMELIGHT 64V
LLB LADY TIPTOP 217L

BW	205D	EPD	BW	WW	YW	M	CE
101	721		4.1	72	129	27	3

- AOD 7 yrs
- Lifetime progeny (5) actual BW's Male 94 lbs, Female 78 lbs
- 2 Daughters retained in Herd
- AWW 866 lbs Oct 1st - YW 1200 lbs Jan 5th
- Wean to Yearling ADG 3.48 lbs/day

COW BULL

**LOT
47**

GURNEY BIG STEP 55N

2407518 | WCG 55N | JANUARY 25, 2025

CRESCENT CREEK NEXT STEP 4H
CRESCENT CREEK BIG STEP 19K
CRESCENT CREEK JOAN 7E

DEER VALLEY PATRIOT 3222
GURNEY BARBARA 25H
GURNEY BARBARA 59F

CAR NEXT STEP 889
CRESCENT CREEK ROSEBUD 163D
CHAPMAN MEMENTO 3589A
CRESCENT CREEK JOAN 48Y

CONNEALY CAPITALIST 028
DEER VALLEY RITA 0274
LLB ELIMINATOR 316B
SOUTHERN BARBARA BEA 86Z

BW	205D	EPD	BW	WW	YW	M	CE
75	738		-2.9	54	96	26	14

- AOD 6 Yrs
- Top 1% CE & BW EPD's
- Lifetime Progeny (4) actual BW's Male 75 lbs, Female 71 lbs
- 1 Daughter retained in herd
- AWW 880 lbs Oct 1st - YW 1155 lbs Jan 5th
- Wean to Yearling ADG 2.86 lbs/day

HEIFER BULL



**HEIFER
BULL**



**LOT
48**

GURNEY BIG STEP 64N

2407567 | WCG 64N | JANUARY 27, 2025

CRESCENT CREEK NEXT STEP 4H
CRESCENT CREEK BIG STEP 19K
CRESCENT CREEK JOAN 7E

W SUNRISE EXECUTIVE LAW 507H
CRESCENT CREEK ERICA 27L
CRESCENT CREEK ERICA 39D

CAR NEXT STEP 889
CRESCENT CREEK ROSEBUD 163D
CHAPMAN MEMENTO 3589A
CRESCENT CREEK JOAN 48Y

PM EXECUTIVE DECISION 5'17
HF TIBBIE 27D
MC CUMBER 8R101 RITO 1136
CRESCENT CREEK ERICA 46T

- AOD 3 Yrs
- AWW 820 lbs Oct 1st
- YW 1100 lbs Jan 5th
- Wean to Yearling ADG 2.92 lbs/day

HEIFER/COW BULL

BW	205D	E P D	BW	WW	YW	M	CE
83	704	D	-0.2	63	108	29	8



**LOT
49**

GURNEY BIG STEP 59N

2407519 | WCG 59N | JANUARY 26, 2025

CRESCENT CREEK NEXT STEP 4H
CRESCENT CREEK BIG STEP 19K
CRESCENT CREEK JOAN 7E

YOUNG DALE ZORIAN 106Z
WWF ZORIAN BLACKBIRD 51L
WWF UPPER CUT BLACKBIRD 174D

CAR NEXT STEP 889
CRESCENT CREEK ROSEBUD 163D
CHAPMAN MEMENTO 3589A
CRESCENT CREEK JOAN 48Y

YOUNG DALE XCALIBER 32X
YOUNG DALE POLLYANNA 78S
WINDY WILLOWS UPPER CUT 44Y
WWF QUANTUM BLACKBIRD 191Y

BW	205D	E P D	BW	WW	YW	M	CE
85	709	D	1.5	48	80	24	4

- AOD 3 Yrs
- AWW 750 lbs Oct 1st
- Wean to Yearling ADG 3.02 lbs/day

HEIFER BULL

- YW 1040 lbs Jan 5th

**LOT
50**

GURNEY ELEMENT 65N

2407568 | WCG 65N | JANUARY 27, 2025

W SUNRISE ELEMENT 134F
GURNEY ELEMENT 13K
SOUTHERN BARBARA BEA 86Z

TRIPLE E MATRIX 908
GURNEY ERELITE 6F
GURNEY ERELITE 56A

BARTELS ELEMENTS
HF BLOSSOM 30D
W H S LIMELIGHT 64V
KDF BLACKCAP 2N

N BAR EMULATION EXT
JAYNBEE WENDY 728B
CHICO XCESS 12X
GURNEY ERELITE 36Y

BW	205D	E P D	BW	WW	YW	M	CE
79	618		-0.6	35	58	25	8



- AOD 8 Yrs
- Lifetime progeny (6) actual BW's Male 75lbs, Female 69 lbs
- AWW 728 lbs Oct 1st - YW 1010 lbs Jan 5th
- Wean to Yearling ADG 2.94 lbs/day

HEIFER BULL

**LOT
51**

GURNEY ELEMENT 67N

2407570 | WCG 67N | JANUARY 29, 2025

W SUNRISE ELEMENT 134F
GURNEY ELEMENT 13K
SOUTHERN BARBARA BEA 86Z

CONNEALY CONSENSUS 7229
HF LICORICE 107B
HF LICORICE 154N

BARTELS ELEMENTS
HF BLOSSOM 30D
W H S LIMELIGHT 64V
KDF BLACKCAP 2N

CONNEALY CONSENSUS
BLUE LILLY OF CONANGA 16
HF PROGRESS 20K
HF LICORICE 19L

BW	205D	E P D	BW	WW	YW	M	CE
85	663		0.4	43	75	24	3



- AOD 12 Yrs
- Lifetime progeny (1) actual BW's male 89 lbs, Female 83 lbs
- 2 Bulls sold & 2 Daughters retained in herd
- AWW 744 lbs Oct 1st - YW 1025 lbs Jan 5th
- Wean to Yearling ADG 2.93 lbs/day

COW BULL

**LOT
52**

GURNEY BIG STEP 75N

2440905 | WCG 75N | FEBRUARY 4, 2025

CRESCENT CREEK NEXT STEP 4H
CRESCENT CREEK BIG STEP 19K
CRESCENT CREEK JOAN 7E

SITZ RESILIENT 10208
GURNEY NEW LASSIE 15L
GURNEY NEW LASSIE 11E

CAR NEXT STEP 889
CRESCENT CREEK ROSEBUD 163D
CHAPMAN MEMENTO 3589A
CRESCENT CREEK JOAN 48Y

SITZ STELLAR 726D
SITZ MISS BURGESS 1856
WR JOURNEY-1X74
BENCHMARK NEW LASSIE 77'15

BW	205D	E P D	BW	WW	YW	M	CE
81	703		-0.7	49	87	29	9



- AOD 3 Yrs
- Top 10% CE
- AWW 720 lbs Oct 1st - YW 980 lbs Jan 5th
- Wean to Yearling ADG 2.71 lbs/day

HEIFER BULL



**LOT
53**

JG BIG STEP 79N

2407696 | JWG 79N | FEBRUARY 7, 2025

CRESCENT CREEK NEXT STEP 4H
CRESCENT CREEK BIG STEP 19K
CRESCENT CREEK JOAN 7E

CAR NEXT STEP 889
CRESCENT CREEK ROSEBUD 163D
CHAPMAN MEMENTO 3589A
CRESCENT CREEK JOAN 48Y

TRIPLE E MATRIX 908
GURNEY ERICA 29F
GH ADAMS COVER ERICA 451X

N BAR EMULATION EXT
JAYNBEE WENDY 728B
GH COVERBOY ERIC 110R
GH ERICA COMMANDA 205S

BW	205D	E P D	BW	WW	YW	M	CE
83	706		-0.2	49	83	23	9

HEIFER BULL

- AOD 8 Yrs
- Top 10% CE
- Lifetime progeny (6) actual BW's Male 75 lbs, Female 67 lbs
- Bulls sold to Russ Friesen, Shane Miller
- 2 Daughters retained in herd
- AWW 800 lbs Oct 1st - YW 1070 lbs Jan 5th
- Wean to Yearling ADG 2.81 lbs/day



**LOT
54**

GURNEY COALITION 86N

2407596 | WCG 86N | FEBRUARY 11, 2025

U2 COALITION 206C
DWAJO COALITION 79K
DWAJO JESTRESS 119Z

HF SYNDICATE 213Z
U2 ERELITE 109Z
DWAJO FINAL DOMINATION 33X
DWAJO JESTRESS 122X

DEER VALLEY GROWTH FUND
GURNEY ERELITE 1K
GURNEY ERELITE 6F

BASIN PAYWEIGHT 1682
DEER VALLEY RITA 36113
TRIPLE E MATRIX 908
GURNEY ERELITE 56A

BW	205D	E P D	BW	WW	YW	M	CE
86	718		0.8	51	94	25	7

HEIFER BULL

- AOD 4 Yrs
- Top 20% CE
- Lifetime Progeny (2) actual BW's Male 86 lbs, Female 69 lbs
- AWW 758 lbs Oct 1st - YW 995 lbs Jan 5th
- Wean to Yearling ADG 2.47 lbs/day



**LOT
55**

GURNEY BIG STEP 88N

2407599 | WCG 88N | FEBRUARY 14, 2025(TW)

CRESCENT CREEK NEXT STEP 4H
CRESCENT CREEK BIG STEP 19K
CRESCENT CREEK JOAN 7E

CAR NEXT STEP 889
CRESCENT CREEK ROSEBUD 163D
CHAPMAN MEMENTO 3589A
CRESCENT CREEK JOAN 48Y

HF HOT LOTTO 183D
GURNEY MAY 68F
GURNEY MAY45C

BSF HOT LOTTO 1401
HF MISS BLACKCAP 27R
BROWN CRK HOOVER DAM 41Z
GH ADAMS 704U MAY 146X

BW	205D	E P D	BW	WW	YW	M	CE
64	660		0.8	48	83	30	7

HEIFER/COW BULL

- AOD 12 Yrs
- Lifetime Progeny (7) actual BW's Male 77 lbs, Female 90 lbs
- 1 Daughter retained in herd
- AWW 730 lbs Oct 1st - YW 1005 lbs Jan 5th
- Wean to Yearling ADG 2.86 lbs/day



**LOT
56**

GURNEY COALITION 87N
2407597 | WCG 87N | FEBRUARY 13, 2025

U2 COALITION 206C
DWAJO COALITION 79K
DWAJO JESTRESS 119Z

K C F BENNETT ASSERTIVE
GURNEY BLACKCAP 27J
EBON HILL BLACKCAP 319'14

HF SYNDICATE 213Z
U2 ERELITE 109Z
DWAJO FINAL DOMINATION 33X
DWAJO JESTRESS 122X

K C F BENNETT ABSOLUTE
K C F MISS HOMESTEAD Z98
BPRF VANCE 213
EBON HILL BLACKCAP 219'12

BW	205D	E P D	BW	WW	YW	M	CE
92	780	D	1	55	101	26	6

- AOD 5 Yrs
- Lifetime progeny (3) actual BW's Male 92 lbs, Female 66 lbs
- 1 Bull sold TNT Ranch, 1 Daughter retained in herd
- AWW 846 lbs Oct 1st - YW 1110 lbs Jan 5th
- Wean to Yearling ADG 2.75 lbs/day

COW BULL

**LOT
57**

GURNEY BIG STEP 96N
2407613 | WCG 96N | FEBRUARY 26, 2025

CRESCENT CREEK NEXT STEP 4H
CRESCENT CREEK BIG STEP 19K
CRESCENT CREEK JOAN 7E

SQUARE B TRUE NORTH 8052
GURNEY BAND 24K
GURNEY BAND 1H

CAR NEXT STEP 889
CRESCENT CREEK ROSEBUD 163D
CHAPMAN MEMENTO 3589A
CRESCENT CREEK JOAN 48Y

SAV RAINFALL 6846
ELBANNA OF CONANGA 1209
MUSGRAVE 316 STUNNER
GURNEY BAND 55D

BW	205D	E P D	BW	WW	YW	M	CE
95	791	D	1	56	100	29	5

- AOD 4 Yrs
- Lifetime progeny (2) actual BW's Male 86 lbs
- AWW 792 lbs Oct 1st - YW 1075 lbs Jan 5th
- Wean to Yearling ADG 2.95 lbs/day

COW BULL





**LOT
58**

GURNEY ASTRO 56N

2441176 | WCG 56N | JANUARY 26, 2025(RC)

HF TIGER 5T
MCGOWAN ASTRO 12A
RED HF TIBBIE 203U

HF KODIAK 5R
HF ECHO 84R
HF PROGRESS 84N
HF TIBBIE 69P

RED SIX MILE LAWMAN 267H
RED MCGOWAN LASS 4L
RED HOWE LASS 10G

RED CC LAWMAN 32E
RED SIX MILE ANNIE B 174B
RED U2 HEAD GAMES 330E
RED HOWE LASS 206E

BW	205D	EPD	BW	WW	YW	M	CE
70	695		-2	38	68	27	11

- AOD 3 Yrs
- Top 5% CE & BW EPD's
- AWW 736 lbs Oct 1st
- Wean to Yearling ADG 2.44 lbs/day
- HEIFER BULL**
- Black/Red Carrier Bull
- YW 970 lbs Jan 5th



**LOT
59**

GURNEY HONCHO 58N

2407535 | WCG 58N | JANUARY 26, 2025(RC)

RED FLYING K BOSS 95C
RED WHEEL HONCHO 11J
RED WHEEL AUBURN 19E

RED FLYING K MAX 153Y
RED FLYING K MS. DIADEM 100X
LFE BA LEWIS 3008B
RED WHEEL AUBURN 77B

GURNEY MAKER 1E
GURNEY TILDA 36G
GURNEY TILDA 49E

H A IMAGE MAKER 0415
HF ROSEBUD 164B
GURNEY IRON MOUNTAIN 40Z
GURNEY TILDA 22W

BW	205D	EPD	BW	WW	YW	M	CE
89	769		-0.8	51	90	27	7

- AOD 7 Yrs
- Black/Red Carrier Bull
- Lifetime progeny (5) actual BW's Male 88 lbs, Female 95 lbs
- 1 Bull sold & 1 Daughter retained in herd
- AWW 912 lbs Oct 1st
- Wean to Yearling ADG 3.05 lbs/day
- HEIFER BULL/LARGER HEIFERS**
- YW 1205 lbs Jan 5th



**LOT
60**

GURNEY BIG STEP 69N

2441174 | WCG 69N | JANUARY 30, 2025(RC)

CRESCENT CREEK NEXT STEP 4H
CRESCENT CREEK BIG STEP 19K
CRESCENT CREEK JOAN 7E

CAR NEXT STEP 889
CRESCENT CREEK ROSEBUD 163D
CHAPMAN MEMENTO 3589A
CRESCENT CREEK JOAN 48Y

RED WHEEL HONCHO 11J
RED GURNEY ENVIOUS 66L
RED U2 ENVIOUS 441F

RED FLYING K BOSS 95C
RED WHEEL AUBURN 19E
RED U2 RIFF 1213C
RED PACIFIC ENVIOUS 11C

BW	205D	EPD	BW	WW	YW	M	CE
77	725		-0.7	49	90	26	9

- AOD 3 Yrs
- Black/Red Carrier Bull
- AWW 760 lbs Oct 1st
- Wean to Yearling ADG 2.55 lbs/day
- HEIFER BULL**
- YW 1005 lbs Jan 5th



**LOT
61**

RED GURNEY MERLIN 22N

2407490 | WCG 22N | JANUARY 14, 2025

RED LJC MERLIN T179
RED WFL MERLIN 018A
RED WFL COMMITMENT 042Y

RED BIEBER CL STOCKMARKET E 119
RED GURNEY DUCHESS 33K
RED GURNEY DUCHESS 38H

RED LJC MISSION STATEMENT P27
RED BUF CRK REDPRIDE N179
RED BROWN COMMITMENT S7206
RED WFL JEWELMAKER 9024

RED PIE STOCKMAN 4051
RED BIEBER CL ADELLE 475C
RED U2 MALBEC 104F
RED U2 DUCHESS 607F

BW	205D	E P D	BW	WW	YW	M	CE
82	788		-1.7	70	112	34	11

- AOD 4 Yrs
- Lifetime Progeny (3) actual BW's Male 82 lbs
- AWW 926 lbs Oct 1st
- Weaning to Yearling ADG 3.48 lbs/day

Heifer Bull

- YW 1260 lbs Jan 5th

**LOT
61**

RED GURNEY COMPLETE 46N

2407512 | WCG 46N | JANUARY 21, 2025

RED KJL/CLZB COMPLETE 7000E
RED PIE COMPLETE 221
RED PIE JULY DALLES 0167

RED WHEEL FORT KNOW 47H
RED WHEEL COUNTESS 65L
RED WHEEL COUNTESS 61G

RED LEACHMAN PLEDGEA282Z
RED HXC 507C
RED PIE QUARTERBACK 789
RED PIE JULY DALLES 7295

RED MANN RED BOX 55C
BLACK WHEEL HEATER 89E
RED BAR-E-L ANTHEM 46A
RED WHEEL COUNTESS 78B

BW	205D	E P D	BW	WW	YW	M	CE
83	683		1.8	47	84	25	0

- AOD 3 Yrs
- AWW 732 lbs Oct 1st
- Wean to Yearling ADG 2.84 lbs/day

HEIFER BULL

- YW 1005 lbs Jan 5th





**LOT
63**

RED GURNEY CONFIDENT 18N

2407640 | WCG 18N | JANUARY 14, 2025

BROWN CRSB CONFIDENCE G1410
RED BERWALD CONFIDENT 2044
RED BERWALD JAYLO 0007

CONNEALY CONFIDENCE PLUS
RED BROWN MS MISSION STMT
B542 RED PIE QUARTERBACK 789
RED JEFFRIES MS JOLINE Z243

RED FLYING K DUKE 110G
RED GURNEY ROSETTE 39J
RED LAURON ROSETTE 21G

RED FLYING K NEPTUNE 170B
RED FLYING K CHARITY 40D
RED RSL MOONSHINE MAN 39E
RED LAURON ROSETTE 21E

BW	205D	E P D	BW	WW	YW	M	CE
96	774		0.3	55	96	28	4

- AOD 5 Yrs
- Lifetime Progeny (3) actually BW's Male 83 lbs
- 2 Bulls sold Mehew, Fraser
- AWW 936 lbs Oct 1st - YW 1260 lbs Jan 5th
- Wean to Yearling ADG 3.38 lbs/day

COW BULL



**LOT
64**

RED VALLEY CONFIDENT 37N

2407694 | REG 37N | JANUARY 18, 2025

BROWN CRSB CONFIDENCE G1410
RED BERWALD CONFIDENT 2044
RED BERWALD JAYLO 0007

CONNEALY CONFIDENCE PLUS
RED BROWN MS MISSION STMT
B542 RED PIE QUARTERBACK 789
RED JEFFRIES MS JOLINE Z243

RED SIX MILE GRAND SLAM 130Z
RED LAURON JILL 8G
RED LAURON JILL 107Y

RED VGW GAME PLAN 816
RED SIX MILE REBECCA 216X
RED BAR-E-L RENEGADE 202R
RED LAURON JILL 48U

BW	205D	E P D	BW	WW	YW	M	CE
87	648		-0.6	41	70	28	6

- AOD 7 Yrs
- Lifetime progeny (6) actual BW's Male 71 lbs, Female 68 lbs
- 1 Daughter retained in herd
- AWW 788 lbs Oct 1st - YW 1080 Jan 5th
- Wean to Yearling ADG 3.04 lbs/day

HEIFER BULL



**LOT
65**

RED GURNEY CONFIDENT 50N

2407647 | WCG 37N | JANUARY 22, 2025

BROWN CRSB CONFIDENCE G1410
RED BERWALD CONFIDENT 2044
RED BERWALD JAYLO 0007

CONNEALY CONFIDENCE PLUS
RED BROWN MS MISSION STMT
B542 RED PIE QUARTERBACK 789
RED JEFFRIES MS JOLINE Z243

RED COCKBURN PATRIOT 9048
RED TER-RON LAURYN 26J
RED TER-RON LAURYN 140C

RED T-S PATRIOT 84K
RED COCKBURN CORA 137Y
RED TER-RON PARKER 34A
RED TER-RON LAURYN 190U

BW	205D	E P D	BW	WW	YW	M	CE
94	704		2.1	60	107	24	-1

- AOD 5 Yrs
- Life time progeny (3) actual BW's Male 91 lbs, Female 59 lbs
- 1 Daughter retained in herd
- Bull sold to Mehew Farms
- AWW 824 lbs Oct 1st - YW 1085 lbs Jan 5th
- Wean to Yearling ADG 2.72 lbs/day

COW BULL



SIRE OF LOTS 63, 64 & 65

**LOT
66**

RED GURNEY HONCHO 33N

2407503 | WCG 33N | JANUARY 18, 2025

RED FLYING K BOSS 95C
RED WHEEL HONCHO 11J
RED WHEEL AUBURN 19E

RED NORTH POINT MOONSHINE 28H
RED DWAJO CHERRY 59K
RED DWAJO CHERRY 71G

RED FLYING K MAX 153Y
RED FLYING K MS. DIADEM 100X
LFE BA LEWIS 3008B
RED WHEEL AUBURN 77B

RED RSL MOONSHINE MAN 908F
REDLLB LUCY
RED TC NIGHT TRAIN 26E
RED DWAJO CHERRY 12A

BW	205D	E P D	BW	WW	YW	M	CE
91	710		0.9	42	81	26	4



- AOD 4 Yrs
- Lifetime progeny (2) actual BW's Male 91 lbs
- AWW 816 lbs Oct 1st
- Wean to Yearling ADG 2.80 lbs/day

COW BULL

**LOT
67**

RED GURNEY HONCHO 47N

2407513 | WCG 47N | JANUARY 22, 2025

RED FLYING K BOSS 95C
RED WHEEL HONCHO 11J
RED WHEEL AUBURN 19E

RED W SUNRISE TYPHOON 604H
RED WHEEL JESTRESS 100K
RED WHEEL JESTRESS 4H

RED FLYING K MAX 153Y
RED FLYING K MS. DIADEM 100X
LFE BA LEWIS 3008B
RED WHEEL AUBURN 77B

RED SSS TYCOON 225E
RED HOWE JOANNA 145C
RED SSS AMBUSH 771X
BLACK WHEEL JESTRESS 1Y

BW	205D	E P D	BW	WW	YW	M	CE
80	683		-1.1	45	82	25	8



- AOD 4 Yrs
- Lifetime progeny (2) Actual BW's Male 80 lbs, Female 84 lbs
- AWW 774 lbs Oct 1st
- Wean to Yearling ADG 3.03 lbs/day

HEIFER BULL

**LOT
68**

RED GURNEY SLOWBURN 94N

2407610 | WCG 94N | FEBRUARY 25, 2025

RED LWNBRG SLOWBURN 102H
RED YCR SLOWBURN 51K
RED YCR LYDIAN 1984G

RED WILBAR CRACKERJACK 73F
RED YCR YOAKAM 20121H
RED YCR YOAKAM 1827F

RED U2 DOMINION
RED U2 FAVORITE 275F
RED ALLISON RICKARDS RED 20E
RED YCR LYDIAN 1539C

RED PIE SPECIALIST 430
RED WILBAR SUE 51A
RED U2 MISSION 61W
RED YCR YOAKAM 1551C

BW	205D	E P D	BW	WW	YW	M	CE
96	767		3.9	54	95	25	-6



- AOD 6 Yrs
- Lifetime progeny (4) actual BW's Male 88 lbs, Female 76 lbs
- 1 Bull sold, 2 Daughters sold for breeding
- AWW 810 lbs Oct 1st
- Wean to Yearling ADG 1.98 lbs/day

COW BULL

Open Replacement Heifer Consignments

**LOT
69**

BMB BREWIN ANGUS

SELECT GROUP OF OPEN RED & BLACK ANGUS COMMERCIAL HEIFERS

Offering approximately 60 Open Red Angus Commercial heifers that will be sorted into smaller groups on sale day with a select few Black Angus Heifers. These heifers are all sired by our herd bulls used in our program. Majority of these females are from our purebred angus herd.



**LOT
70**

GURNEY LAND & LIVESTOCK

Offering 15 Open Black Angus Commercial Heifers. All heifers are out of Purebred cows and are sired by our walking herd sires



Open Replacement Heifer Consignments

LOT
71

CHIN COULEE CATTLE COMPANY

Offering Approximately 15 Open Red Angus Commercial Heifers



Select

your next RED ANGUS HERD SIRE to add

**PREDICTABLE
PROFITABLE** *results*

SOLID COLOUR - VERSATILE- CALVING EASE - GROWTH - MATERNAL TRAITS



CANADIAN RED ANGUS PROMOTION SOCIETY OFFERS

the Red Round-Up Female sale in the fall, Regional Junior Programs, Scholarships & promoting Red Angus across Canada

Check us out at www.redangus.ca or Canadian Red Angus Promotion Society facebook page

Larry Penner

Senior Sales Representative

M +1 403 382 7222

E larry.penner@trouwnutrition.com

Trouw Nutrition Canada

1810 - 39 St. North, Lethbridge, AB T1H 5J2

www.trouwnutrition.ca



POWER
— FUELZ —

NEIL WEBSDALE
CEO

403-330-9710 neil@powerfuelz.ca

6003 54 Ave, Taber, AB T1G 1X4



ROCKY MOUNTAIN EQUIPMENT

CASE III
AGRICULTURE

Benji Hill

Utility Sales Consultant
bhill@rockymtn.com

3939 - 1st Avenue South
Lethbridge, AB T1J 4P8

www.rockymtn.com

Main Line
Mobile

403 327 3154
403 635 0496



DAIRY LANE
SYSTEMS

CONTACT: **NIC BARKER**
403-302-7565
NIC.BARKER@DAIRYLANE.CA



SERVING
SOUTHERN ALBERTA
&
SOUTHERN SASKATCHEWAN

www.dairylane.ca

TRIO LIET
FEEDING TECHNOLOGY



Bruce Fletcher

Cell: 403-393-6497
Office: 403-223-1325
Email: bruce@icitaber.com

Box 4690
Taber, AB
T1G-2E1

Country Commodities Limited

116 Broxburn Blvd.
Lethbridge, AB T1J 4P4

Cam Bridgeman

Office: 403-320-2622 Cell: 403-330-9675 Fax: 403-320-2663
E-Mail: cam@countrycommodities.com



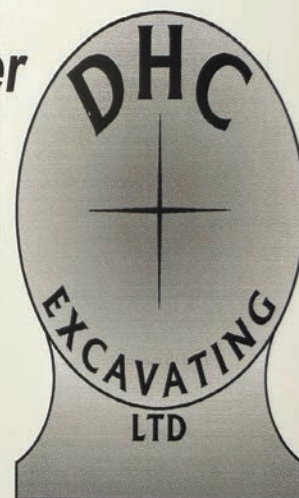
Blake Fletcher
Crop Advisor
blake.fletcher@simplot.com

Cell: 403-330.9351

Dwight Marthaller
825.979.2134

✉ DHCExcavating@outlook.com

19 Lynx Place North
Lethbridge, AB
T1H 6V1



OLS Mineral - "Simply the Best"

Dealer: **Fleming Stock Farms**

Duncan Fleming

Granum, AB

Cell: 403-625-0427

Phone: 403-687-2288

Toll Free: 1-800-565-5288

flemingangus@xplornet.com



NEW HOLLAND

Darren Ostenberg
Sales

Vanee

Farm Centre Inc. EMAIL: darreno@vaneeffarmcentre.ca

BUS: 403-223-4437
CELL: 403-634-1436

Agriculture

5614 - 64 STREET, TABER, AB T1G 1Y8







Notes:

[illegible]

TERMS & CONDITIONS

TERMS: The terms of the sale are cash or cheque payable in Canadian funds. All settlements will be made with the clerks of the sale immediately following the conclusion of the sale. The right of property shall not pass until after the settlement has been made. Each animal will be sold to the highest bidder. All disputes will be settled by the auctioneer & their decision will be final.

DELIVERY: We will deliver your bulls free of charge within 200 km, extra mileage will be at cost. Delivery will be as close to the date you request, but will be at our convenience. If you cannot take your bull when we are in the area, we would appreciate if you made arrangements to pick up your bull.

LIABILITIES: Although every precaution will be taken to protect the safety and comfort of the buyer, neither the sale staff nor the owners assume any responsibility in this manner and disclaim any liability, legal or otherwise in the event of an accident or loss of property.

INSURANCE: Each animal becomes the risk of the purchaser as soon as it's sold therefore we recommend you insure your purchases.

ANNOUNCEMENTS: Any changes from the catalog will be announced from the auction block. Such changes will take precedence over the printed matter in the catalog and therefore buyers are cautioned to pay close attention to any such announcements.

BREEDERS GUARANTEE: All bulls sell under the terms and condition outlined in the CAA bylaws. All bulls will be semen tested and have a breeding soundness evaluation performed by a licensed veterinarian prior to the sale.

WINTERING OF BULLS: We will winter your yearling bulls free of charge until April 15th, after that feed costs of \$3/hd/day will be charged. Any bulls returning to the consignors will be at buyers risk, the consignors will not be responsible for any type of injury while the bulls are in their care. Any bulls returning home must be insured giving both parties peace of mind.

CERTIFICATE OF REGISTRY: A certificate of registry will be mailed to the buyer once settlement is made in full.

RETAINED INTEREST: Seller reserves the right to collect "Owner's Use" semen from any bull in this sale (at the seller's expense and at the buyer's convenience)

BMB Brewin Angus
Box 4366
Taber, AB
T1G 2C8

