

BMB BREWIN & ANGUS &



RED & BLACK ANGUS BULL SALE



FRIDAY MARCH 14, 2025
1:30 PM @ PERLICH BROS AUCTION
LETHBRIDGE, AB

BMB BREWIN ANGUS & GURNEY LAND AND LIVESTOCK

FRIDAY MARCH 14, 2025

SALE START TIME AT 1:30PM

PERLICH BROS. AUCTION MART, LETHBRIDGE, AB

****Viewing of all bulls will be available for viewing at their respective farms prior to the sale or the morning of the sale at Perlich Bros. Auction.****

SALE DAY PHONES:

BRENT BREWIN	403.382.9164
JANESSA BREWIN	403.330.3417
WES GURNEY	403.308.2473
BOB PERLICH, AUCTIONEER	403.382.7800
DARCY MOOREHEAD, RINGMAN	403.635.0308
JOE PERLICH, FIELD REP	403.635.0310

LIVESTOCK INSURANCE:

STOCKMENS INSURANCE: CHERYL BROWN 403.601.3460

Sale Managed By:



MARK HOLOWAYCHUK	403.896.4990
ROGER PETERS	403.828.9815

OFFERING:

- 59 Red & Black Angus Bulls
- Approximately 80 Red & Black Replacement Heifers

BIRTH WEIGHT AND CALVING EASE

University studies in Wyoming and data from Montana & Colorado lend credence to the following conclusions.

1. The birth weight itself influences calving ease by 65%
2. The female has 60-70% influence on birth weight of her calf
3. The bull has 30-40% influence on birth weight of his progeny
4. Pelvic measurement and angle as well as the shape of the calf has 35-40% influence on calving ease
5. Length of gestation greatly affects birth weight. A fetus can gain over one pound per day in the last days of gestation
6. Weather and temperature the last 30 days affect the length of gestation
7. Size and maturity of the cow influences calving ease

Remember, everything is relative. Increased growth, frame and performance will increase BW. A longer-bodied calf will weigh more. If a calf is expected to have the genetics for growth, it will display this prior to birth as well as after. As a rule of thumb, it takes a calf weighing 85 lbs at birth to finish at 1200-1250 lbs. A cow should easily give birth to a calf weighing 8% of her own body weight. Thus a 1200 lb cow should give birth to a 96 lb calf with ease.

Continued selection for light birth weights will ultimately reduce the mature sizes and performance of your cattle.

Internet Bidding Available

D | L | M | S

www.dlms.ca

Direct Livestock Marketing Systems

For more information call:

Mark Shologan 780-699-5082 or Purebred Team 780-991-3025

PERLICH BROS

AUCTION MARKET LTD.

CLIX
AUCTION
CANADIAN LIVE INTERNET EXCHANGE

OBI Livestock Welcome 2025

I would like to Welcome you all to the inaugural sale for BMB Brewin Angus & Gurney Land & Cattle. Both operations were looking for a new sale to have and we got together and partnered up these 2 seedstock producers in southern Alberta. They both have great families and so easy to deal with and that is great to see as a customer of theirs.

BMB Brewin Angus have developed bulls for the area with obtaining top end walking herdbulls over the years along with continuing to use A.I. bulls to develop their herd. The cow herd is large with many females lasting a long time at the ranch. Longevity is key in this operation. In the bull pen this year we have a variety for your pleasure, with a lot of calving ease bulls while still having the power bulls for the cow herd. These bulls are fed to last long for the new owners.

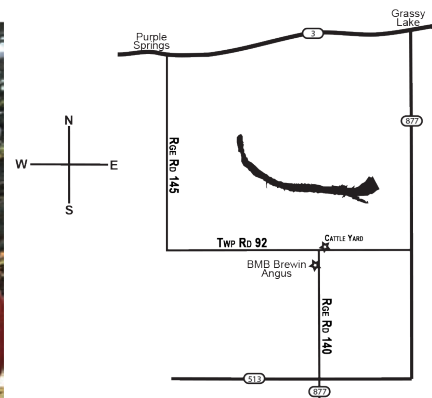
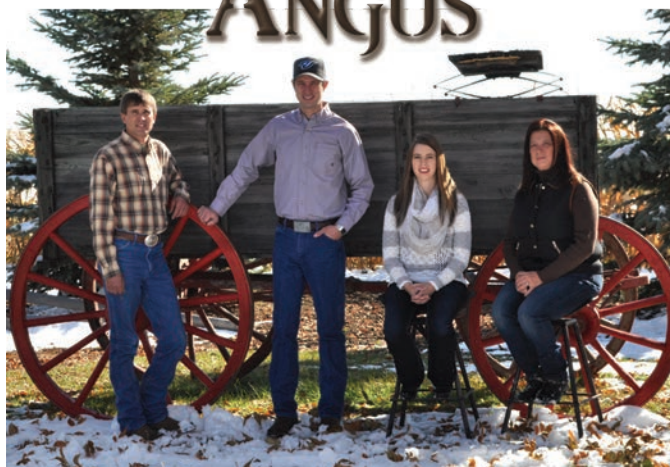
Gurney Land & Livestock will continue to carry on their success from previous bull sales. Bulls are also fed for longevity and no issues in the long run. They go out and work hard for their new owners. Large sire groups enable you to see what that A.I. bull or walking bull did for them. They also have started a Red Angus program to service their customers.

Buy with confidence from either of these programs as these bulls go out to work with hardly any issues. I am very familiar with these bulls, so please do not hesitate to call me, the consignors or the sale staff on the offering. See you at Lethbridge.

Mark Holowaychuk
OBI



BMB BREWIN ANGUS



We wish to extend a warm welcome to our 1st Annual Bull Sale, “BMB Brewin Angus & Gurney Land & Livestock” at Perlich Bros Auction. A few changes have happened in the past year culminating with us joining up with Gurney Land & Livestock to present this years offering. We are looking forward to this partnership in the years to come. We welcome you to come and visit the farm anytime prior to sale day to evaluate the bulls on offer and the dams that produced these bulls. As I write these notes, we are getting into the full swing of calving. Pictures and videos are done, (albeit the videos are early but have to fit them in when we can). It is most definitely exciting to see what last years breeding decisions are producing this year. 2024 was looking to be a drought year for us, but the skies opened up and the rain came. We no longer had to worry about our water restrictions. This year we will also have a very strong group of commercial replacement heifers on offer. (Majority from our purebred herd) Again we would like to invite and encourage past & future buyers to come to the farm prior to sale day to evaluate the bulls & heifers on offer. With much gratitude & appreciation we would like to thank our past customers, Perlich Bros. Auction & fellow producers for their continued support over the years.

We always look forward to seeing you on sale day.

We would also like to take the time to thank Easy Ray Angus(George Hofer) for allowing us to be part of their sale for the last 16 years. We enjoyed working with George and we wish them luck on their new sale platform - Farmgate.

Brent, Myrna, Devin & Janessa



I have had the pleasure of working with the Brewin family for the last 5 years and have enjoyed watching the compassion, care and progression of their operation. BMB Brewin Angus utilizes a complete herd health program emphasizing the health and performance of their livestock. The breeding herd receives yearly preventative 8-way clostridial, 5-way viral and scour pathogen vaccination concentrating on the health of the cow-calf herd. At birth, calves receive an intranasal pneumonia immunization, vitamins, and preventative coccidiosis treatment. At spring turn out and weaning, calves are vaccinated with a 5-way viral with Mannheimia Haemolytica along with a 7-way clostridial with Histophilus Somni. A mineral package is available free choice as well as built into a TMR over the winter, helping to keep the herd in peak performance. Replacement heifers are pre-breeding palpated to ensure they check all the boxes before entering a new herd. Buyers can be confident purchasing a new herd bull or package of replacement heifers from the knowledgeable and attentive breeders at BMB Brewin Angus.

Cory Davis, DVM
Cattle Health Management, Taber

Reference Sires



RED WRIGHTS COMBINATION 34G

2125472 | WRA 34G | MARCH 18, 2019

RED SVR KNIGHT 236T
RED SSS SOLDIER 365W
 RED SSS BELLE 324S

RED SVR KNIGHT 73P
 RED SOUTH VIEW MISS MAXI 45H
 RED CROWFOOT OLE'S OSCAR 2042M
 RED SSS BELLE 612P

RED LAZY MC LOOKOUT 153X
RED LAZY MC FIREFLY 36Z
 RED LAZY MC MISS FIREFLY 31S

LAZY MC LOOKOUT 37U
 RED LAZY MC GOLD DESIGN 84U
 RED LAZY MC SMASH 41N
 RED LAZY MC MISS FIREFLY 61L

BW	WW	YW	E P D	BW	WW	YW	M	CE
79	-	-		0.2	44	78	25	4



RED W SUNRISE BANK NOTE 284G

2102095 | TMP 284G | FEBRUARY 8, 2019

BROOKING BANK NOTE 4040
BLACK WHEEL BANK NOTE 16E
 RED WHEEL ROSE 36S

CONNELLY EARNAN 076E
 E A ROSE 918
 RED BAR-E-L PARAMOUNT 13P
 RED WHEEL ROSE 3L

RED BROWN CREEK SMASH 6W
RED BROWN CREEK ELLIE 882U
 RED GET-A-LONG ELLIE 882

RED LAZY MC SMASH 41N
 RED QAS SUNFLOWER 169F 33L 55N
 RED GOLD-BAR MERCEDES K 116M
 RED GET-A-LONG ELLIE 25S

BW	WW	YW	E P D	BW	WW	YW	M	CE
84	803	1288		5.9	66	98	29	-10



RED LWNBRG SLOWBURN 224K

2281672 | TED 224K | FEBRUARY 26, 2022

RED U2 DOMINION
RED LWNBRG SLOWBURN 102H
 RED U2 FAVORITE 275F

RED HOWE HESSTON 212C
 RED U2 HIDEE HO 459D
 RED U2 RENOWN 193C
 RED KBJ FAVORITE 931B

RED LWNBRG FORCE 14E
RED LWNBRG FORCE 62G
 RED LWNBRG AUTOMATIC 57D

RED ANDRAS FUSION R236
 RED LWNBRG RONA 110C
 RED BRYLOR AUTOMATIC 95B
 RED TED PATRIOT 113Y

BW	WW	YW	E P D	BW	WW	YW	M	CE
70	776	1251		-2.3	49	81	25	12



RED BIEBER CL ENERGIZE F121

2195630 | IMP 121F | JANUARY 12, 2018

RED ANDRAS FUSION R236
RED BIEBER CL ATOMIC C218
 RED BIEBER DATELINE 308Y

ANDRAS IN FOCUS B127
 RED ANDRAS BELE B167
 RED HUST CHIEF SEQUOYA R336
 RED BASIN ROSE 7127

RED BIEBER HARD DRIVE Y120
RED BIEBER CL ADELLE 575D
 RED BIEBER ADELLE 297Y

RED LACY GOLD BAR 8123
 RED BIEBER LAURA 158W
 RED HUST CHIEF SEQUOYA R336
 RED BIEBER ADELLE 7226

BW	WW	YW	E P D	BW	WW	YW	M	CE
60	658	1167		-2.1	43	82	29	9



**MATERNAL
SIBLING**

**LOT
1**

RED BLJ MAXIMO 5M

2382415 | BLJ 5M | FEBRUARY 15, 2024

RED SSS SOLDIER 365W
RED WRIGHTS COMBINATION 34G
 RED LAZY MC FIREFLY 36Z

RED SVR KNIGHT 236T
 RED SSS BELLE 342S
 RED LAZY MC LOOKOUT 153X
 RED LAZY MC MISS FIREFLY 31S

RED BROWN JYJ REDEMPTION Y1334
RED BLJ MS DIVINEND 5J
 RED BLJ MS DIVINEND 95E

RED BECKTON NEBULA P P707
 RED JYJ MS JOLENE W16
 RED BLJ MACINTOSH 44C
 RED BLJ MS DIVINEND 31A

The Ms Divinend Cow 5J has produced a stand out bull for her second calf. Her first calf was one we entertained keeping for use in our own herd but decided in the end to sell him to Lionel & Tammy Stuber. Divinend has proven calving ease in her first two progeny. Maximo is a heifer bull with added muscle shape, smooth look and performance. Paternal Siblings Lot 20, 26 & 32

BW	WW	E P D	BW	WW	YW	M	CE
80	683		-0.8	50	91	23	5

**LOT
2**

RED BMB MASON 12M

2384067 | BMB 12M | FEBRUARY 7, 2024

BLACK WHEEL BANK NOTE 16E
RED W SUNRISE BANK NOTE 284G
 RED BROWN CREEK ELLIE 882U 49A

BROOKING BANK NOTE 4040
 RED WHEEL ROSE 36S
 RED BROWN CREEK SMASH 6W
 RED GET-A-LONG ELLIE 882U

RED MEM RAMBLER 220T
RED BMB ROSE 112W
 RED BMB ROSE 45T

RED VGW RAMBLER 1000
 RED MEM COPPER LADY 7R
 RED CHOPPER K BRASS TRAVELER
 RED BRYLOR RED ROSE 504R



DAM

BW	WW	E P D	BW	WW	YW	M	CE
81	630		1.3	46	73	24	-1

Cow Bull with a quiet disposition. Smooth, solid bull from his shoulders back combined with a nice shaped skull. Sired by a big time power bull that adds mass and an exceptional foot and angularity to all his progeny with deep red tones. Paternal Siblings Lot 4 & 5

Smooth made bull from front to back. Solid in his makeup. Quiet & Halter broke. Carries himself proudly with great dimension.



LOT 3

RED BMB MALCOLM 14M

2384521 | BMB 14M | FEBRUARY 11, 2024

LOT 4

RED BMB MATSON 20M

2395320 | BMB 20M | MARCH 4, 2024

RED U2 REVERENCE 198C
RED TRIPLE L HACKSAW 1H
 RED WRIGHTS TRIPLE L PRIDE 69C

RED U2 RECKONING 149A
 RED U2 LAKOTA 427Y
 RED WRIGHTS 832S IRON HIDE 4Z
 RED LON OF TWO M 13W

RED TRIPLE L JAGGER 18C
RED ROCK POINT ROSALINE 14F
 RED J BAR DEE ROSALINE

RED SIX MILE & CO JAGGER 780A
 RED MOON QUEEN 10U
 RED TRIPLE L THROTTLE 112W
 RED ROSSO MS ACE 9R

BLACK WHEEL BANK NOTE 16E
RED W SUNRISE BANK NOTE 284G
 RED BROWN CREEK ELLIE 882U 49A

BROOKING BANK NOTE 4040
 RED WHEEL ROSE 36S
 RED BROWN CREEK SMASH 6W
 RED GET-A-LONG ELLIE 882U

RED KENRAY STAUNCH 61D
RED KENRAY KANNA 20H
 RED KENRAY KANNA 160F

RED SSS STAUNCH 64Y
 RED KENRAY ROSA 3A
 RED DKF TITANIUM 116D
 RED KENRAY KANNA 178C

BW	WW	E P D	BW	WW	YW	M	CE
97	639	D	3.1	54	83	27	-3

BW	WW	E P D	BW	WW	YW	M	CE
88	779	D	2.2	62	93	30	-2



What can we say, here is a wide top, massive rib shape and a square hip all on a solid foot. His dam was purchased at Canadian Red Roundup in 2021 from Kenray Ranch. We are super happy with the progeny she has produced, keeping her first bull calf for our own use. Paternal Siblings Lot 2 & 5



MATERNAL SIBLING



DAM



LOT 5

RED BMB MAXFIELD 21M

2397235 | BMB 21M | FEBRUARY 29, 2024

BLACK WHEEL BANK NOTE 16E
RED W SUNRISE BANK NOTE 284G
 RED BROWN CREEK ELLIE 882U 49A

RED LAZY MC TWISTER 154A
RED LINES ROBERTA 21E
 RED LINES ROBERTA 16X

BROOKING BANK NOTE 4040
 RED WHEEL ROSE 36S
 RED BROWN CREEK SMASH 6W
 RED GET-A-LONG ELLIE 882U

RED LAZY MC FORUM 223Y
 RED VANCISE FIREFLY 133Y
 RED MOOSE CREEK RALLY 36T
 RED LINES ROBERTA 29R

BW	WW	E P D	BW	WW	YW	M	CE
87	764		3.1	54	83	27	-3

Another Sunrise Bank Note son with extra capacity & muscle expression to be your next herdsire. He is long, wide topped, deep bodied all in a masculine pkg. Paternal Siblings Lot 2 & 4

LOT 6

RED BLJ MARCO 30M

2382389 | BLJ 30M | FEBRUARY 15, 2024

RED YCR BREWSTER 1446B
RED TR PILSNER 230E
 RED TR LAKIMA 1154Y

RED SIX MILE BETTER DEAL 34Z
RED EKW DYNAMINT 30E
 RED EKW DYNAMINT 14B

RED COCKBURN X-RATED 511X
 RED YARROW CREEK MINOLA 6S
 RED TR ESCALADE 318T
 RED TOP LAKIMA 706

RED BENCHMARK BETTER BEEF
 RED SIX MILE LAKOTO 16W
 RED BRYLOR ARSON 84Z
 RED EKW DYNAMINT 740T

BW	WW	E P D	BW	WW	YW	M	CE
86	738		2.6	42	67	23	-2

Moderate framed smooth made with great length depth and natural muscle. Check out his video. Janessa purchased Dynamint 30E from Red Roundup. She produced a heifer that is a full sibling to Marco that sold to Rancho 5K in Mexico, another heifer kept that is being used a 4-H project by her cousin



Super easy bull to look at. Solid in his makeup front to back with remarkable length of spine. Very smooth through his shoulders. Great disposition like his dam. Janessa purchased his dam at the Northern Select Sale from DWAJO Angus who goes back to their Superior 4-H cow who was designated as an elite dam.



LOT 7

RED BLJ MOE 39M

2382415 | BLJ 5M | FEBRUARY 15, 2024

RED BIEBER CL ENERGIZE F121
RED BIEBER JUMPSTART J137
 RED BIEBER GALLEE 390G

RED BIEBER CL ATOMIC C218
 REB BIEBER CL ADELLE 575D
 RED GMRA TRINITY 5222
 RED BIEBER GALLEE 550D

RED ANCHOR 1 ARMAGEDDON 63X
RED DWAJO SUPERIOR 39Z
 RED DWAJO SUPERIOR 59N

RED TOWAW ARMAGEDDON 171S
 RED ANCHOR 1 BEULA 65U
 RED BLUE SPRUCE ZOOK 50H
 RED DWAJO SUPERIOR 4H

BW	WW	E P D	BW	WW	YW	M	CE
90	681		2.1	57	103	26	2

LOT 8

BLJ MINER 56M

2400552 | BLJ 56M | JANUARY 11, 2024

SITZ STELLAR 726D
SITZ MAJOR 707F
 SITZ LADY 383D

MOHNER SUBSTANTIAL 272
 SITZ PRIDE 200B
 SITZ BULLSEYE 10594
 SITZ LADY 319Y

PM TRAPPER 70'20
DWAJO PRIDE 56K
 DWAJO PRIDE 135F

PAINTROCK TRAPPER
 PM TIBBIE 140'15
 DWAJO REALLY WINDY 60C
 DWAJO PRIDE 23S

BW	WW	E P D	BW	WW	YW	M	CE
93	674		0.9	59	101	19	4



Moderate framed cow bull. Built like a heifer bull but his birth weight says otherwise. Smooth from front to back with a nice small skull. Very strong genetics in his pedigree.





**LOT
9**

RED BMB MCNEIL 71M

2384140 | BMB 71M | FEBRUARY 11, 2024

RED W SUNRISE BIG ROCK 365G
RED W SUNRISE BIG ROCK 890K
 RED BROWN CRK MOLLY 1U 27X

RED SSS TYCOON 225E
 RED WHEEL BRIDGET 2D
 RED BRYLOR MASTER PLAN 17M
 RED BROWN CREEK MOLLY 14R 1U

RED NCJ LAZY MC VENOM 34Z
RED BMB SUSIE Q 71D
 RED BMB SUSIE Q 344Z

RED LAZY MC COWBOY CUT 26U
 RED HXC JOLENE 301N
 RED BRYLOR NEW TREND 22D
 RED MEADOW CK SUSIE 57N

McNeil is a phenotypical standout with performance, power and presence. This Big Rock son is stunning from all angles with an attractive front end. Susie Q 71D has provided us with 3 outstanding bulls for the bull pen over the last 3 years.

BW	WW	E P D	BW	WW	YW	M	CE
91	774		2.2	44	80	19	-1

**LOT
10**

RED BMB MAKAI 092M

2384110 | BMB 092M | FEBRUARY 5, 2024

RED U2 REROSPECT 29E
RED MRLA RESPECT 42G
 MRLA MISS 4408B

RED U2 REVERENCE 198C
 RED U2 ANEXA 226C
 S A V HARVESTOR 0338
 RED MRLA MISS 803R

RED XO CROWFOOT SHINE 235Z
RED HOWE MS HIGH MARK 92C
 RED HOWE MS HIGH MARK 98Y

RED CROWFOOT MOONSHINE 8081U
 RED XO CROWFOOT REV ROSE 936W
 RED HOWE BOLD EDITION 80T
 RED HOWE MS HIGH MARK 244U



BW	WW	E P D	BW	WW	YW	M	CE
98	614		4.2	48	79	24	-1

Extra bone with tremendous muscle on this fella. Thick deep dark red meat wagon, sure to add extra pounds to your calves. Stout and attractive. We have 2 maternal sisters kept in herd.

LOT 11

RED BMB MARCOS 104M

2382949 | BMB 104M | JANUARY 31, 2024

RED PELTON WIDELOAD 78B
RED RAML PAYLOAD 9500
 RED RAML CHEROKEE MAIDEN 500

RED SLGN WIDELOAD 920W
 PELTON MISS JAYLA 0508S
 RED HXC CONQUEST 4405P
 RED WDZ SRV FASHION 1135

RED BADLANDS NET WORTH 23U
RED S- BEAUTY ROXIE 104B
 RED S- ROXIE 4P

PFFR SHAQ 607
 RED BADLANDS MEDIRA 406
 RED SVR BOOMERANG 47J
 RED CUTARM ROXIE 891E

BW	WW	E P D	BW	WW	YW	M	CE
84	676		2.6	44	71	24	-1

Powerhouse, phenotypic standout just like his sire. Great body design being stout feature and massive yet with a smooth attractive look. Really love the Payload offspring. Cow Bull.



LOT 12

BMB MONTE 107M

2381910 | BMB 107M | JANUARY 18, 2024

HBH HI DEF 168G
TR DELIBERATE 6J
 TR DIAMOND MIST 9013G

YOUNG DALE HI DEF 52E
 HBH TIBBIE 66E
 DWAJO BANK VAULT 110D
 TR DIAMOND MIST 7002E

SHILOH GOLIATH 3G
BMB ROXIE 107K
 RED BMB ROXIE 621H

SOUTH SHADOW 6Y TOMBOY 130B
 TANNAS PATTIE QUEEN 54E
 RED MAC NEXUS 105F
 RED S- BEAUTY ROXIE 104B



BW	WW	E P D	BW	WW	YW	M	CE
87	719		3.9	63	113	22	-3

Lots of style and natural thickness on a good foot. Smooth fronted with great skull structure coming out of 1st calver. His sire was purchased from Thistle Ridge Ranch. Very happy with his offspring with 4 females kept in herd and two 2yr Old bulls for sale on farm. You don't want to miss this hunk on sale day.





LOT 13

RED BMB MELDRICK 124M

2384922 | BLJ 124M | FEBRUARY 4, 2024

RED BIEBER CL ATOMIC C218
RED BIEBER CL ENERGIZE F121
 RED BIEBER CL ADELLE 575D

RED ANDRAS FUSION R236
 RED BIEBER DATELINE 308Y
 RED BIEBER HARD DRIVE Y120
 RED BIEBER ADELLE 297Y

RED RSL FLOYD 96G
RED BMB MARY ABEL 124K
 RED BMB MARY ABEL 631H

RED U2 FOREIGNER 478E
 RED RSL BITTER SWEET 235D
 RED BMB CRUSH 103D
 RED BMB MARY ABEL 698B

BW	WW	E P D	BW	WW	YW	M	CE
70	669		-0.7	45	84	27	6

Calving ease dream bull. Long, lean and smooth in his makeup. Make sure to check out this dudes video. Paternal Sibling Lot 16



LOT 14

RED BMB MAVERICK 132M

2384929 | BMB 132M | FEBRUARY 27, 2024

RED TRIPLE L HACKSAW 1H
RED PIRO HACKSAW 2174K
 RED YCR PRINCESS 2050H

RED U2 REVERENCE 198C
 RED WRIGHTS TRIPLE L PRIDE 69C
 RED WHEEL UNANIMOUS 92E
 RED YCR PRINCESS 15105C

RED DWAJO GLADIATOR 32L
RED BMB MS HIGH MARK 132K
 RED BMB MS HIGH MARK 92C

RED BLUE SPRUCE ZOOK 50H
 RED DWAJO SUPERIOR 4H
 RED XO CROWFOOT SHINE 235Z
 RED HOWE MS HIGH MARK 98Y

BW	WW	E P D	BW	WW	YW	M	CE
74	734		0.6	44	74	25	-2

Quiet disposition and easy going. Treat your heifers to this calving ease dream bull. Born at 74 lbs and weaned off at 734 lbs off a first calf heifer.



LOT 15

RED BMB MARTY 137M

2384931 | BMB 137M | FEBRUARY 17, 2024

RED FLYING K WYOMING 105C
RED RSL WYOMING 407H
 RED J BAR DEE RUBA 20D

RED TONGUE RIVER JESSE AT385
 RED FLYING K AMANDA 2A
 RED RSL TROY 781A
 RED PASQUIA KURUBA 10Z

RED LAZY MC FORUM 223Y
RED BMB MISS ANNIE 137K
 RED BMB MISS ANNIE 277E

RED RMJ REDMAN 1T
 RED LAZY MC BESS 12S
 RED LAZY MC TRADITION 111C
 RED HOWE MISS ANNIE 115A

BW	WW	E P D	BW	WW	YW	M	CE
87	691		1	33	60	22	6.5

Extreme style like his sire. Smooth made with natural muscle expression. Wide topped, deep bodied with extreme length all wrapped up in a great haircoat.





**LOT
16**

RED BMB MATEO 152M

2384937 | BMB 152M | FEBRUARY 7, 2024

RED BIEBER CL ATOMIC C218
RED BIEBER CL ENERGIZE F121
 RED BIEBER CL ADELLE 575D

RED ANDRAS FUSION R236
 RED BIEBER DATELINE 308Y
 RED BIEBER HARD DRIVE Y120
 RED BIEBER ADELLE 297Y

RED VGW NEXT STEP 554
RED BMB EMU MAR 152K
 RED BMB EMU MAR 841C

RED VGW NAVIGATOR 010
 RED VGW R667-STAR 0815
 RED BMB NEMO 485A
 RED BMB EMU MAR 517A

Big time cow bull. Chip off the old block. Thick, deep bodied with great muscle expression and clean fronted. Great angus character and style in a complete package coming out of a first time calver and boy did this heifer knock it out of the park. Paternal Sibling Lot 13

BW	WW	E P D	BW	WW	YW	M	CE
93	683		2.5	53	98	29	-4



**LOT
17**

RED BMB MONTANA 202M

2397218 | BMB 202M | MARCH 4, 2024

RED JEWEL TRADING RIGHT 108D
RED REDRICH GIRONOMO 178G
 RED REDRICH FIREFLY 178E

RED 5L TRADIN RIGHT 9010-45A
 RED JEWEL CHEROKEE 23B
 RED COCKBURN ALCATRAZ 394A
 RED REDRICH KD FIREFLY 158B

RED WRAZ PHANTOM 12B
RED DOUBLE C DAISY 202D
 DOUBLE C DAISY 496B

RED BRYLOR JKC GHOST RIDER108Y
 RED DOUBLE C ROXIE 293X
 RED WRAZ HOWIE 80Z
 BLACK DOUBLE C DAISY 144Z

BW	WW	E P D	BW	WW	YW	M	CE
78	644		-0.3	35	62	23	9

Heifer bull alert. Extreme calving ease in the top 6% of breed avg, with above average performance. Deep red, great hair, Impressive muscle shape and tons of eye appeal.



LOT 18

BLJ MIGUEL 205M

2382418 | BLJ 205M | MARCH 3, 2024

LORENZ ENDURANCE 10F
C.D. PERSEVERANCE 463J
 C.D. LUCY 413E

EASTONDALE ENDURANCE 82'15
 LORENZ FAIRLASS 36D
 LORENZ UNIFIED 17C
 C.D. LUCY 409C

KESSLERS COMMODORE 6516
FLEMING 205 JENA DAISY
 FLEMING 810 JENA DAISY

CONNEALY COMRADE 1385
 KESSLERS RAINBOW 0595
 R B TOUR OF DUTY 177
 FLEMING 101 JENA DAISY

Here is a bull who is complete in his design from a nice head, extension, top and middle, hip and hair to his presence and look. A calf that is the total package and the pedigree to leave sought after females. His dam was purchased at the Chinook Sale from Fleming Stock Farms by Janessa and he was the magic coupon inside.

BW	WW	E P D	BW	WW	YW	M	CE
90	775		2.7	64	113	29	2



LOT 19

RED BMB MCGEE 219M

2382952 | BMB 219M | JANUARY 26, 2024

RED TER-RON PARKER 34A
RED LAZY MC HOLLYWOOD 127C
 RED LAZY MC FIREFLY 36Z

TER-RON PARK PLACE 18Y
 RED TER-RON DIAMOND MIST 164Y
 RED LAZY MC LOOKOUT 153X
 RED LAZY MC MISS FIREFLY 31S

RED LONE STONE REVOLVER 138Z
RED BMB SUSIE Q 219E
 RED BMB SUSIE Q 344Z

RED CLAY COLT 21X
 RED LONE STONE JENNA 95U
 RED BRYLOR NEW TREND 22D
 RED MEADOW CK SUSIE 57N

BW	WW	E P D	BW	WW	YW	M	CE
90	618		2.1	41	78	21	1

Powerful cow bull with added length. Add payweight to your steers.

**LOT
20**

RED BMB MAXIMUS 224M

2384517 | BMB 224M | FEBRUARY 15, 2024

RED SSS SOLDIER 365W
RED WRIGHTS COMBINATION 34G
RED LAZY MC FIREFLY 36Z

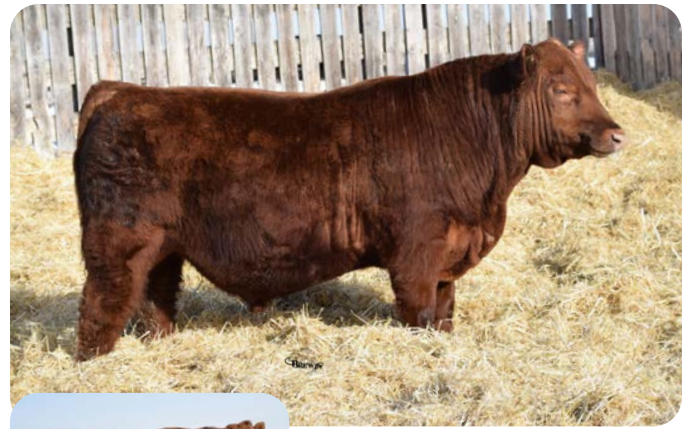
RED SVR KNIGHT 236T
RED SSS BELLE 342S
RED LAZY MC LOOKOUT 153X
RED LAZY MC MISS FIREFLY 31S

RED BMB EDGE 625B
RED BMB CATERINA 224E
RED BMB CATERINA 862C

RED CROWFOOT OLE'S OSCAR 2042M
RED BMB SCARLET FIREFLY 69U
RED NCJ YOU'RE CANADIAN 2A
RED BMB CATERINA 211X

BW	WW	E P D	BW	WW	YW	M	CE
82	676		1.8	41	76	25	-4

Long spined, wide topped, nice smooth shoulders. Defined muscling with pure power and grace all wrapped up in a great hair coat. Paternal Siblings Lot 1, 26 & 32



**LOT
21**

RED BMB MYLES 226M

2400577 | BMB 226M | FEBRUARY 21, 2024

RED SSS TYCOON 225E
RED W SUNRISE TYCOON 103J
RED LCF LOLLIPOP 38D

RED LSF SRR TYSON 3125A
RED SSS VALENTINE 335Z
RED MRLA 200Z
RED RRAR LOLLIPOP 14W

RED BMB KOBO 502A
RED BMB MELISSA 226F
RED BMB MELISSA 240X

RED LAZY MC CC DETOUR 2W
RED CINDER BIEBIRD 18X
RED BMB FREEDOM 71U
RED BMB MELISSA 28T

BW	WW	E P D	BW	WW	YW	M	CE
71	593		0.7	47	82	25	4.5

This calving ease heifer bull will grab your attention at every angle, sharp fronted with loads of muscle. A real complete heifer bull that carries himself proudly.



**LOT
22**

RED BMB MARIO 302M

2384519 | BMB 302M | FEBRUARY 17, 2024

RED DWAJO MACK 4F
RED LAURON HEARTBREAKER 53H
RED LAURON LASSIE 144W

RED TOPHAM PETERBILT 415B
DWAJO LADY 67Y
RED LAZY R C MONTE CARLO 375N
RED LAURON LASSIE 17N

RED TER-RON MAMBO 28K
RED BMB MARIAS 302E
RED TED TOP MARIAS 165R

RED YY RED KNIGHT 640F
RED ALDER ABG STAR DUST 8G
RED TED GLACIER 65L
RED TED FED'S BO 46J

BW	WW	E P D	BW	WW	YW	M	CE
93	719		1.5	43	74	21	-1

This dark cherry red soft made stud is full of eye appeal, depth, length and balance.





LOT 23

RED BMB MILES 408M

2396339 | BMB 408M | FEBRUARY 15, 2024

RED LWNBRG SLOWBURN 102H
RED LWNBRG SLOWBURN 224K
 RED LWNBRG FORCE 62G

RED U2 DOMINION
 RED U2 FAVORITE 275F
 RED LWNBRG FORCE 14E
 RED LWNBRG AUTOMATIC 57D

RED COCKBURN ASSASSIN 624D
RED BMB FLICKA 408G
 RED BMB FLICKA 297Y

RED PIE SPECIALIST 430
 RED COCKBURN CORA 254Z
 RED SHODEREE FORTE 131U
 RED BMB FLICKA 18S

BW	WW	E P D	BW	WW	YW	M	CE
73	577		-1.6	42	72	25	9

A long bodied smooth bull to use in the heifer pen. Some proven genetics with Slowburn, Dominion, Assassin and Pie Specialist. Paternal Sibling Lot 28



LOT 24

RED BMB MORRIS 432M

2395311 | BMB 432M | FEBRUARY 16, 2024

RED DKF RACER 8E
RED BMB KRACKER JACKER 094K
 RED TR ANNIE 8094F

RED DKF RAZOR 55C
 RED DKFE MISS ACE 84C
 RED HOWE CLEARWATER 21C
 RED TR ANNIE 5177C

RED HOWE TEMPT 87B
RED BMB TESLA 432G
 RED BMB TESLA 359Z

TOWAW TEMPT 15X
 RED HOWE MS CRESTON 80S
 RED RMJ REDMAN 1T
 RED BMB TESLA 170X

BW	WW	E P D	BW	WW	YW	M	CE
82	626		-0.9	35	60	25	8

Here's a low birth weight bull to be used on mature heifers or 2nd calvers. A super deep bull. Paternal Sibling Lot 31



LOT 25

RED BMB MOHAN 441M

2384530 | BMB 441M | FEBRUARY 9, 2024

RED LAZY MC TROOPER 21Y
RED NCJ LAZY MC RAMBLIN MAN 305B
 RED HXC JOLENE 301N

RED SSS SOLDIER 365W
 LAZY MC EXPRESS 60W
 RED BECKTON JULIAN GG B571
 RED HXC JAYLO LB136

RED DOUBLE C ELIXER 382E
RED BMB FANNY MAE 441G
 RED BMB FANNY MAE 409Z

RED DOUBLE C BONANZA 415B
 RED DOUBLE C ROCHELLE 152Z
 RED U2 INDEED 198W
 RED BMB FANNY 173X

BW	WW	E P D	BW	WW	YW	M	CE
99	733		2.9	46	81	27	-5

Here is a big time herd bull prospect. Soft in his makeup extended through his front end with plenty of style and performance wrapped up in a dark cherry red haircoat.

**LOT
26**

RED BMB MONTY 454M

2384531 | BMB 454M | FEBRUARY 20, 2024

RED SSS SOLDIER 365W
RED WRIGHTS COMBINATION 34G
 RED LAZY MC FIREFLY 36Z

RED SVR KNIGHT 236T
 RED SSS BELLE 342S
 RED LAZY MC LOOKOUT 153X
 RED LAZY MC MISS FIREFLY 31S

RED NCJ LAZY MC VENOM 34Z
RED BMB REBELLO 454G
 RED BMB REBELLO 80U

RED LAZY MC COWBOY CUT 26U
 RED HXC JOLENE 301N
 RED SK MANKOTA 135R
 RED BMB REBELLO 7S

BW	WW	E P D	BW	WW	YW	M	CE
75	634		-0.6	39	70	21	5

Another heifer bull sired by Wrights Combination. Out of a good young hard-working cow having produced a bull sold to Spring Valley Colony and a bred heifer sold to Morgan Rosadiuk in Ladies of the West Sale. Paternal Sibling Lot 1, 20 & 32



**LOT
27**

RED BMB MERCURY 575M

2395321 | BMB 575M | MARCH 7, 2024

RED W SUNRISE BANK NOTE 284G
RED BMB JERSEY 224J
 RED CATERINA 224E

BLACK WHEEL BANK NOTE 16E
 RED BROWN CREEK ELLIE 882U
 RED BMB EDGE 625B
 RED BMB CATERINA 862C

RED U2 RESOLVE 428E
RED W SUNRISE BEAUTY 575H
 RED U2 BEAUTY 354E

RED U2 RENOWN 193C
 RED U2 MS ROBO 361A
 RED U2 REVERENCE 198C
 RED U2 BEAUTY 105X

BW	WW	E P D	BW	WW	YW	M	CE
78	718		0.5	36	64	25	1

Stylish, thick, deep made bull that's full of muscle. Indexed 109 at weaning. BW of 78 lbs weaned off at 718lbs. His dam was purchased from W Sunrise Angus. She is a nice moderate framed, good footed cow with a great udder. Youngest bull in the offering and you would never know it.





LOT 28

RED BMB MAX 581M

2396341 | BMB 581M | FEBRUARY 10, 2024

RED LWNBRG SLOWBURN 102H
RED LWNBRG SLOWBURN 224K
 RED LWNBRG FORCE 62G

RED U2 DOMINION
 RED U2 FAVORITE 275F
 RED LWNBRG FORCE 14E
 RED LWNBRG AUTOMATIC 57D

RED LAZY MC SERGEANT 97Z
RED BMB MISTRESS 581H
 RED BMB MISTRESS 504A

RED SSS SOLDIER 365W
 RED LAZY MC GOLD DESIGN 68U
 RED TR INVASION 18Y
 RED BMB MISTRESS 260Y

BW	WW	E P D	BW	WW	YW	M	CE
76	612		-1.5	42	68	27	7

Another Slowburn sired heifer bull. A calving ease bull that puts it all together. Structural soundness, angus character, length and plenty of shape and muscle. Dam is moderate framed & good footed. We have a daughter retained in herd. Paternal Siblings Lot 23

LOT 29

RED BMB MARLOW 617M

2382969 | BMB 617M | JANUARY 29, 2024

RED DMM PUMP 118T
RED DMM GLESBAR BARDANCE 35X
 RED GLESBAR LEAH 029U

RED PERKS ADVANCE 121R
 DMM MISS ESSENCE 112H
 RED DMM TRACTION 98R
 RED GLESBAR LEAH 96L

RED BRYLOR OTM KODIAK 610D
RED BMB ANNIKA CORRINE 617H
 RED BMB ANNIKA CORRINE 220F

RED BRYLOR RED KODIAK 3A
 RED MCRAE'S REBA 49W
 RED BMB MOONSHINE 774C
 RED BMB ANNIKA CORRINE 651B

BW	WW	E P D	BW	WW	YW	M	CE
82	644		2.6	47	73	25	0

Herd Bull Alert. Here is a smooth deep red package full of red meat that carries well into his hindquarter. Soft haired, widened topped & long sided adds to his eye appeal.



LOT 30

RED BMB MONTGOMERY 656M

2382950 | BMB 656M | FEBRUARY 1, 2024

RED LAZY MC COWBOY CUT 26U
RED NCJ LAZY MC VENOM 34Z
 RED HXC JOLENE 301N

RED LAZY MC STOUT 30S
 RED LAZY MC STAR 185M
 RED BECKTON JULIAN GG B571
 RED HXC JAYLO LB136

RED BMB NORSE 382E
RED BMB DELILA 656B
 RED BMB DELILA 372Z

RED SSS NORSEMAN 412S
 RED BMB SCARLETT 44T
 RED BASIN SENSATION 702E
 RED BMB DELIGHT 98W

BW	WW	E P D	BW	WW	YW	M	CE
71	672		-1	40	69	20	6

A Venom son that has the presence of a real breeding bull with length, muscle, correctness and superb structural balance. Soft made, great disposition. Dam has sons working at Pinhorn Grazing & Jason Statham. A daughter kept in herd.



**LOT
31**

RED BMB MITCHELL 693M

2400576 | BMB 693M | FEBRUARY 21, 2024

RED DKF RACER 8E
RED BMB KRACKER JACKER 094K
 RED TR ANNIE 8094F

RED DKF RAZOR 55C
 RED DKFE MISS ACE 84C
 RED HOWE CLEARWATER 21C
 RED TR ANNIE 5177C

RED U-2 FOREIGNER 413B
RED BMB MISTRESS 693J
 RED BMB MISTRESS 304E

U2 T.K.O. 254Z
 RED U2 ANEXA 8026U
 RED LONE STONE REVOLVER 138Z
 RED BMB MISTRESS 260Y

BW	WW	E P D	BW	WW	YW	M	CE
76	619		0.3	41	68	23	7

A dark red heifer safe option with some added muscle & rib shape. You don't always find heifer bulls that put all the pieces together like this fella. Paternal Sibling Lot 24



**LOT
32**

RED BMB MURRAY 710M

2384889 | BMB 710M | FEBRUARY 17, 2024

RED SSS SOLDIER 365W
RED WRIGHTS COMBINATION 34G
 RED LAZY MC FIREFLY 36Z

RED SVR KNIGHT 236T
 RED SSS BELLE 342S
 RED LAZY MC LOOKOUT 153X
 RED LAZY MC MISS FIREFLY 31S

RED W SUNRISE BANK NOTE 284G
RED BMB SHAWNEE 710J
 RED ROCK POINT SHAWNEE 16F

BLACK WHEEL BANK NOTE 16E
 RED BROWN CREEK ELLIE 882U
 RED TRIPLE L JAGGER 18C
 RED STOREBO SHAWNEE 79B

BW	WW	E P D	BW	WW	YW	M	CE
80	696		1.2	48	82	27	2

Here's an attention grabber heifer bull that has great muscle expression, spring of rib, smooth & clean all the way through. Has a good solid foot under him. Murray has got some power backing him with W Sunrise Bank Note on the bottom side so you know he's going to put out some jam. Paternal Siblings Lot 1, 20 & 26



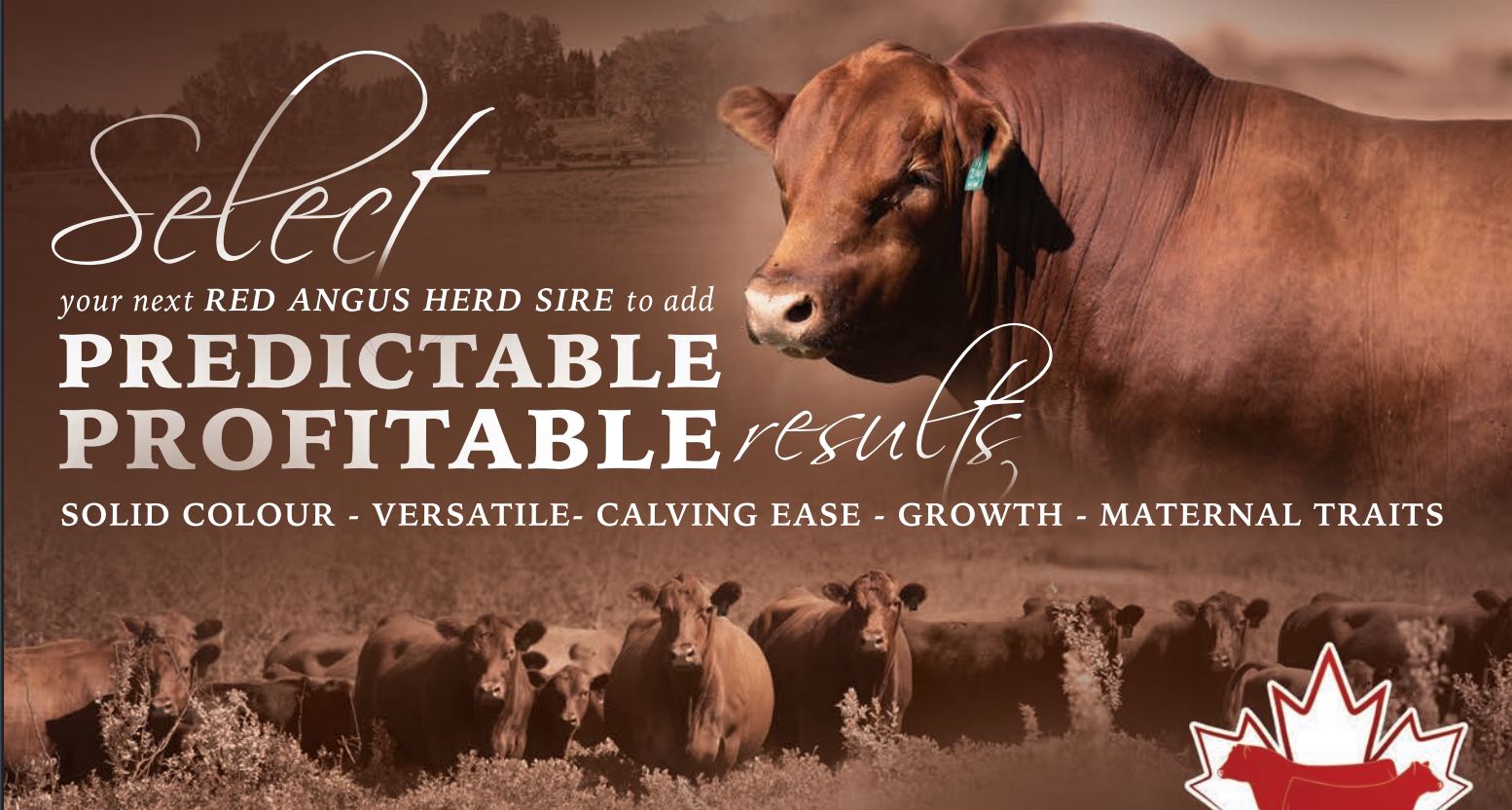


Select

your next RED ANGUS HERD SIRE to add

PREDICTABLE
PROFITABLE results

SOLID COLOUR - VERSATILE- CALVING EASE - GROWTH - MATERNAL TRAITS

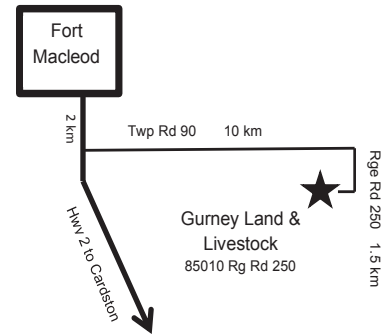


CANADIAN RED ANGUS PROMOTION SOCIETY OFFERS

the Red Round-Up Female sale in the fall, Regional Junior Programs, Scholarships & promoting Red Angus across Canada

Check us out at www.redangus.ca or Canadian Red Angus Promotion Society facebook page





We are very happy to welcome you to another annual bull sale! This is our 13th annual sale as a family, and our 1st annual sale joining up with BMB Brewin Angus. We're excited to work with the Brewin Family and to continue working with the Perlich family. Our vision and goals remain the same. To produce sound, functional cattle that will be an asset to your herd's productivity and success. We focus on maternal, growth, and carcass qualities with a desire to improve foot and leg structure. Docility and calving ease are also a high priority for our family's safety and yours. This year's offering will provide you with bulls sired by some of the most powerful, proven herd sires in North America. Our walking herd sires are sourced from top Angus breeders here in Canada. Quality runs deep in this year's pen of bulls. You are welcome anytime to come to the farm and see the bulls and their dams. If you want another set of eyes to give you information on the bulls, Mark Holowaychuk from OBI can answer all of your questions. We are very thankful to our customers, neighbors, and friends for your trust and confidence in our program. We strive to earn and keep your business by providing the very best bulls possible and customer service to match.

Wes & Carolyn Gurney
403-308-2473
www.gurneyangus.com
Fort Macleod AB.
85010 Range Road 250

Herd Health Management

We strive to provide our herd with the best possible feed ingredients and health protocols to ensure optimal health and growth throughout their lives. At birth, the calves are given Inforce 3 and Vit ADE and weighed within 24 hours of birth. Before we turn out in early June, the calves are given Pyramid FPS with Presponse, Fermicon 7/Somnugen, and Longe Range and DNA samples are taken to parent verify the calves to their parents. During the summer months, the calves only have grass and mother's milk with a mineral/Vitamin tubs to lick. We don't creep feed our calves. We feel this is the best way to evaluate the actual growth and potential genetics of these calves and their dams. This year the bull calves were weaned on October 5th 2024. We give them booster shots of Pyramid FPS and Fermicon, as well as Ivermectin or Cylence, pour on. At this time weaning weights are taken. We feed alfalfa silage to our herd and start the bulls on an alfalfa silage/Timothy ration to begin. We then introduce a pellet ration from Bullseye Feeds into the ration. We slowly increase the pellet ration to 1% of the body weight of the animal and eliminate Timothy from the ration. We feel this ration helps the bulls to grow into their genetic potential, without pushing them too hard and burning them out which would reduce their long-term breeding potential. All bulls are semen tested by the wonderful staff at Fort Macleod Vet Clinic a few weeks before sale day. At this time the bulls are given their first shot of Fusoguard for prevention of foot rot. The booster shot is given right before sale day.

Reference Sires

DWAJO COALITION 79K

2300184 | DJE 79K | FEBRUARY 12, 2022

HF SYNDICATE 213Z
U2 COALITION 206C
U2 ERELITE 109Z

CONNEALY CONSENSUS 7229
HF MISS BLACKCAP 27R
YOUNG DALE XCLUSIVE 25X
U2 ERELITE 1X

DWAJO FINAL DOMINATION 33X
DWAJO JESTRESS 119Z
DWAJO JESTRESS 122X

SIX MILER FINAL ANSWER 701T
DWAJO ZARA 144T
FRL IMAGE MAKER 543R
DWAJO JESTRESS 59M

BW	WW	YW	E P D	BW	WW	YW	M	CE
82	762	1366		1.4	42	84	27	6



GURNEY ENHANCE 3G

2081701 | WCG 3G | JANUARY 2, 2019

SYDGEN EXCEED 3223
SYDGEN ENHANCE
SYDGEN RITA 2618

SYDGEN GOOGOL
SYDGEN FOREVER LADY 1255
SYDGEN LIBERTY GA 8627
FOX RUN RITA 9308

WR JOURNEY-1X74
GURNEY NEW LASSIE 11E
BENCHMARK NEW LASSIE 77'15

B/R FUTURE DIRECTION 4268
2 BAR 5050 NEW DESIGN 7831
G A R BASELINE AB297
BENCHMARK NEW LASSIE 99

BW	WW	YW	E P D	BW	WW	YW	M	CE
84	803	1288		0.9	62	111	33	7



SQUARE B TRUE NORTH 8052

2195537 | IMP 8052K | AUGUST 16, 2018

COLEMAN CHARLO 0256
S A V RAINFALL 6846
S A V BLACKCAP MAY 4136

O C C PAXTON 730P
BOHI ABIGALE 6014
S A V 81080 TRAVELER 004
S A V MAY 2397

CONNEALY CONSENSUS
ELBANNA OF CONANGA 1209
ELBASTA OF CONANGA 9703

KMK ALLIANCE 6595 187
BLINDA OF CONANGA 004
CONNEALY FORWARDS
ELBA OF CONANGA 3761

BW	WW	YW	E P D	BW	WW	YW	M	CE
89	741	1199		-2.2	56	105	35	15



RED WHEEL HONCHO 11J

2241979 | MFW 11J | JANUARY 10, 2021

RED FLYING K MAX 153Y
RED FLYING K BOSS 95C
RED FLYING K MS. DIADEM 100X

RED ML MAX 862U
RED FLYING K LASSIE 37S
RED THAT'LL DO DIADEM 7D
RED MCRAES KERI 9J

LFE BA LEWIS 3008B
RED WHEEL AUBRUN 19E
RED WHEEL AUBURN 77B

JL KELLY 2232
LFE BA JESTRESS 2007W
RED BAR-E-L APPROVAL 4L
RED WHEEL AUBRUN 2K

BW	WW	YW	E P D	BW	WW	YW	M	CE
78	735	-		-1.3	41	77	30	10





**LOT
33**

GURNEY TRUE NORTH 4M

2359393 | WCG 4M | JANUARY 3, 2024

SAV RAINFALL 6846
SQUARE B TRUE NORTH 8052
ELBANNA OF CONANGA

COLEMAN CHARLO 0256
SAV BLACKCAP MAY 4136
CONNEALY CONSENSUS
ELBASTA OF CONANGA 9703

EBON HILL 462 UPWARD 27'15
GURNEY COUNTESS 13E
WILLABAR COUNTESS 22S

EBON HILL UPWARD 462'13
EBON HILL BEAUTY 7'12
WILLABAR AMBUSH 86K
WILLABAR COUNTESS 24N

We were attracted to the True North Sire because of his well-rounded, unbeatable maternal data package, and top 1% calving ease. 4M is following in these footsteps by having an Upward Dam and being in the top 10% for calving ease. Above average calving ease and maternal qualities in this guy.

BW	WW	EPD	BW	WW	YW	M	CE
79	642		-0.7	51	89	29	10



**LOT
34**

GURNEY TRUE NORTH 7M

2359405 | WCG 7M | JANUARY 5, 2024 (TW)

SAV RAINFALL 6846
SQUARE B TRUE NORTH 8052
ELBANNA OF CONANGA

COLEMAN CHARLO 0256
SAV BLACKCAP MAY 4136
CONNEALY CONSENSUS
ELBASTA OF CONANGA 9703

HF HOT LOTTO 183D
GURNEY TILDA 49H
GURNEY TILDA 49E

BSF HOT LOTTO 1401
HF MISS BLACKCAP 27R
GURNEY IRON MOUNTAIN 40Z
GURNEY TILDA 22W

BW	WW	EPD	BW	WW	YW	M	CE
70	561		-0.2	52	98	28	7.5

Another quality sired True North bull. This guy is a twin to Lot 35 (WCG 8M). His dam is a young HF Hot Lotto cow with excellent feet and udder. Very smoothly made with a nice set of balanced EPD's.



**LOT
35**

GURNEY TRUE NORTH 8M

2359406 | WCG 8M | JANUARY 5, 2024 (TW)

SAV RAINFALL 6846
SQUARE B TRUE NORTH 8052
ELBANNA OF CONANGA

COLEMAN CHARLO 0256
SAV BLACKCAP MAY 4136
CONNEALY CONSENSUS
ELBASTA OF CONANGA 9703

HF HOT LOTTO 183D
GURNEY TILDA 49H
GURNEY TILDA 49E

BSF HOT LOTTO 1401
HF MISS BLACKCAP 27R
GURNEY IRON MOUNTAIN 40Z
GURNEY TILDA 22W

Twin to WCG 7M But don't let that red flag him. A great candidate to use in the heifer pen and will also deliver some excellent performance and maternal strength to your next calf crop.

BW	WW	E P D	BW	WW	YW	M	CE
70	655		-0.2	52	98	28	7.8

**LOT
36**

GURNEY RESILIENT 13M

2359413 | WCG 13M | JANUARY 8, 2024

SITZ STELLAR 726D
SITZ RESILIENT 10208
SITZ MISS BURGESS 1856

MOHNEN SUBSTANTIAL 272
SITZ PRIDE 200B
SITZ TOP GAME 561X
SITZ MISS BURGESS 4381

REMINGTON HEADS UP 410T
GURNEY TILDA 72Z
REMINGTON TILDA 8P

SUMMIT ANGUS HEADS UP 17P
REMINGTON BARBARA 103P
BON VIEW NEW DESIGN 1407
WIWA CREEK TILDA 32C

BW	WW	E P D	BW	WW	YW	M	CE
74	657		-0.3	49	84	25	8

Resilient calves are hard to find any faults in them. They have moderate birth weights, great performance, and maternal qualities. 13 M dam is 13 years old and as consistent as they come. She has great feet, udder, and disposition. Expect these traits to be passed onto your next calf crop.





LOT 37

GURNEY ENHANCE 14M

2359414 | WCG 14M | JANUARY 8, 2024

SYDGEN ENHANCE
GURNEY ENHANCE 3G
 GURNEY NEW LASSIE 11E

SYDGEN EXCEED 3223
 SYDGEN RITA 2618
 WR JOURNEY-1X74
 BENCHMARK NEW LASSIE 77'15

EBON HILL UPWARD 462'13
GURNEY BLACKCAP 319D
 EBON HILL BLACKCAP 219'12

SITZ UPWARD 307R
 EBON HILL QUEEN 46'09
 EBON HILL OBJECTIVE 341'10
 EBON BLACKCAP 119'10

BW	WW	EPD	BW	WW	YW	M	CE
73	696		-0.8	69	119	30	13

Sometimes the good ones get away from you. We sold 3 G Enhance to our good friends from Rock Creek Cattle Company a few years ago. Luckily, they let us draw semen on him, and what an impact he has made in our herd. From calving ease, maternal, performance in pounds and on the carcass side plus foot and udder improver. Here's your chance to buy a multi-trait bull to move your herd forward.

Don't discount this bull because he's Dam licked off his earmuffs on a cold January morning resulting in a short right ear. This bull is nothing sort of Impressive! A heifer bull with a 73 lbs birth weight top 6% and top 10% performance. He's sire Safe Deposit has tremendous EPDs across the board, which will greatly improve your bottom line.

LOT 38

GURNEY SAFE DEPOSIT 16M

2359415 | WCG 16M | JANUARY 8, 2024

BASIN DEPOSIT 6249
BASIN SAFE DEPOSIT 9324
 BASIN JOY 2006

BASIN ADVANCE 3134
 BASIN LUCY 4288
 SUMMITCREST COMPLETE 1P55
 BASIN JOY 566T

DEER VALLEY GROWTH FUND
GURNEY LADY LYN 8K
 GURNEY DYNA LADY LYN 2E

BASIN PAYWEIGHT 1682
 DEER VALLEY RITA 36113
 H A IMAGE MAKER 0415
 GURNEY DYNA LADY LYN 30C

BW	WW	EPD	BW	WW	YW	M	CE
73	696		-0.8	69	119	30	13



**LOT
39**

GURNEY TRUE NORTH 20M

2359419 | WCG 20M | JANUARY 10, 2024

SAV RAINFALL 6846
SQUARE B TRUE NORTH 8052
ELBANNA OF CONANGA

COLEMAN CHARLO 0256
SAV BLACKCAP MAY 4136
CONNEALY CONSENSUS
ELBASTA OF CONANGA 9703

BPF VANCE 213
EBON HILL BLACKCAP 319'14
EBON HILL BLACKCAP 219'12

TC VANCE 011
BPF MIXX WIX 837
EBON HILL OBJECTIVE 341'10
EBON HILL BLACKCAP 119'104

BW	WW	E P D	BW	WW	YW	M	CE
90	580		-0.3	53	96	30	9.5

Another one of these quality True North sired sons out of cow line purchased from the maternal-focused herd of Ebon Hill Angus. Herd Bull



**LOT
40**

GURNEY ENHANCE 25M

2359421 | WCG 25M | JANUARY 13, 2024

SYDGEN ENHANCE
GURNEY ENHANCE 3G
GURNEY NEW LASSIE 11E

SYDGEN EXCEED 3223
SYDGEN RITA 2618
WR JOURNEY-1X74
BENCHMARK NEW LASSIE 77'15

CONNEALY CONSENSUS 7229
HF LICORICE 107B
HF LICORICE 154N

CONNEALY CONSENSUS
BLUE LILLY OF CONANGA 16
HF PROGRESS 20K
HF LICORICE 19L

BW	WW	E P D	BW	WW	YW	M	CE
95	685		3.5	64	110	26	-1

A Herd Bull that will add maternal value and performance to your calf crop. His dam was purchased from Hamilton Farms in 2015. Longevity, feet, and udder traits are built into this calf. Enhance 3G on the other side only adds to the value of this bull.



**LOT
41**

GURNEY ENHANCE 28M

2359424 | WCG 28M | JANUARY 13, 2024

SYDGEN ENHANCE
GURNEY ENHANCE 3G
GURNEY NEW LASSIE 11E

SYDGEN EXCEED 3223
SYDGEN RITA 2618
WR JOURNEY-1X74
BENCHMARK NEW LASSIE 77'15

W SUNRISE ELEMENT 134F
GURNEY NEORA 51K
SOUTHERN NEORA 7A

BARTELS ELEMENT 1028 651
HF BLOSSOM 30D
W H S LIMELIGHT 64V
SOUTHERN NEORA 5W

BW	WW	E P D	BW	WW	YW	M	CE
81	690		1	61	104	31	7

Here's a combination of highly maternal traits from multiple maternal sires in his pedigree. Also, curve bending performance EPDs from an 81 lbs birth weight. Heifer's first calf and an amazing job she did. Top-notch heifer bull here folks.





**HEIFER
BULL**



SIRE

This bull will definitely be one you want to get your hands on! He's from my #1 top-producing cow in our herd. The mother to the 3G Enhance bull. Multiple sons working in herds. Her daughters are cherished here on the farm. Calving ease, maternal, and performance. His sire Resilient, is just icing on the cake that will greatly improve every trait in your next calf crop.

**LOT
42**

GURNEY RESILIENT 29M

2359425 | WCG 29M | JANUARY 13, 2024

SITZ STELLAR 726D
SITZ RESILIENT 10208
SITZ MISS BURGESS 1856

MOHNEN SUBSTANTIAL 272
SITZ PRIDE 200B
SITZ TOP GAME 561X
SITZ MISS BURGESS 4381

WR JOURNEY-1X74
GURNEY NEW LASSIE 11E
BENCHMARK NEW LASSIE 77'15

B/R FUTURE DIRECTION 4268
2 BAR 5050 NEW DESIGN 7831
G A R BASELINE AB297
BENCHMARK NEW LASSIE 99

BW	WW	E P D	BW	WW	YW	M	CE
83	704		-0.2	63	108	29	8



**HEIFER
BULL**

**LOT
43**

GURNEY COALITION 34M

2359429 | WCG 34M | JANUARY 14, 2024

U2 COALITION 206C
DWAJO COALITION 79K
DWAJO JESTRESS 119Z

HF SYNDICATE 213Z
U2 ERELITE 109Z
DWAJO FINAL DOMINATION 33X
DWAJO JESTRESS 122X

SITZ STELLAR 726D
GURNEY TILDA 24J
GURNEY TILDA 72Z

MOHNEN SUBSTANTIAL 272
SITZ PRIDE 200B
REMINGTON HEADS UP 410T
REMINGTON TILDA 8P

BW	WW	E P D	BW	WW	YW	M	CE
71	666		-0.5	48	86	25	9

Here's a top-notch Heifer bull out of Dwajo Coalition 79K a walking herd sire here at Home. Smoothed shouldered, length of spine that will provide plenty of calving ease. Out of a Sitz Stellar Dam who will pass along great feet and maternal qualities.

**LOT
44**

GURNEY ENHANCE 35M
2359430 | WCG 35M | JANUARY 14, 2024

SYDGEN ENHANCE
GURNEY ENHANCE 3G
GURNEY NEW LASSIE 11E

SYDGEN EXCEED 3223
SYDGEN RITA 2618
WR JOURNEY-1X74
BENCHMARK NEW LASSIE 77'15

EBON HILL UPWARD 462'13
GURNEY BLACKCAP 320D
EBON HILL BLACKCAP 219'12

SITZ UPWARD 307R
EBON HILL QUEEN 46'09
EBON HILL OBJECTIVE 341'10
EBON HILL BLACKCAP 119'10

BW	WW	EPD	BW	WW	YW	M	CE
84	694		0.8	57	102	30	7



Another great candidate to use in the heifer pen. Moderate birth weight with some good performance numbers on this Enhance bull. Looking to improve your milking in your cows, this guy is in the top 7% for milk EPD

**LOT
45**

GURNEY RESILIENT 39M
2359433 | WCG 39M | JANUARY 18, 2024

SITZ STELLAR 726D
SITZ RESILIENT 10208
SITZ MISS BURGESS 1856

MOHNEN SUBSTANTIAL 272
SITZ PRIDE 200B
SITZ TOP GAME 561X
SITZ MISS BURGESS 4381

LLB ELIMINATOR 316B
GURNEY TILDA 43E
GURNEY TILDA 72Z

PEAK DOT ELIMINATOR 765Z
LLB BARBARA ROSE 208Z
REMINGTON HEADS UP 410T
REMINGTON TILDA 8P

BW	WW	EPD	BW	WW	YW	M	CE
92	691		2.6	64	109	18	-1

Progeny off of this bull should produce some females with very strong maternal traits. Also, will provide lots of performance for beefy steers in the fall.





Here's a well-put-together Coalition-sired bull. Moderate birth weight can be used on heifers. Enhance dam that has passed on good milk and growth EPDs

LOT 46

GURNEY COALITION 40M

2359434 | WCG 40M | JANUARY 1, 2024

U2 COALITION 206C
DWAJO COALITION 79K
 DWAJO JESTRESS 119Z

HF SYNDICATE 213Z
 U2 ERELITE 109Z
 DWAJO FINAL DOMINATION 33X
 DWAJO JESTRESS 122X

GURNEY ENHANCE 3G
GURNEY ERELITE 74J
 GURNEY ERELITE 6F

SYDGEN ENHANCE
 GURNEY NEW LASSIE 11E
 TRIPLE E MATRIX 908
 GURNEY ERELITE 56A

BW	WW	EPD	BW	WW	YW	M	CE
85	707		1.8	52	95	29	5

LOT 47

GURNEY ROCCO 43M

2359435 | WCG 43M | JANUARY 19, 2024

SAV RENOWN 3439
BLAIR'S ROCCO 268F
 BAR-E-L NATURAL LAW 52Y

RITO 707 OF IDEAL 3407
 S A V BLACKCAP MAY 4136
 BAR-E-L NATURAL LAW 52Y
 HF ERICA 339T

KUEBER SHOTGUN WILLIE 54E
KUEBER ERELITE 240G
 LLB ERELITE 240A

KUEBER SHOTGUN WILLIE 22C
 RED BROWNALTA BRIDGET 53Y
 SOO LINE BLACKMAN 8044
 LLB ERELITE 239W

BW	WW	EPD	BW	WW	YW	M	CE
72	577		0	39	75	24	5

This bull came to us in Dam from the Kueber Farms dispersal sale. I would use him on larger heifers as there is some power in his genetic family tree. Goes back to SAV Renown 3439 and a Bar-E-L Erica Cow. Proven genetics that have built strong cow herds.





**LOT
48**

GURNEY ENHANCE 45M

2359881 | WCG 45M | JANUARY 19, 2024

SYDGEN ENHANCE
GURNEY ENHANCE 3G
GURNEY NEW LASSIE 11E

REMITALL F DECISIOVE 35D
REMITALL F JANESSA 279F
REMITALL F JANESSA 171D

SYDGEN EXCEED 3223
SYDGEN RITA 2618
WR JOURNEY-1X74
BENCHMARK NEW LASSIE 77'15

S A V PIONEER 7301
REMITALL F ELLEGRA 115B
REMITALL H RACHIS 21R
REMITALL F JANESSA 38X

BW	WW	E P D	BW	WW	YW	M	CE
90	680	D	2.2	60	112	30	3

Well-muscled, deep-ribbed herd bull that will provide lots of performance. Dam is a solid producer with great feet and udder. Mix in Enhance genetics and you have the whole package.

**LOT
49**

GURNEY COALITION 64M

2359897 | WCG 64M | JANUARY 29, 2024

U2 COALITION 206C
DWAJO COALITION 79K
DWAJO JESTRESS 119Z

W SUNRISE ELEMENT 134F
GURNEY BETSEY 73H
GURNEY BETSEY54E

HF SYNDICATE 213Z
U2 ERELITE 109Z
DWAJO FINAL DOMINATION 33X
DWAJO JESTRESS 122X

BARTEKS ELEMENT 1028 651
HF BLOSSOM 30D
GURNEY IRON MOUNTAIN40Z
GURNEY BETSEY 106A

BW	WW	E P D	BW	WW	YW	M	CE
79	698	D	-0.4	47	84	26	9

Coalition, Element, and back to our Iron Mountain sire. Loads of maternal value bred into this calving ease specialist. Has a beautiful dam with good feet and an ideal udder structure.





First of 3 bulls from our new walking herd sire Crescent Creek Big Step. He stands on a set of very good feet and legs. Is deep ribbed and thick across his top. His dam is truly amazing, an ideal-looking Angus cow. These qualities have been passed on to his offspring. A true herd boosting and improving herd sire.

LOT 50

GURNEY BIG STEP 68M

2359817 | WCG 68M | JANUARY 31, 2024

CRESCENT CREEK NEXT STEP 4H
CRESCENT CREEK BIG STEP 19K
 CRESCENT CREEK JOAN 7E

CAR NEXT STEP 889
 CRESCENT CREEK ROSEBUD 163D
 CHAPMAN MEMENTO 3589A
 CRESCENT CREEK JOAN 48Y

EBON HILL 462 UPWARD 27'15
GURNEY ROSEBUD 64F
 HF ROSEBUD 164B

EBON HILL UPWARD 462'13
 EBON HILL BEAUTY 7'12
 CN POWER ONE 102
 HF ROSEBUD 231U

BW	WW	E P D	BW	WW	YW	M	CE
87	652		2	49	84	28	4

LOT 51

GURNEY COALITION 69M

2359898 | WCG 69M | FEBRUARY 1, 2024

U2 COALITION 206C
DWAJO COALITION 79K
 DWAJO JESTRESS 119Z

HF SYNDICATE 213Z
 U2 ERELITE 109Z
 DWAJO FINAL DOMINATION 33X
 DWAJO JESTRESS 122X

K C F BENNETTE ASSERIVE
GURNEY BLACKCAP 27J
 EBON HILL BLACKCAP 319'14

K C F BENNETT ABSOLUTE
 K C F MISS HOMESTEAD Z98
 BPF VANCE 213
 EBON HILL BLACKCAP 219'12

BW	WW	E P D	BW	WW	YW	M	CE
91	690		2.6	52	97	27	4

We are very pleased with all our Coalition-sired calves. They're very uniform in their makeup, long-spined, good-footed, and functional cattle.





**LOT
52**

GURNEY BIG STEP 70M

2387815 | WCG 70M | FEBRUARY 1, 2024

CRESCENT CREEK NEXT STEP 4H
CRESCENT CREEK BIG STEP 19K
 CRESCENT CREEK JOAN 7E

CAR NEXT STEP 889
 CRESCENT CREEK ROSEBUD 163D
 CHAPMAN MEMENTO 3589A
 CRESCENT CREEK JOAN 48Y

W SUNRISE ELEMENT 134F
GURNEY LADY TIPTOP 57K
 GURNEY LADY TIPTOP 64G

BARTELS ELEMENT 1028
 HF BLOSSOM 30D
 HF COWBOY'S CREED 236E
 SOUTHERN LADY TIPTOP 14Z

Here's a nice bull out of a first-time mother. Very balanced set of EPDs which say he could be used on larger heifers. Big Step's offspring have averaged 78 lbs for males and 72 lbs for females.

BW	WW	E P D	BW	WW	YW	M	CE
86	708		2.6	55	102	29	4

**LOT
53**

GURNEY COALITION 71M

2384852 | WCG 71M | FEBRUARY 1, 2024

U2 COALITION 206C
DWAJO COALITION 79K
 DWAJO JESTRESS 119Z

HF SYNDICATE 213Z
 U2 ERELITE 109Z
 DWAJO FINAL DOMINATION 33X
 DWAJO JESTRESS 122X

S A V SEEDSTOCK 4838
GURNEY TILDA 11F
 REMINGTON TILDA 8P

S A V REGISTRY 2831
 S A V BLACKCAP MAY 4136
 BON VIEW NEW DESIGN 1407
 WIWA CREEK TILDA 32C



BW	WW	E P D	BW	WW	YW	M	CE
70	605		-1.4	38	70	25	12

Sleeper Bull of the Sale Alert! The last 2 high sellers sold came from this guy's Dam 11F. To Goldrige Colony, and Rock Creek Cattle. She's one of those cows you want to have a whole herd of. Picture perfect udder, great feet, and amazing disposition. He will be a top-notch heifer bull that will leave you with amazing offspring.



Musgrave Stunner, Upward, and U2 Erelite 109Z. With these genetics, the progeny of this bull should produce some females with powerful maternal traits.

LOT 54

GURNEY COALITION 74M

2384855 | WCG 74M | FEBRUARY 4, 2024

U2 COALITION 206C
DWAJO COALITION 79K
 DWAJO JESTRESS 119Z

MUSGRAVE 316 STUNNER
GURNEY BIRD 17H
 GURNEY BIRD 10E

HF SYNDICATE 213Z
 U2 ERELITE 109Z
 DWAJO FINAL DOMINATION 33X
 DWAJO JESTRESS 122X

LD CAPITALIST 316
 MCATL BLACKBIRD 831-1378
 EBON HILL 462 UPWARD 27'25
 GURNEY BIRD 84Z

BW	WW	EPD	BW	WW	YW	M	CE
96	605	D	2.8	44	87	26	1

LOT 55

GURNEY BIG STEP 75M

2384862 | WCG 75M | FEBRUARY 5, 2024

CRESCENT CREEK NEXT STEP 4H
CRESCENT CREEK BIG STEP 19K
 CRESCENT CREEK JOAN 7E

W SUNRISE ELEMENT 134F
GURNEY BEAUTY 76H
 GURNEY BEAUTY 141D

CAR NEXT STEP 889
 CRESCENT CREEK ROSEBUD 163D
 CHAPMAN MEMENTO 3589A
 CRESCENT CREEK JOAN 48Y

BARTELS ELEMENT 1028
 HF BLOSSOM 30D
 EBON HILL UPWARDS 462'13
 EBON HILL BEAUTY 541'12

BW	WW	EPD	BW	WW	YW	M	CE
70	677	D	-1.3	49	85	30	12

This heifer bull is rich in maternal genetics, but wont sacrifice performance either. Youngest bull and birth weight of 70 lbs to 768 lbs weaning weight. Top 4% for calving ease and Top 7% for milk EPD. Looks like a perfect guy for the heifer pen.



**LOT
56**

RED GURNEY RED BEAR 32M

2359428 | WCG 32M | JANUARY 14, 2024

RED MANN RED BOX 55C
RED DUFF RED BEAR 18154
RED CC PANTERA 20A

RED SLGN WIDELOAD 920W
RED PELTON MISS AJA 0839U
STEWART PANTHER 19X
RED CCY SAVANNAH 5U

RED U2 MALBEC 104F
RED GURNEY DUCHESS 38H
RED U2 DUCHESS 607F

RED U2 MALBEC 195D
RED U2 LASS 465A
RED HOWE HESSTON 212C
RED U2 DUCHESS 29D

BW	WW	EPD	BW	WW	YW	M	CE
98	751		3.2	67	113	28	0

Looking for a powerful Red Herd Bull? Well, this guy is a meat machine and will go on to add pounds to your next calf crop. An impressive set of EPDs on this guy. Top 1% for both weaning weight and yearling weight. His dam originates from the great U2 genetics bought from their dispersal a few years ago.



**LOT
57**

RED GURNEY HONCHO 48M

2359883 | WCG 48M | JANUARY 20, 2024

RED FLYING K BOSS 95C
RED WHEEL HONCHO 11J
RED WHEEL AUBURN 19E

RED FLYING K MAX 153Y
RED FLYING K MS. DIADEM 100X
LFE BA LEWIS 3008B
RED WHEEL AUBURN 77B

RED BIEBER CL STOCKMARKET E119
RED GURNEY ECHETA 1J
RED COUNT RIDGE ECHETA 45G

RED PIE STOCKMAN 4051
RED BIEBER CL ADELLE 475C
RED NCJ V-POWER 9D
RED CR EMULY ECHETA 40Y

BW	WW	EPD	BW	WW	YW	M	CE
85	739		0.8	58	104	30	5

We are very pleased with all our Honcho-sired calves, he has left us with very functional females and bulls that will raise the bar in Red Angus circles we believe. This guy stands out in a very good way. Moderate birth weight with explosive power and growth. Heifers or cows the resulting offspring will flat out work for you.





Lots of calving ease bred into this bull from his sire Honcho and his grandsire's Flying K Duke and Flying K Boss. He's built smooth and long for no worry calving with heifers. Top 3% for calving ease.

LOT 58

RED GURNEY HONCHO 50M

2359888 | WCG 50M | JANUARY 22, 2024

RED FLYING K BOSS 95C
RED WHEEL HONCHO 11J
 RED WHEEL AUBURN 19E

RED FLYING K MAX 153Y
 RED FLYING K MS. DIADEM 100X
 LFE BA LEWIS 3008B
 RED WHEEL AUBURN 77B

RED FLYING K DUKE 110G
RED GURNEY ROSETTE 39J
 RED LAURON ROSETTE 21G

RED FLYING K NEPTUNE 170B
 RED FLYING K CHARITY 40D
 RED RSL MOONSHINE MAN 39E
 RED LAURON ROSETTE 21E

BW	WW	EPD	BW	WW	YW	M	CE
73	645	D	-2.4	35	65	27	12

LOT 59

RED GURNEY HONCHO 61M

2359895 | WCG 61M | JANUARY 28, 2024

RED FLYING K BOSS 95C
RED WHEEL HONCHO 11J
 RED WHEEL AUBURN 19E

RED FLYING K MAX 153Y
 RED FLYING K MS. DIADEM 100X
 LFE BA LEWIS 3008B
 RED WHEEL AUBURN 77B

RED COCKBURN PATRIOT 9048
RED TER-RON LAURYN 26J
 RED TER-RON LAURYN 140C

RED T-S PATRIOT 84K
 RED COCKBURN CORA 137Y
 RED TER-RON PARKER 34A
 RED TER-RON LAURYN 190U

BW	WW	EPD	BW	WW	YW	M	CE
87	703	D	2.1	55	100	24	2

A performance bull here with a moderate birth weight of 87 lbs and top 10% or better EPDs for weaning and yearling weights. One of the top performing bulls in the sale offering. Actual weaning weight on Oct. 4th, 2024 of 792 lbs.



Open Replacement Heifer Consignments

**LOT
60**

BMB BREWIN ANGUS

SELECT GROUP OF OPEN RED & BLACK ANGUS COMMERCIAL HEIFERS

Offering approximately 65 Open Red Angus Commercial heifers that will be sorted into smaller groups on sale day with a select few Black Angus Heifers. These heifers are all sired by our herd bulls used in our program. Majority of these females are from purebred angus herd.



**LOT
61**

CHIN COULEE CATTLE COMPANY

Offering Approximately 15 Open Red Angus Commercial Heifers



Larry Penner
Senior Sales Representative

M +1 403 382 7222
E larry.penner@trouwnutrition.com

Trouw Nutrition Canada
1810 - 39 St. North, Lethbridge, AB T1H 5J2

www.trouwnutrition.ca



**POWER
FUELZ**

NEIL WEBSDALE
CEO

403-330-9710 neil@powerfuelz.ca
6003 54 Ave, Taber, AB T1G 1X4



Benji Hill
Utility Sales Consultant
bhil@rockymtn.com

3939 - 1st Avenue South
Lethbridge, AB T1J 4P8
www.rockymtn.com

Main Line **403 327 3154**
Mobile **403 635 0496**

OLS Mineral - "Simply the Best"

Dealer: **Fleming Stock Farms**

Duncan Fleming
Granum, AB
Cell: 403-625-0427
Phone: 403-687-2288
Toll Free: 1-800-565-5288
flemingangus@explornet.com



NEW HOLLAND

Darren Ostenberg
Sales

Vanee

Farm Centre Inc. EMAIL: darreno@vaneefarmcentre.ca

BUS: 403-223-4437
CELL: 403-634-1436

Agriculture

5614 - 64 STREET, TABER, AB T1G 1Y8



INDEPENDENT CROP INPUTS

Bruce Fletcher

Cell: 403-393-6497
Office: 403-223-1325
Email: bruce@icitaber.com

Box 4690
Taber, AB
T1G-2E1

Country Commodities Limited

116 Broxburn Blvd.
Lethbridge, AB T1J 4P4

Cam Bridgeman

Office: 403-320-2622 Cell: 403-330-9675 Fax: 403-320-2663
E-Mail: cam@countrycommodities.com



Blake Fletcher
Crop Advisor
blake.fletcher@simplot.com

Cell: 403-330.9351

Kaden Herbst

AG Sales
O: 403.223.4683
C: 403.380.0123
kaden.herbst@chinookequipment.ca
6001, 50th Ave
Taber, AB T1G 1W7



BMB Brewin Angus
Box 4366
Taber, AB
T1G 2C8

